



High-Performance CAT40/50 Toolholders and Collets

Accupro® toolholders, collets and collet chucks — designed for high performance

Benefits: Accupro® is produced to the tightest tolerances to deliver high-performance results at the spindle. While our toolholders were built to optimize Accupro end mills, drills and taps, they are compatible with other major brands, as well.

CAT V-Flange End Mill Holders and Collet Chucks

- Each toolholder is balanced with a Hofmann Machine, resulting in increased consistency and accuracy, as well as decreased machine spindle and cutting-tool wear
- Shank travers are ground to obtain optimum accuracy
- DIN flange Coolant-Through eliminates the need for a hose to deliver coolant to the cutting-tool tip
- Through-spindle coolant applies the coolant directly to the cutting area without hose connections
- Maximum TIR 0.0002" OD to ID
- Meets or exceeds ANSI specifications
- Each tool comes with an inspection lab certificate certifying its balance and accuracy at the stated RPM
- CAT40 tooling balanced up to 30,000 RPMs; CAT50 tooling balanced up to 25,000 RPMs; both CAT40 tooling and CAT50 tooling are balanced to G6.3



CAT V-Flange
End Mill Holder

Collet Chucks

- Coolant-Through collets apply coolant directly to the cutting area without hose connections and are sealed and pressure-resistance tested
- Both holder and collet nut are balanced
- Manufactured with alloy steel, which has better strength, hardness, toughness, wear and corrosion resistance, and hardenability, as compared to other holders made out of carbon steel
- Available in Single Angle, Double Angle and all ER sizes in both CAT40 and CAT50



CAT V-Flange
Collet Chuck

Precision ER Series Collets

- Manufactured from special elastic steel, which is heat-treated and precision-ground, resulting in precise accuracy, powerful clamping ability and extreme durability
- Can be widely used for boring, milling, drilling and tapping, as well as for grinding operations
- Collapse Range: 1/64" on ER-11 and 1/32" on all other sizes while maintaining full accuracy
- Coolant-Through collets are sealed and pressure-resistance tested to 450 psi
- No discs, plugs or additional hardware required
- Available for CAT40 and CAT50 collet chucks ER-16, ER-20, ER-25, ER-32 and ER-40, and a wide array of collet sets ranging from 7 to 23 pieces



Precision
ER Series Collet

Visit mscdirect.com/accupro for the complete line of Toolholders and Collets

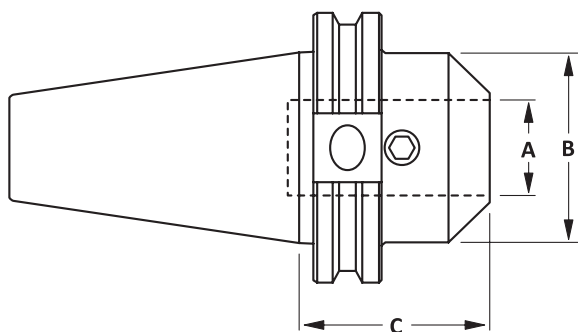
Exclusively Distributed By 



High-Performance CAT40/50 Toolholders and Collets

CAT V-Flange End Mill Holders

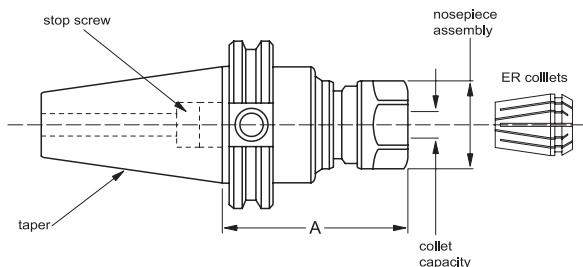
- CAT40 retention knob thread sizes 5/8–11*
- CAT50 retention knob thread sizes 1–8*
- Additional sizes available at mscdirect.com/accupro



Hole Dia. A (In.)	Nose Dia. B (In.)	Projection C (In.)	CAT40	CAT50
			Order #	Order #
1/8	0.63	1.35	80263759	—
	0.75	2.50	80263767	—
	0.75	4.00	80263775	—
1/4	0.79	1.38	80263817	80264179
	0.79	2.50	80263825	80264187
	0.79	4.00	80263833	80264195
1/2	1.38	1.75	80263932	80264344
	1.38	2.50	80263940	—
	1.38	2.63	—	80264351
	1.38	4.00	80263957	80264369
	1.38	5.00	80263965	—
	1.38	6.00	—	80264377
1	2.25	2.00	80264088	—
	2.36	2.00	—	80264526
	2.36	4.00	80264096	80264534
	2.36	6.00	80264104	80264542
1-1/4	2.36	8.00	—	80264559
	2.25	2.00	80264112	—
	2.75	2.00	—	80264567
	2.48	4.00	80264120	80264575
	2.48	6.00	80264146	80264583
2	2.48	8.00	—	80264591
	3.74	3.63	—	80264641
	3.74	5.37	—	80264658
	3.74	8.00	—	80264666
	3.74	10.00	—	80264674

CAT V-Flange Collet Chucks

- Additional sizes available at mscdirect.com/accupro



Taper	Collet Series	Collet Size Range (In.)	Projection A (In.)	Order #	Replacement Collet Nut
					Order #
CAT40	ER-16	0.020–0.433	2.50	80265234	80266653
			3.50	80265242	
			4.00	80265259	
			6.00	80265267	
	ER-32	0.078–0.787	0.75	73449993	80266687
			2.50	80265333	
			3.13	80265341	
			4.00	80265358	
CAT50	ER-16	0.020–0.433	5.00	80265366	80266687
			6.00	80265374	
			4.13	80265432	
			6.00	80265440	
	ER-32	0.078–0.787	8.00	80265457	80266653
			0.75	73449985	
			4.00	80265549	
			6.00	80265556	
			8.00	80265564	

Precision ER Series Collets

- Coolant-Through collets are intended for use with cylindrical shank tools only; no flats. The full length of the cutting tool should be inserted in the collet. Failure to do so may result in coolant leakage.
- Additional sizes available at mscdirect.com/accupro

Size (In.)	Collet Range Min.–Max. (In.)	ER-16	ER-16 Coolant-Through
		Order #	Order #
1/16	0.046–0.063	93248623	—
3/32	0.078–0.094	93248557	—
1/8	0.109–0.125	93248516	—
5/32	0.141–0.156	93248375	70894720
3/16	0.172–0.188	93248391	72480726
7/32	0.188–0.219	93248615	70894779
1/4	0.234–0.250	93248409	72480734
9/32	0.250–0.281	93248227	70894787
5/16	0.281–0.313	93248573	72480742
11/32	0.313–0.349	93248425	70894464
3/8	0.343–0.375	93248383	72480759
13/32	0.375–0.406	93248540	70894506

* Industry standard

Satisfaction guaranteed, call 800.521.9520
or visit mscdirect.com/accupro

2269/0515

Exclusively Distributed By

