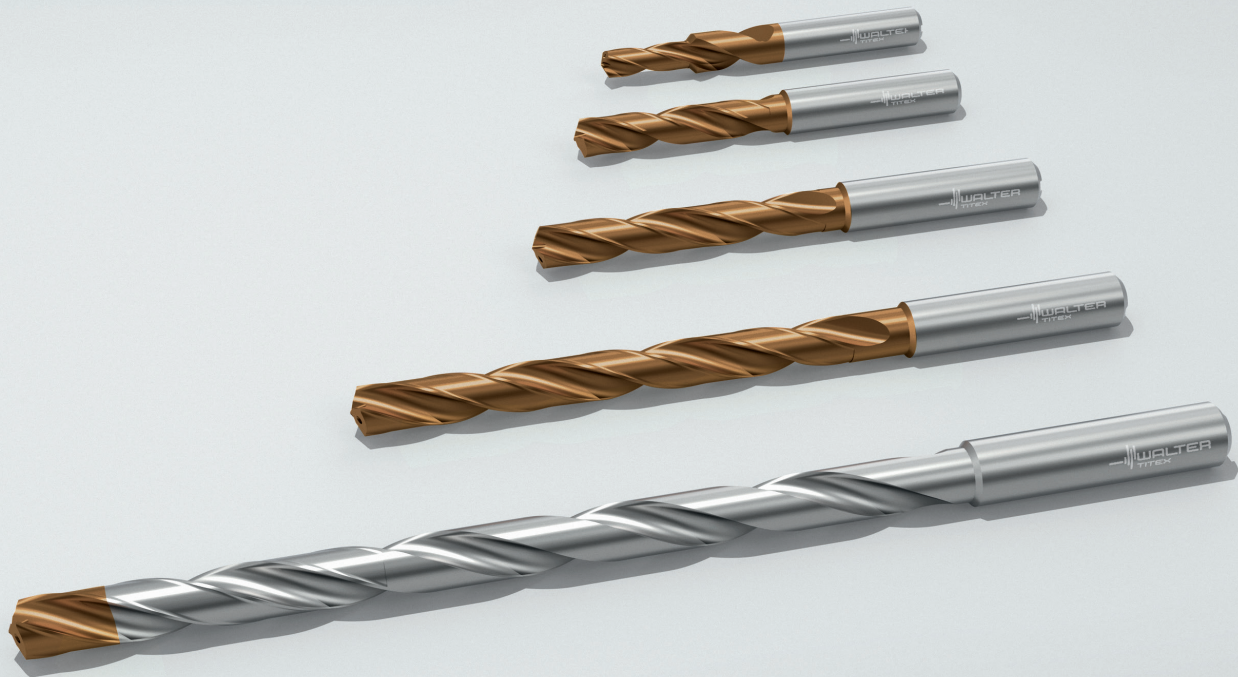


\_DC160 ADVANCE SOLID CARBIDE DRILL

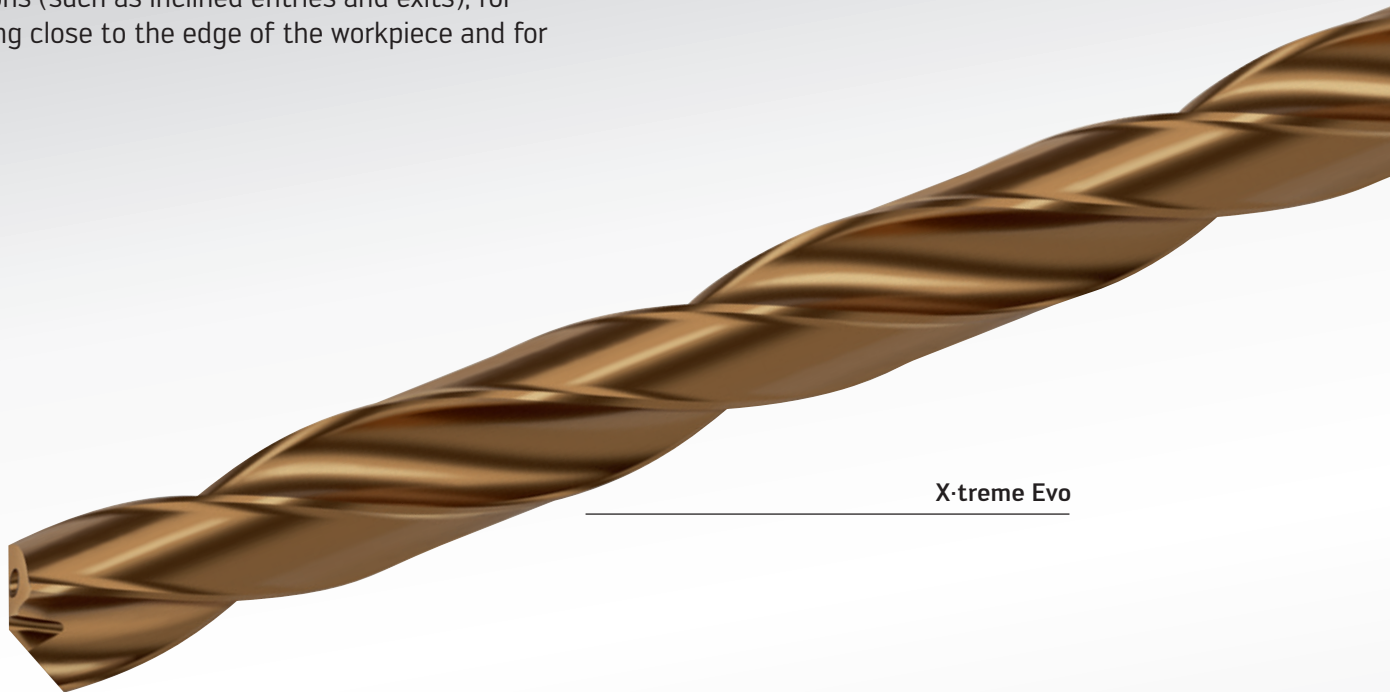
# X·treme Evo – The Next Generation of Drilling.



# YOUR COMPETITIVE ADVANTAGE

Walter is releasing the X-treme Evo from the DC160 Advance product line. This solid carbide drill can be used universally – in all material groups, for a wide variety of applications (such as inclined entries and exits), for drilling close to the edge of the workpiece and for

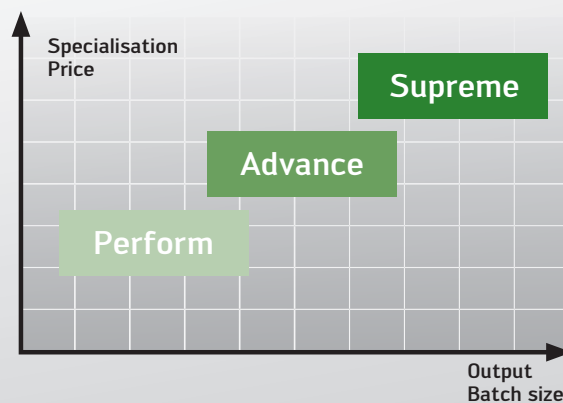
convex and concave surfaces. It can be used on all machine concepts, such as machining centres and transfer lines, or on lathes in both static and driven modes, radial and axial orientation.

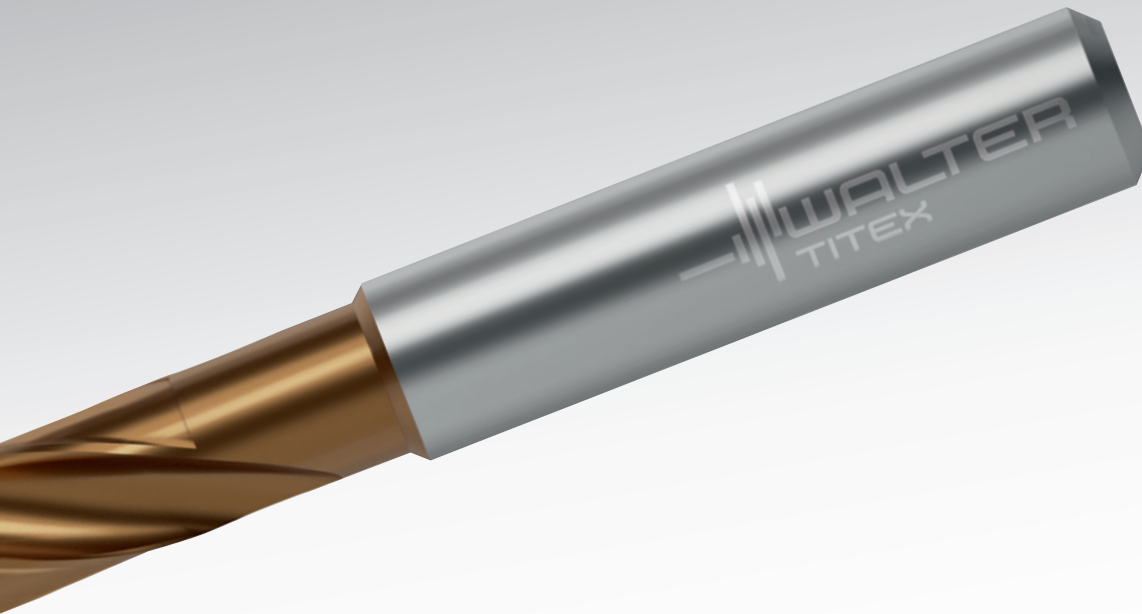


X-treme Evo

## THE WALTER ADVANCE LINE

Are you looking to strike the ideal balance between the most cost-effective production possible and long tool life? Walter Advance line tools exhibit their strengths in the series production of medium-sized batches. Besides the modest investment costs, the key benefits are excellent performance data and a wide range of different models.





**Increased tool life. Increased productivity. Increased process reliability.**

20% longer tool life, 20% higher cutting data: The X-treme Evo from the DC160 Advance product line is a pioneer in many aspects, not just productivity. Improved centring characteristics, thanks to a positive approach angle and quicker guidance,

optimise the component quality. Reduced cutting forces protect the machine. The wide range and their suitability for a great variety of applications mean that DC160 solid carbide drills are of interest to many target groups from different sectors.

## THE BENEFITS FOR YOU AT A GLANCE

---

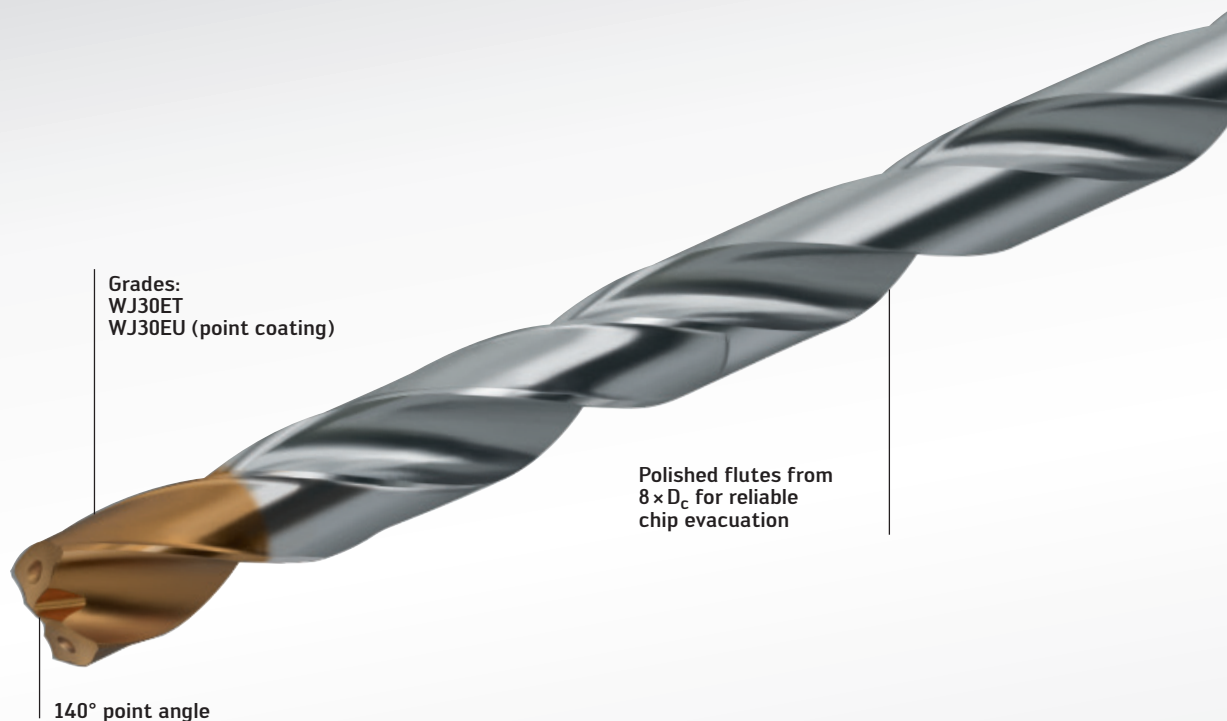
- Outstanding tool life and process reliability at high cutting speeds
- High drilling quality thanks to faster guidance in the drilled hole enabled by a fourth land in an advanced position
- Low feed forces and higher positioning accuracy thanks to the steep approach angle
- Can be used universally for all material groups; suitable for use with emulsion, oil or MQL
- High flexibility for areas of use such as the supply industry or general mechanical engineering thanks to the large range of drills

# MAXIMUM PRECISION AND PROCESS RELIABILITY

**The X-treme Evo is the full package, with a perfect combination of winning features.**

Walter's own extremely wear-resistant WTJ30ET and WJ30EU grades consist of the very tough K30F micrograin substrate plus

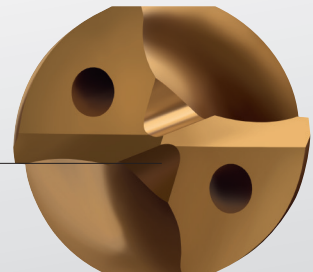
the TiSiAlCrN/AlTiN multi-layer coating. This makes it possible to achieve a long tool life and high cutting values. The advanced fourth land is engaged quickly and consequently optimises drill guidance, particularly for inclined entries and exits.



## FACE & APPROACH

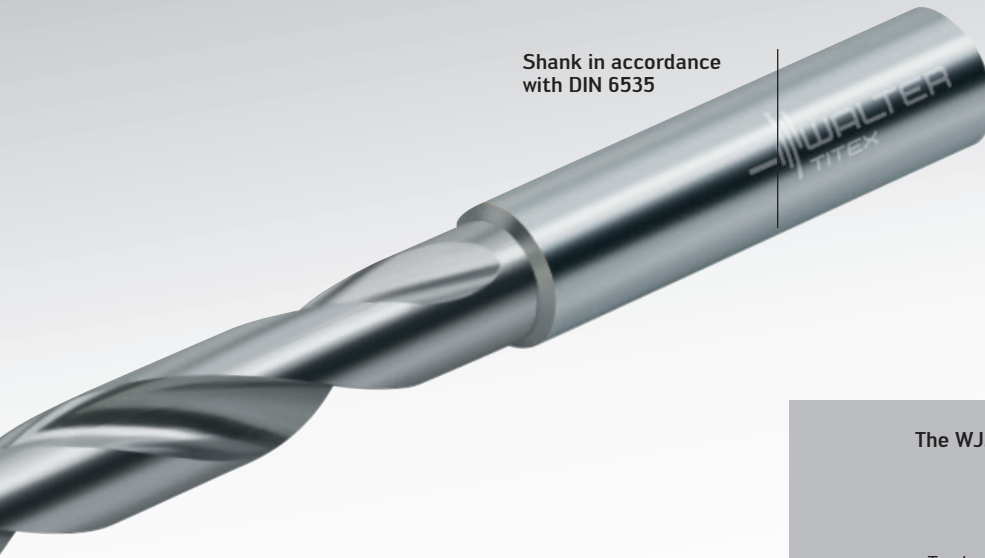
A new type of face geometry creates a large amount of space for chips in the centre and improves chip removal in soft materials in particular. The steep approach angle reduces the feed force and improves the positioning accuracy.

Innovative new positive approach for reduced cutting force

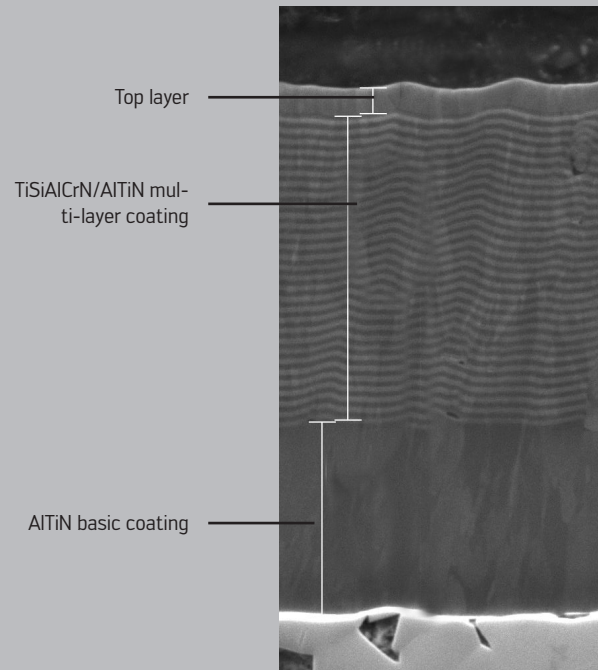


Shank end in accordance with  
DIN 69090

Shank in accordance  
with DIN 6535

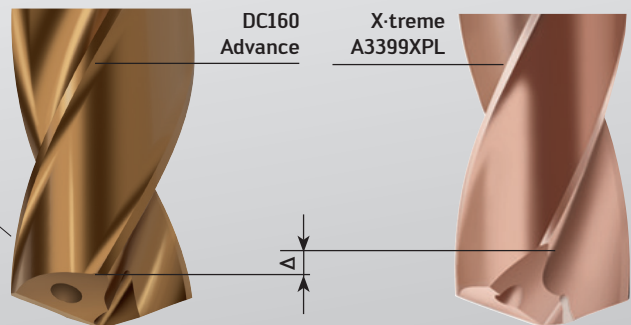
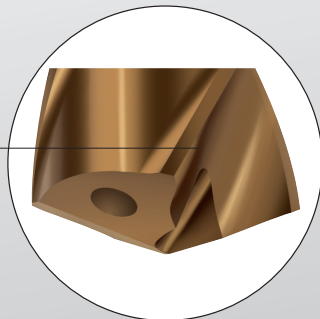


The WJ30ET and WJ30EU grades comprise:



## FOURTH LAND

Fourth land in advanced  
position  
to ensure fast  
guidance in the drilled  
hole



# RANGE OF DRILLS FOR UNIVERSAL USE

Walter is continuously expanding the DC160 Advance product range – currently with three new variants: 3 and 12 × D<sub>c</sub> with internal coolant and 5 × D<sub>c</sub> without internal coolant – in addition to the DC260 Advance chamfer drill

with and without internal coolant for thread/core hole drilling. The whole range covers diameters: 3–20 mm (3 or 8 × D<sub>c</sub> and 12 × D<sub>c</sub>) along with 3–25 mm (5 × D<sub>c</sub>) ensures maximum flexibility during use.

## DC260 Advance chamfer drill

- **NEW** 3 × D<sub>c</sub> with internal coolant, shank type HA and HE
- **NEW** 3 × D<sub>c</sub> without internal coolant, shank type HA and HE

## DC160 Advance twist drill

- **NEW** 3 × D<sub>c</sub> with internal coolant, shank type HA and HE
- 3 × D<sub>c</sub> without internal coolant, shank type HA and HE

## DC160 Advance twist drill

- 5 × D<sub>c</sub> with internal coolant, shank type HA and HE
- **NEW** 5 × D<sub>c</sub> without internal coolant, shank type HA and HE





**DC160 Advance  
twist drill**

- $8 \times D_c$  with internal coolant,  
shank type HA



**DC160 Advance  
twist drill**

- **NEW**  $12 \times D_c$   
with internal coolant, shank  
type HA

Walter USA, LLC

