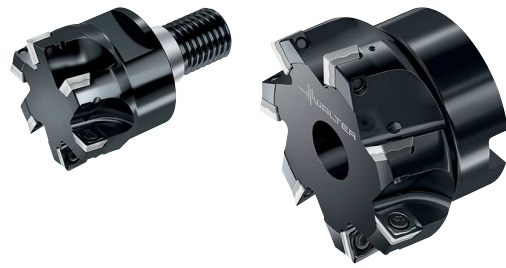


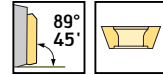
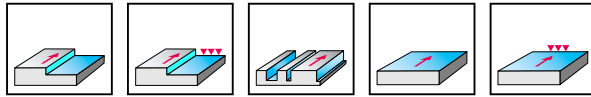
Shoulder milling cutters

M4132 mm



C2

– 4 cutting edges per indexable insert



P	M	K	N	S	H	O
●	●	●	●	●	●	●

Tool	Designation	D _c mm	d ₁ mm	l ₄ mm	L _c mm	l ₁ mm	Z	kg	No. of inserts	Type
ScrewFit 	M4132-016-T14-02-06	16	T14	25	5.6		2	0.04	2	
	M4132-020-T18-02-06	20	T18	30	5.6		2	0.07	2	SD .. 06T2 ..
	M4132-020-T18-03-06	20	T18	30	5.6		3	0.07	3	
	M4132-025-T22-02-09	25	T22	35	8.4		2	0.12	2	SD .. 09T3 ..
	M4132-025-T22-03-06	25	T22	35	5.6		3	0.11	3	SD .. 06T2 ..
	M4132-025-T22-04-06	25	T22	35	5.6		4	0.13	4	
	M4132-032-T28-02-09	32	T28	40	8.4		2	0.22	2	
	M4132-032-T28-03-09	32	T28	40	8.4		3	0.21	3	
	M4132-040-T36-03-09	40	T36	40	8.4		3	0.23	3	SD .. 09T3 ..
	M4132-040-T36-04-09	40	T36	40	8.4		4	0.36	4	
	M4132-050-T45-04-09	50	T45	40	8.4		4	0.37	4	
M4132-050-T45-06-09	50	T45	40	8.4		6	0.37	6		
Weldon shank 	M4132-016-W16-02-06	16	16	31	5.6	80	2	0.12	2	
	M4132-020-W20-02-06	20	20	39	5.6	90	2	0.20	2	SD .. 06T2 ..
	M4132-020-W20-03-06	20	20	39	5.6	90	3	0.20	3	
	M4132-025-W25-02-09	25	25	43	8.4	100	2	0.35	2	SD .. 09T3 ..
	M4132-025-W25-03-06	25	25	43	5.6	100	3	0.35	3	SD .. 06T2 ..
	M4132-025-W25-04-06	25	25	43	5.6	100	4	0.35	4	
	M4132-032-W32-02-09	32	32	49	8.4	110	2	0.61	2	
	M4132-032-W32-03-09	32	32	49	8.4	110	3	0.60	3	
	M4132-040-W40-03-09	40	40	49	8.4	120	3	1.08	3	SD .. 09T3 ..
	M4132-040-W40-04-09	40	40	49	8.4	120	4	1.07	4	
	Shell mill mount DIN 138 transverse keyway 	M4132-040-B16-04-09	40	16	40	8.4		4	0.22	4
M4132-040-B16-05-09		40	16	40	8.4		5	0.22	5	SD .. 09T3 ..
M4132-050-B22-04-09		50	22	40	8.4		4	0.35	4	
M4132-050-B22-04-12		50	22	40	11.6		4	0.26	4	SD .. 1204 ..
M4132-050-B22-05-12		50	22	40	11.6		5	0.29	5	
M4132-050-B22-06-09		50	22	40	8.4		6	0.33	6	SD .. 09T3 ..
M4132-063-B22-05-09		63	22	40	8.4		5	0.55	5	
M4132-063-B22-05-12		63	22	40	11.6		5	0.52	5	SD .. 1204 ..
M4132-063-B22-06-12		63	22	40	11.6		6	0.54	6	
M4132-063-B22-07-09		63	22	40	8.4		7	0.57	7	SD .. 09T3 ..
M4132-080-B27-06-09		80	27	50	8.4		6	1.14	6	
M4132-080-B27-06-12		80	27	50	11.6		6	1.00	6	SD .. 1204 ..
M4132-080-B27-08-09		80	27	50	8.4		8	1.17	8	SD .. 09T3 ..
M4132-080-B27-08-12		80	27	50	11.6		8	1.12	8	
M4132-100-B32-07-12		100	32	50	11.6		7	1.8	7	
M4132-100-B32-09-12		100	32	50	11.6		9	1.83	9	SD .. 1204 ..
M4132-125-B40-08-12	125	40	63	11.6		8	3.37	8		
M4132-125-B40-10-12	125	40	63	11.6		10	3.42	10		

Bodies and assembly parts are included in the scope of delivery

Assembly parts				
Type	SD .. 06T2 ..	SD .. 09T3 ..	SD .. 1204 ..	
Clamping screw for indexable insert Torque	FS2084 (Torx 7IP) 0.9 Nm	FS2266 (Torx 10IP) 2.0 Nm	FS1453 (Torx 15IP) 3.5 Nm	

Accessories				
Type	SD .. 06T2 ..	SD .. 09T3 ..	SD .. 1204 ..	
Torque screwdriver, analogue Torque	FS2001 0.4–1.2 Nm	FS2003 1.5–5.0 Nm	FS2003 1.5–5.0 Nm	
Torque screwdriver, digital Torque		FS2248 1.0–6.0 Nm	FS2248 1.0–6.0 Nm	
Interchangeable blade	FS2011 (Torx 7IP)	FS2268 (Torx 10IP)	FS2014 (Torx 15IP)	
Screwdriver	FS2088 (Torx 7IP)	FS2267 (Torx 10IP)	FS1485 (Torx 15IP)	

C2

Indexable inserts

Designation	r in	b in	P			M			K			N	S			
			HC			HC			HC			HW	HC			
			WKP25S	WKP35G	WKP35S	WSP45S	WSM45X	WSP45S	WAK15	WKK25S	WKP25S	WKP35G	WKP35S	WK10	WSM35S	WSM45X
SDGT06T2PDR-D57	0.016	0.047	☺	☺	☺	☺	☺									
SDGT09T3PDR-D57	0.031	0.047	☺	☺	☺	☺	☺									
SDGT1204PDR-D57	0.031	0.063	☺	☺	☺	☺	☺									
SDHT06T204-G88	0.016											☺				
SDHT09T304-G88	0.016											☺				
SDHT09T308-G88	0.031											☺				
SDHT120408-G88	0.031											☺				
SDMW06T204-A57	0.016		☺	☺	☺					☺	☺	☺				
SDMW09T308-A57	0.031		☺	☺	☺					☺	☺	☺				
SDMW120408-A57	0.031		☺	☺	☺					☺	☺	☺				
SDMT06T204-D51	0.016		☺	☺	☺		☺			☺	☺	☺				☺
SDMT09T308-D51	0.031		☺	☺	☺		☺			☺	☺	☺				☺
SDMT120408-D51	0.031		☺	☺	☺		☺			☺	☺	☺				☺
SDMT06T204-D57	0.016		☺	☺	☺	☺	☺			☺	☺	☺		☺		☺
SDMT09T308-D57	0.031		☺	☺	☺	☺	☺			☺	☺	☺		☺		☺
SDMT120408-D57	0.031		☺	☺	☺	☺	☺			☺	☺	☺		☺		☺
SDMT06T204-F57	0.016		☺	☺	☺	☺	☺	☺		☺	☺	☺		☺		☺
SDMT06T208-F57	0.031		☺	☺	☺	☺	☺			☺	☺	☺		☺		☺
SDMT06T212-F57	0.047		☺	☺	☺	☺	☺			☺	☺	☺		☺		☺
SDMT09T304-F57	0.016		☺	☺	☺	☺	☺			☺	☺	☺		☺		☺
SDMT09T308-F57	0.031		☺	☺	☺	☺	☺	☺		☺	☺	☺		☺		☺
SDMT09T312-F57	0.047		☺	☺	☺	☺	☺			☺	☺	☺		☺		☺
SDMT09T316-F57	0.063		☺	☺	☺	☺	☺			☺	☺	☺		☺		☺
SDMT09T320-F57	0.078		☺	☺	☺	☺	☺			☺	☺	☺		☺		☺
SDMT120408-F57	0.031		☺	☺	☺	☺	☺	☺		☺	☺	☺		☺		☺
SDMT120412-F57	0.047		☺	☺	☺	☺	☺			☺	☺	☺		☺		☺
SDMT120416-F57	0.063		☺	☺	☺	☺	☺			☺	☺	☺		☺		☺
SDMT120420-F57	0.078		☺	☺	☺	☺	☺			☺	☺	☺		☺		☺
SDMT120425-F57	0.098		☺	☺	☺	☺	☺			☺	☺	☺		☺		☺

SD..06T2... : If the corner radius r is greater than 0.016 in, the corner area of the body must be reworked.
 SD..09T3... : If the corner radius r is greater than 0.032 in, the corner area of the body must be reworked.
 SD..1204... : If the corner radius r is greater than 0.032 in, the corner area of the body must be reworked.
 $R_{(body)} = r_{(indexable\ insert)}$

HC = Coated carbide
 HW = Uncoated carbide

WALTER SELECT

Stability of machine, workpiece and clamping arrangement

Very good
 Good
 Moderate

●● Primary application
 ● Additional application

C 337

D 1

C 728

C 751

C 792

ScrewFit C 791

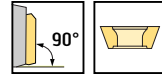
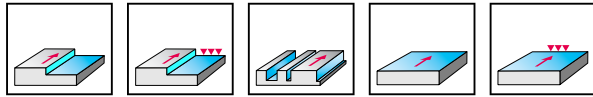
Shoulder milling cutters

M4132 inch



C2

– 4 cutting edges per indexable insert



P	M	K	N	S	H	O
●	●	●	●	●	●	●

Tool	Designation	D _c in	d ₁ in	l ₁ in	l ₄ in	L _c in	Z	lbs	No. of inserts	Type
Weldon shank 	M4132.015-W15-02-06	0.625	0.625	2.851	0.945	0.220	2	0.2	2	SD .. 06T2 ..
	M4132.019-W19-03-06	0.750	0.750	2.976	0.945	0.220	3	0.3	3	
	M4132.026-W26-02-09	1.000	1.000	3.622	1.339	0.331	2	0.1	2	SD .. 09T3 ..
	M4132.031-W31-03-09	1.250	1.250	3.701	1.417	0.331	3	0.1	3	
	M4132.038-W38-04-09	1.500	1.500	4.185	1.496	0.331	4	0.2	4	
Shell mill mount DIN 138 transverse keyway 	M4132.038-B13-05-09	1.500	0.500	1.575	1.575	0.331	5	0.0	5	SD .. 09T3 ..
	M4132.051-B19-06-09	2.000	0.750	1.575	1.575	0.331	6	0.1	6	
	M4132.051-B19-04-12	2.000	0.750	1.500	1.500	0.457	4	0.8	4	SD .. 1204 ..
	M4132.064-B26-07-09	2.500	1.000	1.575	1.575	0.331	7	0.1	7	SD .. 09T3 ..
	M4132.064-B26-05-12	2.500	1.000	1.575	1.575	0.457	5	1.1	5	SD .. 1204 ..
	M4132.076-B26-08-09	3.000	1.000	1.969	1.969	0.331	8	2.3	8	SD .. 09T3 ..
	M4132.076-B26-06-12	3.000	1.000	1.969	1.969	0.457	6	2.0	6	SD .. 1204 ..
	M4132.102-B31-07-12	4.000	1.250	1.969	1.969	0.457	7	3.9	7	
M4132.127-B38-08-12	5.000	1.500	2.480	2.480	0.457	8	8.0	8		

Bodies and assembly parts are included in the scope of delivery

Assembly parts

Type	SD .. 06T2 .. 0.625–0.750	SD .. 09T3 .. 1.000–1.250	SD .. 09T3 .. 1.500	SD .. 09T3 .. 2.000	SD .. 09T3 .. 2.500–3.000	SD .. 1204 .. 2.000–3.000	SD .. 1204 .. 4.000	SD .. 1204 .. 5.000
Clamping screw for indexable insert Torque	FS2084 (Torx 7IP) 8 in lbs	FS2266 (Torx 10IP) 18 in lbs	FS2266 (Torx 10IP) 18 in lbs	FS2266 (Torx 10IP) 18 in lbs	FS2266 (Torx 10IP) 18 in lbs	FS1453 (Torx 15IP) 31 in lbs	FS1453 (Torx 15IP) 31 in lbs	FS1453 (Torx 15IP) 31 in lbs
Clamping screw for arbor-mounted tools			FS1597	FS1523	FS1519	FS1519	FS1339	FS1583

Accessories

Type	SD .. 06T2 ..	SD .. 09T3 ..	SD .. 1204 ..
Torque screwdriver, analogue Torque	FS2001 0.4–1.2 Nm	FS2003 1.5–5.0 Nm	FS2003 1.5–5.0 Nm
Torque screwdriver, digital Torque		FS2248 1.0–6.0 Nm	FS2248 1.0–6.0 Nm
Interchangeable blade	FS2011 (Torx 7IP)	FS2268 (Torx 10IP)	FS2014 (Torx 15IP)
Screwdriver	FS2088 (Torx 7IP)	FS2267 (Torx 10IP)	FS1485 (Torx 15IP)

Indexable inserts

Designation	r in	b in	P				M			K			N	S				
			HC				HC			HC			HW	HC				
			WKP255	WKP356	WKP355	WSP455	WSM355	WSM45X	WSP455	WAK15	WKK255	WKP255	WKP356	WKP355	WK10	WSM355	WSM45X	WSP455
SDGT06T2PDR-D57	0.016	0.047	☺	☺	☺	☺	☺					☺	☺	☺		☺		☺
SDGT09T3PDR-D57	0.031	0.047	☺	☺	☺	☺	☺					☺	☺	☺		☺		☺
SDGT1204PDR-D57	0.031	0.063	☺	☺	☺	☺	☺					☺	☺	☺		☺		☺
SDHT06T204-G88	0.016													☺				
SDHT09T304-G88	0.016													☺				
SDHT09T308-G88	0.031													☺				
SDHT120408-G88	0.031													☺				
SDMW06T204-A57	0.016		☺	☺	☺							☺	☺	☺				
SDMW09T308-A57	0.031		☺	☺	☺							☺	☺	☺				
SDMW120408-A57	0.031		☺	☺	☺							☺	☺	☺				
SDMT06T204-D51	0.016		☺	☺	☺				☺			☺	☺	☺				☺
SDMT09T308-D51	0.031		☺	☺	☺				☺			☺	☺	☺				☺
SDMT120408-D51	0.031		☺	☺	☺				☺			☺	☺	☺				☺
SDMT06T204-D57	0.016		☺	☺	☺				☺			☺	☺	☺				☺
SDMT09T308-D57	0.031		☺	☺	☺				☺			☺	☺	☺				☺
SDMT120408-D57	0.031		☺	☺	☺				☺			☺	☺	☺				☺
SDMT06T204-F57	0.016		☺	☺	☺				☺			☺	☺	☺				☺
SDMT06T208-F57	0.031		☺	☺	☺				☺			☺	☺	☺				☺
SDMT06T212-F57	0.047		☺	☺	☺				☺			☺	☺	☺				☺
SDMT09T304-F57	0.016		☺	☺	☺				☺			☺	☺	☺				☺
SDMT09T308-F57	0.031		☺	☺	☺				☺			☺	☺	☺				☺
SDMT09T312-F57	0.047		☺	☺	☺				☺			☺	☺	☺				☺
SDMT09T316-F57	0.063		☺	☺	☺				☺			☺	☺	☺				☺
SDMT09T320-F57	0.078		☺	☺	☺				☺			☺	☺	☺				☺
SDMT120408-F57	0.031		☺	☺	☺				☺			☺	☺	☺				☺
SDMT120412-F57	0.047		☺	☺	☺				☺			☺	☺	☺				☺
SDMT120416-F57	0.063		☺	☺	☺				☺			☺	☺	☺				☺
SDMT120420-F57	0.078		☺	☺	☺				☺			☺	☺	☺				☺
SDMT120425-F57	0.098		☺	☺	☺				☺			☺	☺	☺				☺

SD..06T2... : If the corner radius r is greater than 0.016 in, the corner area of the body must be reworked.
 SD..09T3... : If the corner radius r is greater than 0.032 in, the corner area of the body must be reworked.
 SD..1204... : If the corner radius r is greater than 0.032 in, the corner area of the body must be reworked.

HC = Coated carbide
 HW = Uncoated carbide

R_(body) = r_(indexable insert)

WALTER SELECT

Stability of machine, workpiece and clamping arrangement

 Very good
 Good
 Moderate

•• Primary application

• Additional application



C2