



WISE FEATURES

- » High clamp force
- » Jaw design minimizes jaw lift
- » Easy center-line adjustment
- » Quick lash adjustment
- » Hex on both ends of screw, can be adjusted from either side
- » 52mm pattern spacing for pull-stud mounting systems
- » End-effector ready for automation integration
- » Max torque 45 foot pounds

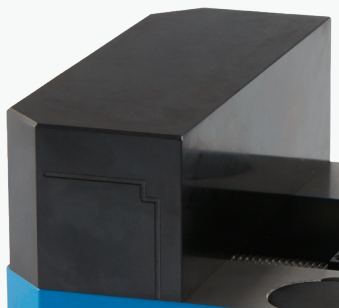
Three new Precision Force 5-axis vises feature robot-ready design and Kurt AngLock® tech for maximum workholding strength and adaptability.

Kurt's Precision Force 5-Axis MaxLock™ vise lineup features 3 models with 3 available jaw options. The PF420, PF440 and PF460 vises come with a standard 4-inch jaw width and jaw openings ranging from 2.625 to 6.625 inches. Patented AngLock® design pushes vise jaws down and forward for greater surface contact on parts—maximizing holding strength with less clamp force.

The Robot-ready PF-series vise design offer user-friendly features including easy-to-adjust lash and 52 mm spacing for pull-stud mounting systems. New Quick Centerline Adjustment is accessed from the top of the vise and allows fast and efficient adjustments to keep parts perfectly positioned without removing the vise from a machine. Spring-loaded gibs keep parts square and maximize part-positioning repeatability through multiple cycles.



Dovetail



Machinable



Serrated

JAW FEATURES

- » Movable jaw options: Machinable, Dovetail and Serrated
- » Jaws and nuts can be reversed for ID clamping
- » Nuts are gibbed to help with squareness

In stock and ready to ship. Order today.
800.645.7270 | mscdirect.com/kurt

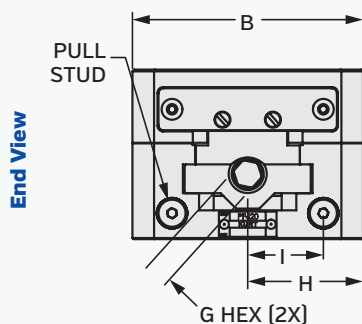
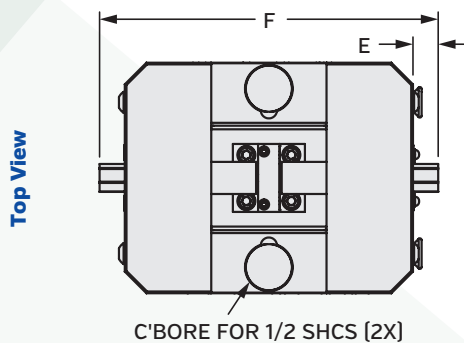
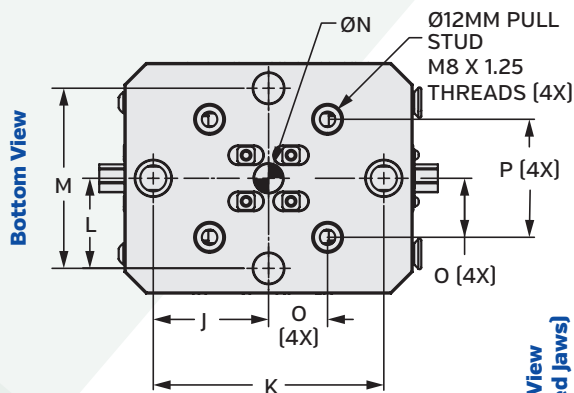
Available
Today At

MSC

 **KURT**
WORKHOLDING

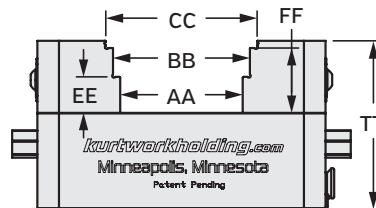
Precision Force MaxLock™ 5-Axis Vises

TECHNICAL SPECIFICATIONS



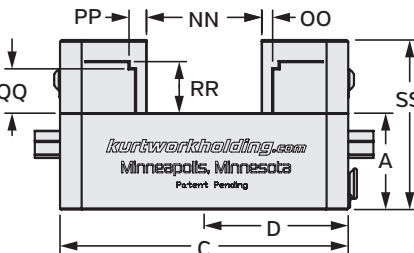
Torque (ft-lbs)	Clamp Force (lbs)
10	600
20	1,200
30	1,900
40	2,500
45	3,300

Side View
(Serrated jaws)



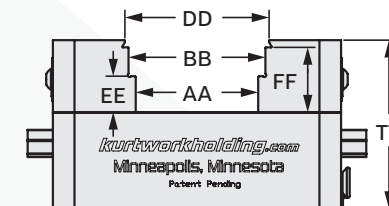
Serrated models:
PF420S, PF440S, PF460S

Side View
(Carvable jaws)



Carvable models:
PF420C, PF440C, PF460C

Side View
(Dovetail jaws)



Dovetail models:
PF420D, PF440D, PF460D

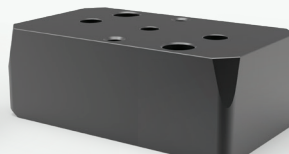
	PF420	PF440	PF460
A	1.672	1.672	1.672
B	4.000	4.000	4.000
C	5.000	7.000	9.000
D	2.500	3.500	4.500
E	0.438	0.438	0.438
F	5.875	7.875	9.875
G	7/16	7/16	7/16
H	2.000	2.000	2.000
I	1.313	1.313	1.313
J	2.000	2.000	2.000
K	4.000	4.000	4.000
L	1.563	1.563	1.563
M	3.125	3.125	3.125
N	0.500	0.500	0.500
O	1.024	1.024	1.024
P	52mm	52mm	52mm
AA	2.125	4.125	6.125
BB	2.375	4.375	6.375
CC	2.625	4.625	6.625
DD	2.501	4.50	6.501
EE	0.625	0.625	0.625
FF	1.125	1.125	1.125
NN	2.000	4.000	6.000
OO	0.190	0.190	0.190
PP	0.303	0.303	0.303
QQ	0.770	0.770	0.770
RR	0.885	0.885	0.885
SS	2.942	2.942	2.942
TT	2.922	2.922	2.922

Precision Force Optional Riser Blocks

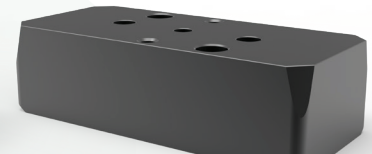
Designed for use with PF-Series Vises, each vise riser kit includes a base and all the accessories needed for installation.



HP420 Riser Kit



HP440 Riser Kit



HP460 Riser Kit

012623

Call MSC today to learn about the latest KURT solutions.
800.645.7270 | mscdirect.com/kurt

Available
Today At

MSC

KURT
WORKHOLDING