



*Protecting you for  
life's best moments.®*

**PRODUCT CATALOG**  
**EDITION 5.2**



Protecting you for life's best moments.



## OUR STORY

**We are the respiratory protection specialists, dedicated to protecting you for life's best moments through creating the world's best respirators.**

Protecting people drives everything we do at RPB. For over four decades, we have serviced the industrial market, working with world leading engineers, constantly pushing creative boundaries with new technology that advances our functional capabilities, seeking input from our end users, and refining our range to create the world's best respirators.

As our passion for protecting people continues to grow, we have extended our product range, branching into new industries to share our respiratory protection expertise to better the lives of more people. We are excited and privileged to now be embarking on a new frontier in respiratory protection that includes Healthcare and Life Sciences industries.

Join RPB, as we continue to shape the future of respiratory protection.



## GLOBAL NETWORK

RPB\* has a global network of distributors serviced from our Michigan Head Office and a satellite office in New Zealand.

Contact us on **1-866-494-4599 (USA)**, **+1 (248) 591 4000 (International)** or visit [rpbsafety.com](http://rpbsafety.com).

Copyright ©2021 RPB IP, LLC. All rights reserved. All materials contained in this publication are protected by United States copyright law and may not be reproduced, distributed, transmitted, displayed, published or broadcast without the prior written permission of RPB IP, LLC. You may not alter or remove any trademark, copyright or other notice from copies of the content.

All trademarks, service marks, and logos used in this publication, both registered and unregistered, are the trademarks, service marks, or logos of their respective owners. The green and gray color combination is a registered trademark of RPB IP, LLC. All rights in the RPB Intellectual Property contained in this publication, including copyright, trademarks, service marks, trade secret, and patent rights are reserved. RPB Intellectual Property means any patent, patented articles, patent applications, designs, industrial designs, copyrights, software, source code, database rights, moral rights, inventions, techniques, technical data, trade secrets, know-how, brands, trademarks, trade names, slogans, logos, and any other common law and proprietary rights, whether registered or unregistered anywhere in the world, that are owned by, developed in whole or in part by, or licensed by RPB IP, LLC.

Tychem®, Nomex®, DuPont® and Kevlar® are registered trademarks of E.I. du Pont de Nemours and Company or its affiliates.

While the Information contained within this catalog is considered to be true and correct at the date of publication, changes in circumstances after the time of publication may impact on the accuracy of the Information. The Information may change without notice and RPB IP LLC is not in any way liable for the accuracy of any information printed and stored or in any way interpreted and used by a user.

# CONTENTS



Protecting you for life's best moments.



## RESPIRATORS

- 6** Z-Link®
- 28** Link Accessories
- 36** Z4®
- 48** Z3™
- 58** Nova 3®
- 70** Nova 3® Talk™
- 76** L4™ Light
- 84** Nova 2000®
- 94** Nova 2000® Talk™
- 100** Astro™
- 110** T-Link®
- 122** T200™
- 132** T150™ Series

## AIR MONITORING FILTRATION AND SUPPLY

- 142** PX5® PAPR
- 152** HX5™ PAPR
- 162** GX4® Gas Monitor
- 172** Radex® Airline Filter
- 186** Radex® Ambient Air Pump
- 188** Air Supply
- 192** C40™ Climate Control Device
- 200** Flow Control

## SAFETY ESSENTIALS

- 212** Blast Suit
- 218** Leather Gloves
- 218** Knee Pads
- 219** Do-rag
- 219** Head Sock
- 219** Quiet-Slim™ Earmuffs

## PARTS INDEX

- 228** Full Parts Index

# RESPIRATORS

**Z-LINK®**

**MULTI-PURPOSE  
RESPIRATORY PROTECTION**



*Protecting you for life's best moments.*



## MULTI-PURPOSE RESPIRATORY PROTECTION

The RPB Z-Link is the most versatile multi-purpose respirator on the market. Designed to be resilient in harsh industrial applications while practical to meet the demands of healthcare and life science settings. The Z-Link has been designed with your comfort and functionality in mind, ensuring no matter where you're working, you'll be protected for your life's best moments.

Visibility has been at the forefront of the Z-Link's design, boasting a large visor that enables you to see with exceptional downward and peripheral vision. This system also combines with a visor that hinges open so you can easily communicate with your team, as and when necessary.

Fitted with a padded headliner and head suspension system, the Z-link's weight is evenly distributed, relieving you of aches and strains on your neck to enhance your experience of comfort. Being fully adjustable ensures the respirator fits securely to all head sizes, maximizing stability and always moving with your head. Our innovative design ensures you have a greater range of movement, so you can focus on your job at hand. The Z-Link is everything you need in a respirator.

The Z-Link is certified to the standards below:



PAPR & SAR Type C

CE 2797

EN14594:2005 3B  
EN12941:1998  
+A2:2008 TH3/Z/1 P R SL  
RESPIRATORY PROTECTION  
See instruction manual for protection levels.

EN352-3:2002  
HEARING PROTECTION  
Only in conjunction with 10-533 earmuffs.

EN397:2012+A1:2012  
HARD HAT PROTECTION

EN166:2001 CLASS 1 BT 9 3  
EYE & FACE PROTECTION



BSI Certified Product  
AS/NZS 1716:2012  
BMP# 714303  
RESPIRATORY PROTECTION

AS/NZS 1801:1997  
BMP# 714306  
HARD HAT PROTECTION  
Not all configurations conform to this standard.  
Please visit [rpb-safety.com](http://rpb-safety.com) for more details.

AS/NZS 1337.1:2010  
BMP# 714304  
EYE & FACE PROTECTION



Certified Model  
Modèle certifié  
CSA Z94.3-15  
EYE & FACE PROTECTION  
Class 7D Respirator  
Facepiece  
PROTECTION DES YEUX  
ET DU VISAGE  
Masque respiratoire classe 7D

Optimum vision and high velocity impact protection with large optically-clear safety lens (replaceable spare part). Choice of 5 anti-fog and scratch resistant ANSI Z87+ (EN166) lenses: Premium Clear, Green Tint (Shade 5), Yellow Tint, Black Tint, and Mirror Tint.

Air flow and distribution is fully adjustable with the air deflector system to suit your personal preference.

Visor hinges open for easy communication with team (outside of respiratory hazards).

ANSI Z89.1 certified head protection (EN397).

Padded interior with adjustable ratchet system ensures a perfect customized fit that supports movement, increasing comfort and productivity.

Three cape materials available:  
Tychem® 2000,  
Tychem® 4000  
or Zytex® FR.

Fixed jaw ensures secure cape attachment.

Vision-Link™ light mount point.



From local and globally sourced components.

Visor shown open for marketing purposes only. Do not open your visor in the work environment.

### SUPERIOR COMFORT

The fully adjustable Comfort-Link™ fit system allows for total control of your sizing through supportive padding and the adjustable 360 degree head band and ratchet system.



# Z-LINK+®



## DIVERSE FUNCTIONALITY

The Z-Link+ has been designed to give you all the freedom and comfort that you receive with the Z-Link but extends the respirators capabilities, giving you eye protection so you can weld without the need for additional systems.

The Z-Link+ weld visor clips on directly to your main visor so you can seamlessly weld with optically clear vision, then lift up the visor to check welds and instantly begin grinding again. With the large RPB ADF lens with a 1.1.1 optical quality rating, this guarantees uniform shading and distortion free vision, while allowing you to work safely and more comfortably for longer across different angles.

In addition to the Z-Link certifications, the Z-Link+ is certified to the standards below:



**S3.19**  
HEARING PROTECTION  
Only in conjunction with 18-533 earmuffs.

**Z89.1**  
HARD HAT PROTECTION  
Type 1 Class G

**Z87+**  
EYE & FACE PROTECTION

**Z87W**  
WELDING EYE PROTECTION

**CE 2797**

EN14594:2005 3B  
EN12941:1998  
+A2:2008 TH3/2/1 P R SL  
RESPIRATORY PROTECTION  
See instruction manual for protection levels.

EN352-3:2002  
HEARING PROTECTION  
Only in conjunction with 18-533 earmuffs.

EN397:2012+A1:2012  
HARD HAT PROTECTION

EN166:2001 CLASS 1 BT 9 3  
EYE & FACE PROTECTION

EN379:2003  
WELDING EYE PROTECTION



BSI Certified Product  
AS/NZS 1716:2012  
BMP# 714303  
RESPIRATORY PROTECTION

AS/NZS 1801:1997  
BMP# 714306  
HARD HAT PROTECTION  
Not all configurations conform to this standard.  
Please visit [rpbsafety.com](http://rpbsafety.com) for more details.

AS/NZS 1337:2010  
BMP# 714304  
EYE & FACE PROTECTION

AS/NZS 1338.1:2012  
BMP# 714305  
WELDING EYE PROTECTION



Certified Model  
Modèle certifié

CSA Z94.3-15  
EYE & FACE PROTECTION  
Class 7D Respirator

Facepiece  
PROTECTION DES YEUX  
ET DU VISAGE

Masque respiratoire classe 7D

ISO9001  
CERTIFIED COMPANY

The weld visor can be easily removed for extended periods where just grinding is required.

The Z-Link+ weld visor weighs only 13.8 ounces (390g) including ADF.

Large welding auto darkening filter with a 1.1.1 rating. Variable auto darkening lens (shades 3, 5, or 9-13). Replaceable impact and ADF lenses for ease of maintenance.

Z-Link+ weld visor attaches directly onto to the main grinding visor, enabling you to seamlessly switch from welding to grinding while maintaining respiratory protection.



From local and globally sourced components.



Z-LINK+® | RESPIRATORS

RESPIRATORS | Z-LINK+®

### REMOVABLE WELDING VISOR

The Z-Link+ weld visor clips directly onto your main visor, enabling you to lift up your visor to check welds and to instantly begin grinding. For extended periods of grinding the visor is easily removed at the hinge points.



1-866-494-4599 | [rpbsafety.com](http://rpbsafety.com)

# Z-LINK® RADIANT HEAT



## HEAT DEFENSE

The RPB Radiant Heat kit transforms your Z-Link respirator into a complete protective system for high heat environments. Utilizing the Z-Link headtop, experience unrivaled comfort as heat is deflected away from you and air continuously circulates throughout the headtop so you can work safer for longer.

The Radiant Heat kit features a large, gold coated visor that reflects heat off you, keeping your body temperature down, while allowing you to see all of your environment with an uncompromised field of view. With flame resistant and reflective materials this protects you from sparks and splashes while providing additional relief from the heat.

Enhance your experience of safety and productivity in high heat environments by using protection that revolutionizes the way you work with the RPB Z-Link Radiant Heat.

The Z-Link Radiant Heat is certified to the standards below.



PAPR & SAR Type C



S3.19 HEARING PROTECTION  
Only in conjunction with 18-533 earmuffs.

Z89.1 HARD HAT PROTECTION  
Type 1 Class G

Z87+ EYE & FACE PROTECTION

CE 2797

EN14594:2005 3B  
EN12941:1998  
+A2:2008 TH3/2/1 P R SL  
RESPIRATORY PROTECTION  
See instruction manual for protection levels.

EN352-3:2002  
HEARING PROTECTION  
Only in conjunction with 18-533 earmuffs.

EN397:2012+A1:2012  
HARD HAT PROTECTION

EN166:2001 CLASS 1 BT 9 3  
EYE & FACE PROTECTION



BSI Certified Product  
AS/NZS 1716:2012  
BMP# 714303  
RESPIRATORY PROTECTION

AS/NZS 1801:1997  
BMP# 714306  
HARD HAT PROTECTION  
Not all configurations conform to this standard.  
Please visit rpbsafety.com for more details.

AS/NZS 1337.1:2010  
BMP# 714304  
EYE & FACE PROTECTION



Certified Model  
Modèle certifié

CSA Z94.3-15  
EYE & FACE PROTECTION  
Class 7D Respirator

Facepiece  
PROTECTION DES YEUX  
ET DU VISAGE  
Masque respiratoire classe 7D

Gold coated visor reflects radiant heat, minimizing heat transfer for increased comfort while ensuring eye protection. Visor options include anti-scratch gold coated (pictured), anti-scratch IR5 gold coated, and IR5.

Large visor lift tab enables users to easily raise and lower the visor while wearing gloves.

Air flow is dispersed throughout your breathe zone, as well as over the head, neck, and body to aid in cooling.

Integrated hard hat protection.

The Aluminized fabric is flame resistant and protects the skin from sparks, splashes and radiant heat. Manufactured from Newtex Z-Flex O-310 Aluminized FR O-PAN/Aramid fabric.

Clip-on visor requires no tools for easy detachment and replacement.

Secured cape ensures the hood moves with you for a greater range of movement.

Aluminized breathing tube cover available to increase the life of the breathing tube.



\*From local and globally sourced components.

ISO9001  
CERTIFIED COMPANY

RESPIRATORS | Z-LINK® RADIANT HEAT

### HEAT REFLECTION

The gold coated visor reflects radiant heat away from you, minimizing heat transfer while ensuring your eyes are protected.



1-866-494-4599 | rpbsafety.com



# Z-LINK® PACKAGES

Z-LINK® - PACKAGES | RESPIRATORS



Z-LINK®  
 Safety Lens  
 Tychem® 2000 Face Seal  
 PX5® PAPR  
 PX5® Breathing Tube  
 Part # 16-018-12



RESPIRATORS | Z-LINK® - PACKAGES

For more information please visit [rpb.com/z-link](http://rpb.com/z-link)  
 Other packages include:

- |  |  |  |   |   |  |
|--|--|--|---|---|--|
| <p>HX5® PAPR</p>  | <p>C40® Climate Control Device</p>  | <p>Constant Flow Valve</p>  | <p>Cape Options</p>  | <p>Gas Cartridge/Filter</p>  | <p>Backpack Assembly</p>  |
|--|--|--|---|---|--|

# Z-LINK® PACKAGES

Z-LINK+®  
 Safety Lens  
 Z-Link® Weld Visor  
 Zytec® FR Shoulder Cape  
 PX5® PAPR  
 PX5® Breathing Tube  
 Spark Arrestor  
**Part # 16-078-21-FR**



Z-LINK® RADIANT HEAT KIT  
 Radiant Heat™ Gold Visor  
 Aluminized Shoulder Cape, Top Cover,  
 Rear Cover and Breathing Tube Cover  
 PX5® PAPR  
 PX5® Breathing Tube  
**Part # 16-018-24-GT**



For more package options please visit [rpbsafety.com/z-link-plus](https://rpbsafety.com/z-link-plus)  
 Other packages include:



For more package options please visit [rpbsafety.com/z-link-radiant-heat](https://rpbsafety.com/z-link-radiant-heat)  
 Other packages include:



# Z-LINK® PARTS

Fit System  
(includes 16-520-S, 16-521, 16-522,  
16-525, 16-526, 16-530 and 16-531)  
Part # 16-520-T



Comfort Pad  
Part # 16-522



Brow Pad  
Part # 16-526



Side Padding System  
Part # 16-520-S



Side Padding Frames  
Part # 16-527



Visor  
(includes 16-612, 16-613, 16-614,  
16-615, FS-04 and FS-17)  
Part # 16-611



Jaw Assembly  
(includes screws and 16-515)  
Part # 16-514



Impact Absorber  
Part # 16-521



Ratchet Assembly  
Part # 16-530



Foam Side Pads  
Part # 16-528



Head Harness  
(includes 16-530)  
Part # 16-531



Head Harness System  
Bracket and Air Deflector  
Part # 16-525



# Z-LINK® PARTS

SAR Breathing Tube Hose Washer  
(pk 5)  
Part # NV2023



FR Breathing Tube Cover  
(Breathing Tube not included)  
Part # 04-854  
Short FR Breathing Tube Cover  
(Breathing Tube not included)  
Part # 04-874



Tychem® Breathing Tube Cover  
(Breathing Tube not included)  
Part # 04-852  
Short Tychem® Breathing Tube  
(Breathing Tube not included)  
Part # 04-872



SAR Breathing Tube  
Part # 04-833  
(previously 04-830)



PX5® Breathing Tube  
Part # 04-831



Short Breathing Tube  
for Backpack Assembly  
Part # 04-841



Lens Seal  
Part # 16-515



Magnifying Lens Holder  
Part # 16-875



Rear Cape Clip  
Part # 16-518



Earmuff Bracket  
(pair, includes screws)  
Part # 16-516



Air Inlet Adapter  
Part # 16-519



Low Flow Indicator  
Part # 16-930

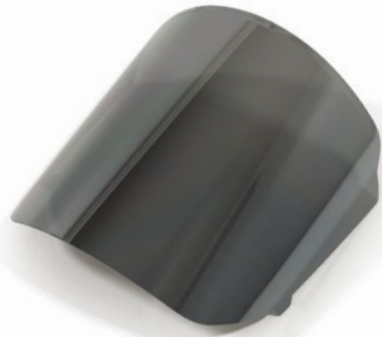


Z-Link Pivot Assembly  
(includes 16-614, 16-516,  
2pcs 16-615, FS-04 and 2pcs FS-17)  
Part # 16-616



# Z-LINK® PARTS

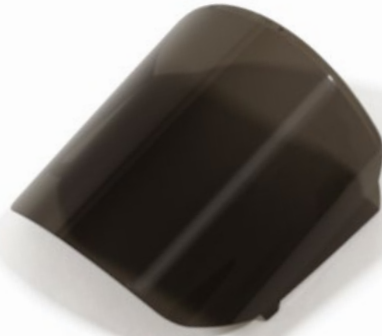
Safety Lens - Mirror Tinted  
Anti Fog  
Part # 16-810-MT



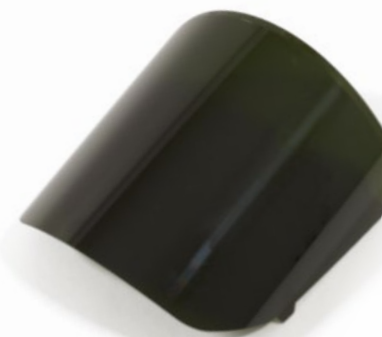
Safety Lens  
Anti Fog/Anti Scratch  
Part # 16-810



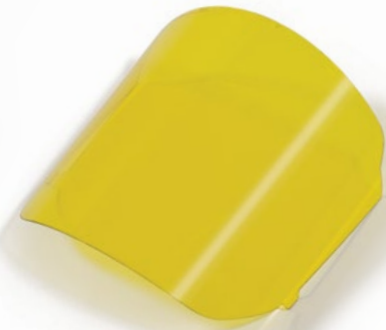
Safety Lens - Smoke Tinted  
Anti Fog/Anti Scratch  
Part # 16-810-ST



Safety Lens - Infrared (shade 5)  
Part # 16-810-IR5



Safety Lens - Yellow Tinted  
Anti Fog/Anti Scratch  
Part # 16-810-YT



Tear-off Lens (pk 50)  
Part # 16-811



Welding Impact Lens (pk 10)  
Part # 16-872



ADF Impact Lens  
- Aluminum Coated (pk 10)  
Part # 16-872-AL



Protective Lens for ADF Impact Lens  
- Aluminum Coated (pk 10)  
Part # 16-874



ADF Rear Lens (pk 10)  
Part # 16-873



Ultra Magnifying Lens  
(available in 1.0, 1.5, 2.0 and 2.5)  
Part # 13-072- (1, 1.5, 2 or 2.5)



Rear Protective Lens for  
Fixed Shade Lens (pk 10)  
Part # 16-878



Fixed Welding Lens Frame  
Part # 16-877



Fixed Shade Welding Lens  
(available in 5, 8, 9, 10, 11 and 12)  
Part # 16-877- (5, 8, 9, 10, 11 or 12)



Weld Visor with Fixed Lens Frame  
(includes 16-674, 16-877 and  
16-672, ADF lens not included)  
Part # 16-676



Z-LINK® - PARTS | 2 | RESPIRATORS

Z-LINK® - PARTS | 2 | RESPIRATORS

## Z-LINK® PARTS

Welding Visor  
(includes 16-674, 16-673 and  
16-672, ADF lens not included)  
Part # 16-671



Welding Visor Frame  
Part # 16-674



Welding Lens Retainer  
Part # 16-672



RPB® ADF Lens  
Part # 16-871



Welding Visor with ADF Lens  
Part # 16-670



Weld Visor Attachment Clips  
Part # 16-673



## Z-LINK® ADF LENS

### OPEN STATE

#### RPB OCV COLOR DEFINITION

The OCV Filter range offers superior color definition in both the open and activated state, allowing you to clearly see LED displays on machines and equipment, as well as heat definition on the actual weld.



### CLOSED STATE

#### RPB OCV OPTICAL QUALITY

The OCV filter boasts a 1.11 optical quality rating. This means a clear view from a wider range of angles, reducing eye fatigue and increasing your productivity.



### 40% MORE VIEWING WITH THE RPB® OCV ULTRA ADF (110X110)

- Viewing Area: 10.35 square inches (2.66" x 3.89")
- Light state: Shade 3. Dark state: Selectable shades 9-13
- Fast, reliable switching speed: 0.1ms at 73°F / 23°C
- Optional auto delay function from dark to light (0.15 to 1 seconds)
- Weight (ADF only): 4.59 oz / 130g
- Temperature range: -4°F to 122°F / -20°C to +50°C
- 3 year warranty
- 2 Sensors, plus additional Ambient Light Sensor
- Sensitivity and optional delay adjustment on case
- Highest quality wide view ADF available
- Constant UV/IR protection
- Adapts to standard magnifying lens
- 1.11 DIN Rating
- Suitable for all types of electro-arc welding, including covered electrodes, MIG/MAG, TIG/WIG, plasma welding and cutting.  
**NOT FOR LASER OR GAS WELDING.**



# Z-LINK® PARTS

Radiant Heat Gold Visor  
(includes cover clip and retainer assembly)  
Gold - Anti-Scratch **Part # 16-675-GT**  
Gold IR5 - Anti-Scratch **Part # 16-675-GTIR5**  
IR5 **Part # 16-675-IR5**



Aluminized Breathing Tube Cover  
(Breathing Tube not included)  
**Part # 04-855**  
Short Aluminized Breathing Tube  
Cover (Breathing Tube not included)  
**Part # 04-875**



Aluminized Rear Cover  
**Part # 16-754**



Aluminized Top Cover  
**Part # 16-744**



Zytec® FR Face Seal  
**Part # 16-711**



Zytec® FR Shoulder Cape  
**Part # 16-721**



Zytec® FR Chin Seal  
**Part # 16-731**



Tychem® 4000 Shoulder Cape  
**Part # 16-723**



Tychem® 2000 Face Seal  
**Part # 16-712**



Aluminized Shoulder Cape  
**Part # 16-724**



## LINK ACCESSORIES

ENHANCE YOUR Z-LINK®,  
T-LINK® & Z4® EXPERIENCE



*Protecting you for life's best moments.*

# COMMS-LINK™ PARTS

Available for Z-Link®, T-Link® and Z4®

Motorola Connection Cable  
(multi-pin)  
Part # 09-931



Motorola Connection Cable  
(two-pin)  
Part # 09-930



Motorola Connection Cable  
(multi-pin)  
Part # 09-932



Kenwood Connection Cable  
(two-pin)  
Part # 09-933



Motorola Connection Cable  
(multi-pin)  
Part # 09-934



Motorola Connection Cable  
(single-pin)  
Part # 09-935



Communication System  
(includes 16-529 and 09-913)  
(Comms-Link™ System requires 16-520-S)  
Part # 16-922



Push to Talk Button  
Part # 09-913



Communication Retainer Clip  
Part # 16-529



COMMS-LINK™ - PARTS | RESPIRATORS

RESPIRATORS | COMMS-LINK™ - PARTS

# VISION-LINK™ PARTS

Available for Z-Link®, T-Link® and Z4®

Vision-Link™ Light Kit  
(includes 09-510-RAW, 16-918 and 15-839)  
Part # 16-901



Latch Lever  
Part # 16-919



Latch Lever Assembly  
(includes 16-919)  
Part # 16-926



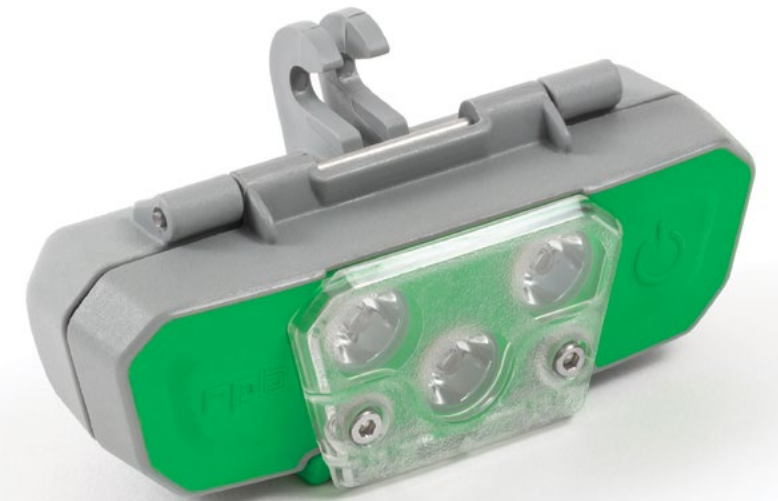
Jaw Mount  
(for T-Link®, includes screws)  
Part # 16-918



Jaw Mount  
(for Z-Link® and Z4®,  
screw not included)  
Part # 15-839



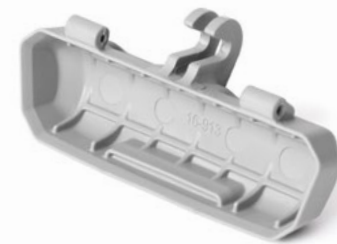
Vision-Link™ Light  
(Battery and Battery Charger not included)  
Part # 16-910



Cowling Seal  
Part # 16-915



Rear Cowling  
Part # 16-913



Latch  
Part # 16-917



Hinge Pin  
Part # 16-923



Battery  
Part # 09-055



Battery Charger  
Part # 09-050



VISION-LINK™ - PARTS | RESPIRATORS

VISION-LINK™ - PARTS | RESPIRATORS

## QUIET-LINK™ PARTS

Available for Z-Link® and T-Link®

Helmet Mounted Earmuff  
(pair, includes 18-535)  
Part # 18-533



Earmuff Bracket  
(pair, includes screws)  
Part # 16-516



1-866-494-4599 | [rpbsafety.com](http://rpbsafety.com)



**Z4<sup>®</sup>**

**POWERFUL  
PROTECTION**



*Protecting you for life's best moments.*

Z4®



## POWERFUL PROTECTION

With comfort and durability the top priority, RPB has created the most ergonomically balanced welding respirator available. Its lightweight design and multi-adjustment head suspension system ensures a stable fit that moves with you, reducing aches and strains on your neck, allowing you to enjoy life's best moments.

The Z4 boasts an optically clear grinding visor and a flip-up welding visor designed to increase operator productivity. Visibility is further enhanced by clip-in shade 5 side windows offering maximum peripheral vision. These can also be switched out for window blockers which are included in the standard package.

The Z4 includes the large RPB ADF lens with 1.1.1 optical quality rating guaranteeing uniform shading and distortion free vision, allowing you to work safely and more comfortably for longer across different angles.

To further increase your comfort and stability, the Z4 can also be fitted with the Comfort-Link™ padding system for an individualized fit.

The Z4 is certified to the standards below:



CE 2797

EN12941:1998  
+A2:2008 TH3/Z P R SL  
RESPIRATORY PROTECTION  
*See instruction manual for protection levels.*

EN352-1:2002  
HEARING PROTECTION  
*Only in conjunction with 18-524 earmuffs.*

EN166:2001 CLASS 1B  
EYE & FACE PROTECTION

EN379:2003+A1:2009  
and EN175:1997  
WELDING EYE PROTECTION

EN812:2012  
HEAD PROTECTION  
*Only in conjunction with 18-850 Bump Cap.*



AS/NZS 1716:2012  
BMP# 714303  
RESPIRATORY PROTECTION

AS/NZS 1337.1:2010  
BMP# 714304  
EYE & FACE PROTECTION

AS/NZS 1338.1:2012  
BMP# 714305  
WELDING EYE PROTECTION



Certified Model  
Modèle certifié

CSA Z94.3-15  
EYE & FACE PROTECTION  
Class 7D and 7B  
Respirator Facepiece  
PROTECTION DES YEUX  
ET DU VISAGE  
Masque respiratoire  
classe 7D et 7B

ANSI  
S3.19  
HEARING PROTECTION  
*Only in conjunction with 18-524 earmuffs.*  
Z87+  
EYE & FACE PROTECTION  
Z87W  
WELDING EYE PROTECTION

### DUAL AIR DISTRIBUTION SYSTEM

Air is delivered through the dual air distribution system, flowing over the grinding visor to eliminate lens fogging and also to the breathe zone. With the adjuster you can control the direction of the incoming air to suit your preferences.



1-866-494-4599 | [rpbsafety.com](http://rpbsafety.com)



\*From local and globally sourced components.

ISO9001  
CERTIFIED COMPANY

Flip up welding visor during grinding, while maintaining respiratory protection.

Optimum vision with a clear replaceable grinding lens - ANSI Z87+ (EN166) approved.

Lightweight headtop weighing just 1.77lbs (805g) with ADF and cape.

Aerodynamic shell design deflects fumes away.

Large auto darkening welding lens with a 1.1.1 rating. Variable lens shade (9-13).

Replaceable impact and ADF lenses for ease of maintenance. Optional magnifying lens available.

Comfortable multi-adjustment head suspension system - ergonomically balanced to reduce fatigue.

The dual air distribution system delivers 75% of air supply to your breathe zone via a multi-directional outlet. The remaining 25% is directed over the grinding visor to prevent fogging.

FR rated head cover and cape.



Z4® | 88 | RESPIRATORS

RESPIRATORS | 88 | Z4®

**Z4® PACKAGES**



Z4® PACKAGES | RESPIRATORS

Z4®  
FR Face Seal  
PX5® PAPR  
PX5® Breathing Tube  
Spark Arrestor  
Quiet-Slim™ Earmuffs  
Part # 15-018-11-FR



RESPIRATORS | Z4® - PACKAGES

For more information please visit [rpb.com/z4](http://rpb.com/z4)  
Other packages include:

- |  |  |  |  |   |   |
|--|--|--|--|---|---|
| <p>HX5™ PAPR</p>  | <p>C40™ Climate Control Device</p>  | <p>Constant Flow Valve</p>  | <p>Comfort Side Padding System</p>  | <p>Cape</p>  | <p>Gas Cartridge/Filter</p>  |
|--|--|--|--|---|---|

# Z4® ADF LENS

## OPEN STATE

### RPB OCV COLOR DEFINITION

The OCV Filter range offers superior color definition in both the open and activated state, allowing you to clearly see LED displays on machines and equipment, as well as heat definition on the actual weld.



## CLOSED STATE

### RPB OCV OPTICAL QUALITY

The OCV filter boasts a 1.11 optical quality rating. This means a clear view from a wider range of angles, reducing eye fatigue and increasing your productivity.



## 40% MORE VIEWING WITH THE RPB® OCV ULTRA ADF (110X110)

- Viewing Area: 10.35 square inches (2.66" x 3.89")
  - Light state: Shade 3. Dark state: Selectable shades 9-13
- Fast, reliable switching speed: 0.1ms at 73°F / 23°C
- Optional auto delay function from dark to light (0.15 to 1 seconds)
- Weight (ADF only): 4.59 oz / 130g
  - Temperature range: -4°F to 122°F / -20°C to +50°C
- 3 year warranty
- 2 Sensors, plus additional Ambient Light Sensor
- Sensitivity and optional delay adjustment on case
- Highest quality wide view ADF available
- Constant UV/IR protection
- Adapts to standard magnifying lens
- 1.11 DIN Rating
- Suitable for all types of electro-arc welding, including covered electrodes, MIG/MAG, TIG/WIG, plasma welding and cutting. NOT FOR LASER OR GAS WELDING.



# Z4® PARTS

RPB ADF Lens  
Part # 16-871



ADF Rear Lens (pk 10)  
Part # 16-873



Welding Impact Lens (pk 10)  
Part # 16-872



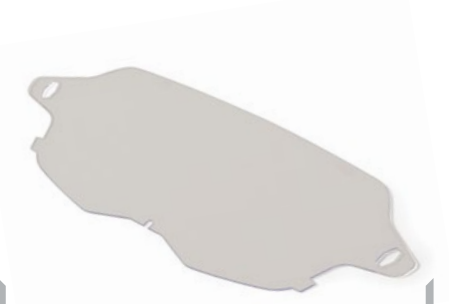
Magnifying Lens Holder  
Part # 16-875



Ultra Magnifying Lens  
(available in 1.0, 1.5, 2.0 and 2.5)  
Part # 13-072- (1, 1.5, 2 or 2.5)



Safety Lens (pk 10)  
Part # 15-878



# Z4® PARTS

Weld Visor Assembly  
(includes 16-672 and 15-821)  
**Part # 15-812**



Head Harness with Pads  
(includes 16-530 and 15-848)  
**Part # 15-840**



Head Harness Assembly  
(includes 16-530)  
**Part # 15-820**



Face Shield  
**Part # 15-811**



Short Breathing Tube  
for Backpack Assembly  
**Part # 04-841**



PX5® Breathing Tube  
**Part # 04-831**



Side Window Blockers -  
Solid Gray (pair) **Part # 15-821**  
Shade 5 (pair) **Part # 15-821-5**



Welding Lens Retainer  
**Part # 16-672**



Air Intake Assembly  
(includes screws)  
**Part # 15-851-1**



FR Breathing Tube Cover  
(Breathing Tube not included)  
**Part # 04-854**  
Short FR Breathing Tube Cover  
(Breathing Tube not included)  
**Part # 04-874**



SAR Breathing Tube Hose Washer  
(pk 5)  
**Part # NV2023**



SAR Breathing Tube  
**Part # 04-833**  
(previously 04-830)



# Z4® PARTS

FR Shoulder Cape  
Part # 15-721



Bump Cap  
(includes Comfort and Brow Pad  
and Front Strap)  
Part # 15-850



Bump Cap  
(includes Comfort Pad)  
Part # 15-855



Side Pad Mounts  
(pair, includes Velcro™ pieces)  
Part # 15-148



Comfort Side Padding System  
(includes Velcro™ pieces)  
Part # 15-848



Ratchet Assembly  
Part # 16-530



FR Face Seal  
Part # 15-711



Front Cape Clip Cover  
Part # 15-831



Foam Side Pads  
Part # 16-528



Quiet-Slim™ Earmuffs  
Part # 18-524



Spring Assembly Kit  
Part # 15-822



Brow Pad  
Part # 16-526



Safety Lens Bayonet (pair)  
Part # 15-832



Head Harness Bracket and  
Adjustment System  
Part # 15-830



**Z3™**

**UNCOMPROMISED  
OUTLOOK**

*Protecting you for life's best moments.*

Z3™



## UNCOMPROMISED OUTLOOK

The Z3 welding respirator combines RPB's high quality breathing principles with leading optical technology to modernize the classic welding visor.

Exceeding industry standards while delivering uncompromised comfort, the Z3 ensures you can perform at your best while receiving clean, filtered, breathable air. Constructed from high performance nylon, the Z3 can withstand extreme temperatures without distortion.

The Z3 includes a large RPB ADF lens with 1.1.1.1 optical quality rating guaranteeing uniform shading and distortion free vision, allowing you to work safely and more comfortably for longer across different angles.

The Z3 is certified to the standards below.



Z3™ | RESPIRATORS

### ADJUSTABLE AIR FLOW

The Z3's adjustable airflow enables you to adjust its direction to suit your preferences.



1-866-494-4599 | [rpbafety.com](http://rpbafety.com)

ISO9001  
CERTIFIED COMPANY

Centrally positioned air inlet distributes air to your breathe zone.

Adjustable air direction for maximum comfort.

Large auto darkening welding lenses with a 1.1.1.1 rating. Variable lens shade (9-13).

Enlarged mouth and nose area to reduce CO accumulation.

Lightweight helmet 26.6 ounces (755g) with ADF.

Breathing tube bracket to balance the headtop.

Light gray shell is manufactured from heat reflective/resistant high impact nylon.

Smooth rounded edge for additional comfort.

Aerodynamic shell deflects fumes away.

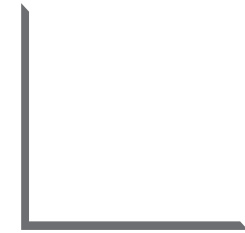
RESPIRATORS | Z3™



# Z3™ PACKAGES

ADVANCING YOUR SAFETY  
Z3™ - PACKAGES | RESPIRATORS

Z3™  
Flow Control Valve  
SAR Breathing Tube  
Part # 13-102



For more information please visit [rpb.com/z3](http://rpb.com/z3)  
Other packages include:

Constant Flow Valve

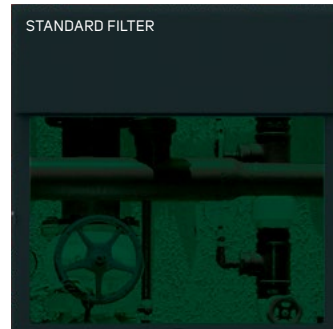
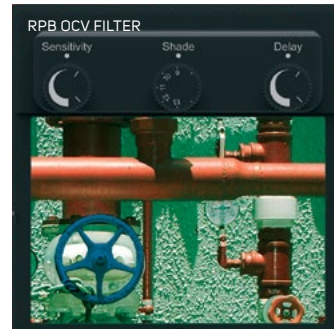
RESPIRATORS | Z3™ - PACKAGES

# Z3™ ADF LENS

## OPEN STATE

### RPB OCV COLOR DEFINITION

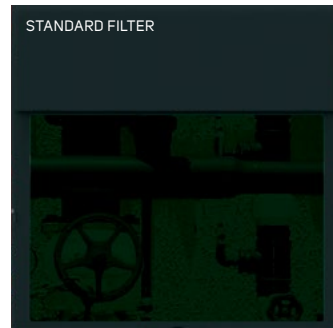
The OCV Filter range offers superior color definition in both the open and activated state, allowing you to clearly see LED displays on machines and equipment, as well as heat definition on the actual weld.



## CLOSED STATE

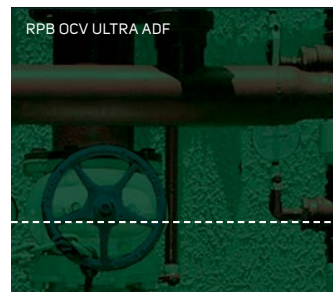
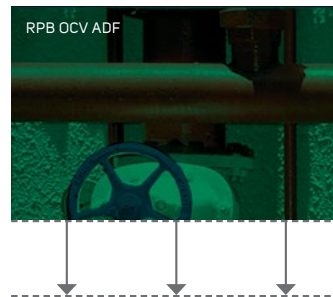
### RPB OCV OPTICAL QUALITY

The OCV filter boasts a 1.1:1 optical quality rating which is the world's best. This means a clear view from a wider range of angles, reducing eye fatigue and increasing your productivity.



## 40% MORE VIEWING WITH THE RPB® OCV ULTRA ADF (110X110)

- Viewing Area: 10.1 square inches (3.78" x 2.68")
  - Light state: Shade 4. Dark state: Selectable shades 9-13
- Fast, reliable switching speed: 0.15ms at 73°F / 23°C
- Adjustable delay from dark to light (0.2 to 0.8 seconds)
- Weight (ADF only): 5.64 oz / 160g
  - Temperature range: 14°F to 140°F / -10°C to +60°C
- 3 year warranty
- 2 Sensors: it is the quality not the quantity of sensors that provide the fast reaction time of the filter
- Sensitivity and delay adjustment on case
- Highest quality wide view ADF available
- Constant UV/IR protection
- Accommodates standard 4" x 5" front cover lens
- Adapts to standard magnifying lens
- Best optical quality in the industry - 1.1:1 DIN Rating
- Suitable for all types of electro-arc welding, including covered electrodes, MIG/MAG, TIG/WIG, plasma welding and cutting.
  - NOT FOR LASER OR GAS WELDING.



# Z3™ PARTS

Outer Lens Frame  
Part # 13-050



SAR Breathing Tube Hose Washer  
(pk 5)  
Part # NV2023



FR Breathing Tube Cover  
(Breathing Tube not included)  
Part # 04-854



PX5® Breathing Tube (for Z3™)  
Part # 04-832



SAR Breathing Tube  
Part # 03-031



# Z3™ PARTS

Magnifying Lens Holder  
Part # 13-071



ADF Ultra Filter  
(3.78" x 2.68" / 107mm x 71.5mm)  
Part # 13-062



Ultra Magnifying Lens  
(available in 1.0, 1.5, 2.0 and 2.5),  
(requires 13-071)  
Part # 13-072- (1, 1.5, 2 or 2.5)



Ultra Rear Lens (pk 10,  
3.78" x 2.68" / 107mm x 71.5mm)  
Part # 13-054



Impact Lens (pk 10)  
Part # 13-052



Outer Lens Frame Seals  
Part # 13-051



Hard Hat Adapter Clips  
Part # 13-045



Hard Hat (includes 13-045)  
Part # 13-326



Swivel Air Fitting Elbow  
Part # 03-032



Head Harness  
Part # 13-042



Hose Holder  
Part # 13-041



Comfort Padding  
(Sweat Band and Neck Pad)  
Part # 13-043



Flex Face Seal  
Part # 13-323



Z3™ - PARTS | RESPIRATORS

Z3™ - PARTS | RESPIRATORS

**NOVA 3<sup>®</sup>**

**UNRIVALLED COMFORT**



*Protecting you for life's best moments.*

# NOVA 3®



## UNRIVALLED COMFORT

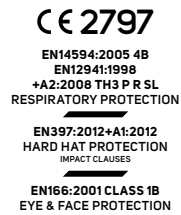
The RPB Nova 3 revolutionizes the abrasive blasting experience with the world's most comfortable blasting respirator. With breakthrough technology and comfort, the Nova 3 has been designed around the operator's needs to advance their safety and productivity.

Visibility has been at the forefront of the Nova 3 design process. With the unique cassette lens system, you can experience an optically clear field of view at all times. The superior operating window optimizes peripheral vision and allows for 30% more downward vision than other respirators on the market.

The ratchet padding system provides a customizable fit and molded side pads absorb sound, protecting against hearing loss. Its unique helmet design distributes weight evenly across your head and shoulders, keeping the center of gravity low, eliminating top heaviness, and relieving you from aches and strains on your neck.

All parts are field replaceable to minimize downtime and the padding system is machine washable for hygiene purposes.

The Nova 3 is certified to the standards below:



### BOOST PRODUCTIVITY

Our cassette lens system enables you easily tear-off the outer lens when your view becomes obstructed, significantly reducing your downtime.



1-866-494-4599 | [rpbsafety.com](http://rpbsafety.com)

ISO9001  
CERTIFIED COMPANY

Bellow seal creates a complete barrier to dust and particulates.

Widened perspective provides optimal downward and peripheral field of view.

Tear-off lens system to ensure you always have a clear visor when operating. Cassette lens system available to further increase productivity.

Streamlined air deflection system distributes air across your breathe zone and across the lens to prevent fogging.

Tough helmet shell, manufactured from robust engineering grade nylon offers ANSI Z89.1 (EN397) certified hard hat protection.

Ratchet system and adjustable molded side pads to help create a secure, customized fit.

Large, glove sized latch that is easy to locate and use.

Removable visor for efficient lens replacement.

Cape is securely attached with eight snap fasteners.



\*From local and globally sourced components.

Nova 3® shown with optional L4™ light.



RESPIRATORS | NOVA 3®

# NOVA 3<sup>®</sup> PACKAGES

NOVA 3<sup>®</sup> - PACKAGES | RESPIRATORS



NOVA 3<sup>®</sup>  
 Nylon Respirator Cape  
 C40™ Climate Control Device  
 SAR Breathing Tube  
**Part # NV3-705-50**



RESPIRATORS | NOVA 3<sup>®</sup> - PACKAGES

For more information please visit [rpb-safety.com/nova-3](http://rpb-safety.com/nova-3)  
 Other packages include:

- |   |   |                  |                 |                     |                                    |
|---|---|------------------|-----------------|---------------------|------------------------------------|
| <p>Constant Flow Valve<br/>for CE only (Europe)</p> | <p>Flow Control Valve<br/>for NIOSH only<br/>(USA and CA)</p> | <p>Cool Tube</p> | <p>Hot Tube</p> | <p>Blast Jacket</p> | <p>Leather Respirator<br/>Cape</p> |
|---|---|------------------|-----------------|---------------------|------------------------------------|

# NOVA 3® PARTS

Cassette Lens System  
(pk 20, 5 Tear-off and 1 Outer Lens fused together)  
Part # NV3-745



SAR Breathing Tube Hose Washer  
(pk 5)  
Part # NV2023



Tinted Inner Lens (pk 10)  
Part # NV3-722-T



Visor Kit  
(includes Hinge and Latch)  
Part # NV3-726



Supplied Air Breathing Tube  
Part # NV2021B



Hinge Lock  
Part # NV3-727-2



Outer Lens (pk 50)  
Part # NV3-724



Inner Lens (pk 10)  
Part # NV3-722



Tear-off Lens (pk 50)  
Part # NV3-725



Inner Lens Frame  
Part # NV3-723



Inner Gasket  
Part # NV3-721



NOVA 3® - PARTS | RESPIRATORS

RESPIRATORS | NOVA 3® - PARTS

# NOVA 3® PARTS

Visor Mount Kit (includes 4pcs FS-40 nuts and 4pcs FS-46 screws)  
Part # NV3-727/8



Head Liner Kit (includes NV3-734-1)  
Part # NV3-734



Padding Connectors (left and right)  
Part # NV3-730



Side Padding Frames (left and right)  
Part # NV3-731



Head Liner Clips (pk 4)  
Part # NV3-734-1



Side Padding Covers (5 pairs)  
Part # NV3-733



Side Padding Foam and Covers (available in 5mm, 10mm, 15mm, and 20mm)  
Part # NV3-732- (A5, A10, A15 or A20)



Head Liner Foam Padding  
Part # NV3-735



Hygiene Kit (available in 5mm, 10mm, 15mm, and 20mm)  
Part # NV3-736- (A05, A10, A15 or A20)



Neck Pad  
Part # NV3-735-1



NOVA 3® - PARTS | RESPIRATORS

NOVA 3® - PARTS | RESPIRATORS

# NOVA 3® PARTS

Extra Length Nylon Respirator Cape  
(includes Inner Bib NV2012)  
Part # NV3-751



Nylon Respirator Cape  
(includes Inner Bib NV2012)  
Part # NV3-750



Leather Respirator Cape  
(includes Inner Bib NV2012)  
Part # NV3-752



Extra Length Leather Respirator  
Cape (includes Inner Bib NV2012)  
Part # NV3-753



Blast Jacket size XL  
(includes Inner Bib NV2012)  
Part # NV3-754



Blast Jacket size XXL  
(includes Inner Bib NV2012)  
Part # NV3-755



Domes (8 sets)  
Part # NV2041



Inner Bib  
Part # NV2012



Cape Cover Band  
Part # NV3-759



Air Inlet Kit  
Part # NV3-729



Adjustable Head Support  
Part # 07-900



# NOVA 3<sup>®</sup> TALK<sup>™</sup>

ADVANCED IN-HELMET  
COMMUNICATION SYSTEM



*Protecting you for life's best moments.*

rpb.

# NOVA 3® TALK™



## ADVANCED IN-HELMET COMMUNICATION SYSTEM

The Nova talk is a wireless radio communication system, that allows you to communicate effortlessly and safely with your fellow blasters, pot tenders and team members. With simple push to talk, noise-canceling microphone, the Nova talk is ideal for working in loud remote locations, like tanks, shipyards, or any other areas that are difficult to access.

NOVA 3® TALK™  
Upgrade Kit (cable not included, see page 74)  
(radio not supplied)  
Part # 09-903



# NOVA 3® TALK™ PARTS

ISO9001  
CERTIFIED COMPANY

R-TEX High Noise Headset  
(includes PTT, radio not supplied)  
Part # 09-916



Side Padding Covers  
(for Nova 3 Talk, 5 pairs)  
Part # NV3-733TK



Chest Harness  
Part # 09-814



Push to Talk Button  
Part # 09-913



# NOVA 3® TALK™ PARTS

Motorola Connection Cable  
(multi-pin)  
Part # 09-931



Motorola Connection Cable  
(multi-pin)  
Part # 09-932



Kenwood Connection Cable  
(two-pin)  
Part # 09-933



Motorola Connection Cable  
(two-pin)  
Part # 09-930



Motorola Connection Cable  
(multi-pin)  
Part # 09-934



# NOVA 3® TALK™ SPECIFICATIONS

## MOTOROLA TWO-PIN RADIO MODELS

AXU4100, AXV5100, BPR40, CLS1110, CLS1410, CLS1413, CLS1450C, CLS1453C, CP100, CP150, CP185, CP200, CP88, CT125, CT150, CT250, CT450, CT450LS, DTR, DTR410, DTR550, DTR650, GP200, GP2000, GP300, GP308, GP68, GP88, GTI, GTX, LTS2000, PO40, PO80, P110, P1225, P1225LS, P200, P2000, PR400, RDK, RDU, RDU2020, RDU2080D, RDU4100, RDU4160D, RDV, RDV2020, RDV2080D, RDV5100, SP10, SP21, SP50, VL50, XTN, XTN446, XTN500, XTN600, XU1100, XU2100, XU2600, XV1100, XV2100, XV2600.

Part # 09-930

## MOTOROLA MULTI-PIN RADIO MODELS

CBPRO, GP1280, GP140, GP320, GP328, GP329, GP338, GP339, GP340, GP360, GP380, GP640, GP650, GP680, GP960, HT1250, HT1250LS, HT1550, HT1550XLS, HT750, JT1000, MTX8250, MTX8250LS, MTX850, MTX850LS, MTX9250, MTX950, PR860, PRO5150, PRO5350, PRO5450, PRO5550, PRO5750, PRO7150, PRO7350, PRO7450, PRO7550, PRO7750, PRO9150, PTX700, PTX760, PTX780.

Part # 09-931

Turbo, APX 7000, XPR6300, XPR6500, XPR6550, APX7500.

Part # 09-932

GP900, GP9000, HT1000, MT1500, MT2000, MTS2000, MTX8000, MTX838, MTX900, MTX9000, MTX960, MTXLS, PRI500, X1500, XTS1500, XTS2000, XTS2500, XTS3000, XTS3500, XTS5000, GP1200.

Part # 09-934

## KENWOOD TWO-PIN RADIO MODELS

TH-22AT, TH-235A, TH-28A, TH-42AT, TH-48A, TH-77A, TH-78A, TH-D7A(G), TH-F6, TH-6A, TH-G71A, TH-K2AT, TK-2100, TK-2102, TK-2130, TK-2160, TK-2170, TK-220, TK-2000, TK-2200LP, TK-2212L, TK-230VK, TK-240, TK-240D, TK-248, TK-250, TK-260, TK-260D, TK-260G, TK-270, TK-270G, TK-272G, TK-308, TK-3100, TK-3101, TK-3102, TK-3130, TK-3131, TK-3160, TK-3170, TK-3173, TK-320, TK-3200, TK-3200LP, TK-3212L, TK-3230, TK-3230XLS, TK-3302UK, TK-340, TK-340D, TK-348, TK-350, TK-353, TK-360, TK-360G, TK-370, TK-370G, TK-372G, TK-373, TK-430, TK-431, TK-2312, TK-3312.

Part # 09-933

HINT: Push the 'CONTROL' key plus the 'F' key to search for your radio model.

NOTE: If the radio you are looking for is not in the above list, contact us toll free on 1-866-494-4599, we may be able to find a cable to suit.



**L4™ LIGHT**

**INTUITIVE LIGHTING**



*Protecting you for life's best moments.*

# L4™ LIGHT



## INTUITIVE LIGHTING

Light up your environment with the L4 helmet light to reduce hazards, downtime and ensure you can always see everything.

The L4 Light provides a steady, highly concentrated output of light to your field of vision. Its high-powered LEDs produce up to 650 lumens of concentrated light output with a compact, lightweight battery pack that mounts comfortably and securely on your belt.

The L4 Light features a low-profile design, enhancing operator control with minimum protrusion and mounts securely to the top of the RPB Nova 3 Respirator, providing light wherever the operator looks, eliminating the safety risks and inefficiencies associated with outdated nozzle lights.

Manufactured with durable, long-lasting materials.

Efficient, high powered LEDs producing up to 650 lumens of concentrated light output.

Mounts directly to the Nova 3\* with no modification required.

### EXTRA LONG LIFE

Long lasting Li-ion battery lasts up to 4 hours on a single charge. Batteries recharge in 3-4 hours. The lightweight battery pack mounts on your belt.



1-866-494-4599 | [rpbsafety.com](http://rpbsafety.com)

ISO9001  
CERTIFIED COMPANY



\*From local and globally sourced components.



# L4™ LIGHT PACKAGES

L4™ LIGHT - PACKAGES | 8 | RESPIRATORS



L4™ LIGHT  
Part # 09-502  
(AU/NZ, EU and UK cables available)



RESPIRATORS | 8 | L4™ LIGHT - PACKAGES

For more information please visit [rpbsafety.com/l4-light](https://rpbsafety.com/l4-light)  
Other packages include:



# L4™ LIGHT PARTS

Battery Charger  
(Power Cable not included)  
Part # 09-525



Battery Pack  
Part # 09-532-2



Battery Charger and Power Cable  
US Part # 09-526  
Global Part # 09-526-G



Power Cable  
US Part # 09-021  
AU/NZ Part # 09-021-AU  
EU Part # 09-021-EU  
UK Part # 09-021-UK



Cable and Hose Clamp  
Part # 07-122



L4™ Light and Mount Kit  
(includes 09-520)  
Part # 09-512



Mounting Clip  
Part # 09-520



Outer Lens (pk 10)  
Part # 09-522



**NOVA 2000®**

**THE ABRASIVE  
BLASTING CLASSIC**

NOVA 2000

*Protecting you for life's best moments.*

# NOVA 2000®



## THE ABRASIVE BLASTING CLASSIC

In 1994, RPB made history with our revolutionary abrasive blasting respirator, the Nova 2000. Designed by blasters for blasters, the Nova 2000 embodies ingenuity and practicality at its core, enabling you to get more out of your day.

The Nova 2000 incorporates a multi-layered sound deadening padding system, ensuring the respirator sits comfortably on your head and turns with you. Utilizing the tear-off lens system, the Nova 2000 ensures you always maintain a clear field of view, helping to advance your safety and increase your productivity.

All parts are field replaceable to minimize downtime and the padding is machine washable for hygiene purposes. The Nova 2000 is a pioneering piece of history that continues to advance safety and increase productivity.

The Nova 2000 is certified to the standards below:



NOVA 2000® | 99 | RESPIRATORS

### BOOST PRODUCTIVITY

Operators have reported a time saving of over 45 minutes per day per blaster by using our tear-off lenses.

With individually pre-folded tabs, this system guarantees only one lens will be removed at a time.



1-866-494-4599 | [rpbsafety.com](http://rpbsafety.com)



From local and globally sourced components.

ISO9001  
CERTIFIED COMPANY

Hand strap for easy transportation and storage.

Streamlined air distribution system supports air movement across your breathe zone and over the lens preventing fogging.

Multi-layered sound deadening foam for hearing protection.

Manufactured from robust U.V stabilized and abrasive resistant material.

Robust latch that is easy to locate and use.

Widened perspective provides optimal downward and peripheral field of view.

Choose from four cape options: Leather cape, nylon cape, extra length nylon cape or blast jacket.

Cape is securely attached with eight snap fasteners.

RESPIRATORS | 97 | NOVA 2000®



# NOVA 2000® PACKAGES

NOVA 2000® - PACKAGES | 88 | RESPIRATORS



NOVA 2000®  
Nylon Respirator Cape  
Flow Control Valve  
SAR Breathing Tube  
Part # NV2000



RESPIRATORS | 88 | NOVA 2000® - PACKAGES

For more information please visit [rpb.com/nova-2000](http://rpb.com/nova-2000)  
Other packages include:

- |                             |           |          |                         |              |
|-----------------------------|-----------|----------|-------------------------|--------------|
| C40® Climate Control Device | Cool Tube | Hot Tube | Leather Respirator Cape | Blast Jacket |
|                             |           |          |                         |              |

# NOVA 2000® PARTS



Window Frame Gasket  
Part # NV2003

Latch Kit  
Part # NV2008

Visor Kit  
Part # NV2004

Hand Strap  
Part # NV2042

Cape Cover Band  
Part # NV2013

Domes (8 sets)  
Part # NV2041

Tinted Inner Lens (pk 10)  
Part # NV2018-T

Air Inlet Assembly  
Part # 03-035  
(previously NV2006/7 and NV2006/7 CE)

Velstuds (pk 6)  
Part # NV2038

Inner Lens (pk 10)  
Part # NV2018

Tear-off Lens (pk 50)  
Part # NV2017

Outer Lens 0.05mm thick (pk 50)  
Part # NV2031  
Outer Lens 0.04mm thick (pk 50)  
Part # NV2031-015

NOVA 2000® - PARTS | 8 | RESPIRATORS

RESPIRATORS | 9 | NOVA 2000® - PARTS



# NOVA 2000® PARTS

Helmet Liner  
 size Small **Part # NV2009SH**  
 size Medium **Part # NV2009**  
 size Large **Part # NV2009LH**



Hygiene Kit  
 size Small **Part # NV2009/10SH**  
 size Medium **Part # NV2009/10**  
 size Large **Part # NV2009/10LH**



Supplied Air Breathing Tube  
**Part # NV2021B (previously NV2021)**



Side Wings (pair)  
 size Small **Part # NV2010SH**  
 size Medium **Part # NV2010**  
 size Large **Part # NV2010LH**



SAR Breathing Tube Hose Washer  
 (pk 5)  
**Part # NV2023**



Nylon Respirator Cape  
**Part # NV2002**



Extra Length Nylon Respirator Cape  
**Part # NV2002XL**



Leather Respirator Cape  
**Part # NV2002L**



Nylon Blast Jacket size XL  
**Part # NV2002HB-XL**



Nylon Blast Jacket size XXL  
**Part # NV2002HB-XXL**



Inner Bib  
**Part # NV2012**



# NOVA 2000<sup>®</sup> TALK<sup>™</sup>

ADVANCED IN-HELMET  
COMMUNICATION SYSTEM



*Protecting you for life's best moments.*

# NOVA 2000® TALK™



## ADVANCED IN-HELMET COMMUNICATION SYSTEM

The Nova talk is a wireless radio communication system, that allows you to communicate effortlessly and safely with your fellow blasters, pot tenders and team members. With simple push to talk, noise-canceling microphone, the Nova talk is ideal for working in loud remote locations, like tanks, shipyards, or any other areas that are difficult to access.

NOVA 2000® TALK™  
Upgrade Kit (cable not included, see page 98)  
(radio not supplied)  
Part # 09-900



# NOVA 2000® TALK™ PARTS

ISO9001  
CERTIFIED COMPANY

Push to Talk Button  
Part # 09-913



Chest Harness  
Part # 09-814



R-TEX High Noise Headset  
(includes PTT)  
Part # 09-916



# NOVA 2000® TALK™ PARTS

Motorola Connection Cable  
(multi-pin)  
Part # 09-931



Motorola Connection Cable  
(multi-pin)  
Part # 09-932



Kenwood Connection Cable  
(two-pin)  
Part # 09-933



Motorola Connection Cable  
(two-pin)  
Part # 09-930



Motorola Connection Cable  
(multi-pin)  
Part # 09-934



# NOVA 2000® TALK™ SPECIFICATIONS

## MOTOROLA TWO-PIN RADIO MODELS

AXU4100, AXV5100, BPR40, CLS1110, CLS1410, CLS1413, CLS1450C, CLS1453C, CP100, CP150, CP185, CP200, CP88, CT125, CT150, CT250, CT450, CT450LS, DTR, DTR410, DTR550, DTR650, GP200, GP2000, GP300, GP308, GP68, GP88, GTI, GTX, LTS2000, PO40, PO80, P110, P1225, P1225LS, P200, P2000, PR400, RDK, RDU, RDU2020, RDU2080D, RDU4100, RDU4160D, RDV, RDV2020, RDV2080D, RDV5100, SP10, SP21, SP50, VL50, XTN, XTN446, XTN500, XTN600, XU1100, XU2100, XU2600, XV1100, XV2100, XV2600.

Part # 09-930

## MOTOROLA MULTI-PIN RADIO MODELS

CBPRO, GP1280, GP140, GP320, GP328, GP329, GP338, GP339, GP340, GP360, GP380, GP640, GP650, GP680, GP960, HT1250, HT1250LS, HT1550, HT1550XLS, HT750, JT1000, MTX8250, MTX8250LS, MTX850, MTX850LS, MTX9250, MTX950, PR860, PRO5150, PRO5350, PRO5450, PRO5550, PRO5750, PRO7150, PRO7350, PRO7450, PRO7550, PRO7750, PRO9150, PTX700, PTX760, PTX780.

Part # 09-931

Turbo, APX 7000, XPR6300, XPR6580, XPR6500, XPR6550, APX7500.

Part # 09-932

GP900, GP9000, HT1000, MT1500, MT2000, MTS2000, MTX8000, MTX838, MTX900, MTX9000, MTX960, MTXLS, PRI500, X1500, XTS1500, XTS2000, XTS2500, XTS3000, XTS3500, XTS5000, GP1200.

Part # 09-934

## KENWOOD TWO-PIN RADIO MODELS

TH-22AT, TH-235A, TH-28A, TH-42AT, TH-48A, TH-77A, TH-78A, TH-D7A(G), TH-F6, TH-6A, TH-G71A, TH-K2AT, TK-2100, TK-2102, TK-2130, TK-2160, TK-2170, TK-220, TK-2000, TK-2200LP, TK-2212L, TK-230VK, TK-240, TK-240D, TK-248, TK-250, TK-260, TK-260D, TK-260G, TK-270, TK-270G, TK-272G, TK-308, TK-3100, TK-3101, TK-3102, TK-3130, TK-3131, TK-3160, TK-3170, TK-3173, TK-320, TK-3200, TK-3200LP, TK-3212L, TK-3230, TK-3230XLS, TK-3302UK, TK-340, TK-340D, TK-348, TK-350, TK-353, TK-360, TK-360G, TK-370, TK-370G, TK-372G, TK-373, TK-430, TK-431, TK-2312, TK-3312.

Part # 09-933

HINT: Push the 'CONTROL' key plus the 'F' key to search for your radio model.

NOTE: If the radio you are looking for is not in the above list, contact us Toll Free on 1-866-494-4599, we may be able to find a cable to suit.



**ASTRO™**

**THE ECONOMIC  
BLASTING CHOICE**

*Protecting you for life's best moments.*

**ASTRO™**



## THE ECONOMIC BLASTING CHOICE

The RPB Astro is the undisputed economic champion of the abrasive blasting world. Meeting safety standards worldwide, including Australia, Europe and the USA, this classic flat lens design is part of RPB's design DNA.

Productivity is always at the forefront of our engineers' minds when designing our range. Incorporating our tear-off lens system saves you up to 45 minutes per day and ensures your visibility is never compromised. Weighing just 2.6lbs/1.2kgs (excluding breathing tube), the Astro's lightweight design helps to reduce fatigue, and minimizes aches and strains on your neck and shoulders.

The Astro offers low lifetime maintenance and part replacement costs, offering you unbeatable value and return on investment without compromising your safety.

The Astro is certified to the standards below:



**CE 2797**  
EN14594:2005 4B  
RESPIRATORY PROTECTION



### BOOST PRODUCTIVITY

Operators have reported a time saving of over 45 minutes per day per blaster by using our tear-off lenses. With individually pre-folded tabs, this system guarantees only one lens will be removed at a time.



1-866-494-4599 | [rpbsafety.com](http://rpbsafety.com)

**ISO9001**  
CERTIFIED COMPANY

Manufactured from robust U.V stabilized and abrasive resistant material.

Removable head suspension allows for easy cleaning.

Hand strap for easy transportation and storage.

Streamlined air distribution system supports air movement across your breathe zone and over the lens prevent fogging.

Sturdy visor frame with molded hinge.

Large visor lens for widened field of view.

Optional tear-off lenses are available.

Unique, high-strength visor strap.

Cap is securely attached with 8 stud domes.



Designed and globally manufactured with high quality components.



ASTRO™ RESPIRATORS

ASTRO™ RESPIRATORS

# ASTRO™ PACKAGES

ASTRO™ - PACKAGES | RESPIRATORS



ASTRO™  
Nylon Respirator Cape  
Flow Control Valve  
SAR Breathing Tube  
Part # 02-800



RESPIRATORS | ASTRO™ - PACKAGES

For more information please visit [rpb.com/astro](https://rpb.com/astro)  
Other packages include:

C40™ Climate  
Control Device



Leather Respirator  
Cape



# ASTRO™ PARTS

Leather Respirator Cape  
Part # NV2002L



Nylon Respirator Cape  
Part # NV2002



Cape Cover Band  
Part # 02-812



Inner Bib  
Part # NV2012



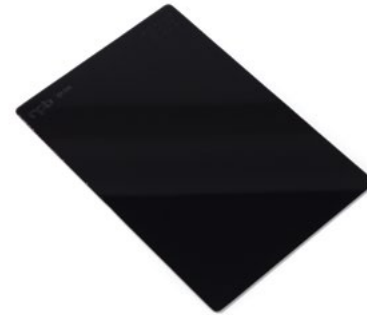
Hand Strap  
Part # NV2042



Visor Strap (pk 5)  
Part # 02-805



Tinted Inner Lens (pk 10)  
Part # 02-810-T



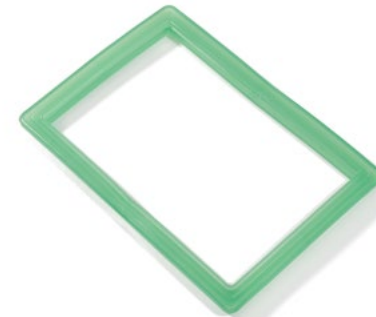
Inner Lens (pk 10)  
Part # 02-810



Outer Lens (pk 50)  
Part # 02-811-015



Window Gasket Seal  
Part # 02-807



Tear-off Lens (pk 50)  
Part # 02-816



Visor Kit  
(includes 02-805 and screws)  
Part # 02-804



ASTRO™ - PARTS | RESPIRATORS

RESPIRATORS | ASTRO™ - PARTS

# ASTRO™ PARTS

Low Flow Indicator Assembly  
Part # NV2030



Cleat and Screws  
Part # 02-806



Air Inlet Assembly  
Part # 03-035  
(previously NV2006/7  
and NV2006/7 CE)



Head Harness  
(CE approved)  
Part # 02-809CE



Domes (8 sets)  
Part # NV2041



Supplied Air Breathing Tube  
Part # NV2021B  
(previously NV2021)



Head Harness  
(NIOSH approved)  
Part # 02-809



Suspension Clips (pk 4)  
Part # 02-808



SAR Breathing Tube Hose Washer  
(pk 5)  
Part # NV2023



**T-LINK®**

**MOVE FREELY**

*Protecting you for life's best moments.*

T-LINK®



## MOVE FREELY

The RPB T-Link has been designed to move with you, not against you. With your comfort and job our main focus, the T-Link transforms how you work, advancing your safety and increasing productivity.

Your ability to see has been at the forefront of our design process, with the T-Link boasting a large visor that enables you to easily connect with your surroundings. This is further supported by our Tychem® hood that securely attaches to the headtop, ensuring your downward and peripheral vision is never compromised. The soft breathable inner-bib and extra tuck-in collar ensures maximized comfort and helps to direct air down your body for cooling.

Fitted with a padded headliner and head suspension system, the headtop's weight is evenly distributed to enhance your experience of comfort, relieving you of aches and strains on your neck. Being fully adjustable ensures the respirator fits securely to all head sizes, maximizing stability and always moving with your head.

Our innovative design ensures you have a greater range of movement, so you can focus on the task at hand.

The T-Link is certified to the standards below:



**S3.19**  
HEARING PROTECTION  
Only in conjunction with 19-533 earmuffs.

**Z89.1**  
HARD HAT PROTECTION  
Type 1 Class C  
Not all configurations conform to this standard.  
Please visit [rpbsafety.com](http://rpbsafety.com) for more details.

**Z87**  
EYE & FACE PROTECTION  
Not all configurations conform to this standard.  
Please visit [rpbsafety.com](http://rpbsafety.com) for more details.

**CE 2797**

**EN14594:2005 3B**  
**EN12941:1998 +A2:2008**  
**TH3 P R SL**  
RESPIRATORY PROTECTION

**EN352-3:2002**  
HEARING PROTECTION  
Only in conjunction with 19-533 earmuffs.

**EN397:2012+A1:2012**  
HARD HAT PROTECTION  
Not all configurations conform to this standard.  
Please visit [rpbsafety.com](http://rpbsafety.com) for more details.

**EN812:2012**  
BUMP CAP PROTECTION  
Not all configurations conform to this standard.  
Please visit [rpbsafety.com](http://rpbsafety.com) for more details.

**EN166:2001 CLASS 1F3**  
EYE & FACE PROTECTION  
Not all configurations conform to this standard.  
Please visit [rpbsafety.com](http://rpbsafety.com) for more details.



BSI Certified Product  
**AS/NZS 1716:2012**  
**BMP# 714303**  
RESPIRATORY PROTECTION

**AS/NZS 1801:1997**  
**BMP# 714306**  
HARD HAT PROTECTION  
Not all configurations conform to this standard.  
Please visit [rpbsafety.com](http://rpbsafety.com) for more details.

**AS/NZS 1337.1:2010**  
**BMP# 714304**  
EYE & FACE PROTECTION  
Not all configurations conform to this standard.  
Please visit [rpbsafety.com](http://rpbsafety.com) for more details.

### OPTIONAL COMFORT-LINK™ FIT SYSTEM

The Comfort-Link™ is an optional, fully-adjustable fit system that allows total control of helmet and head placement as well as making sure the T-Link moves with your head.



1-866-494-4599 | [rpbsafety.com](http://rpbsafety.com)

ISO9001  
CERTIFIED COMPANY

Option of bump cap or ANSI Z89.1 hard hat protection (EN397).

Two cape materials available: DuPont™ Tychem® 2000, DuPont™ Tychem® 4000.

Breathing tube easily attaches to the respirator and swivels to eliminate tangles. Centralized location ensures even weight distribution.

Adjustable ratchet system ensures a customized fit that supports movement, while increasing comfort and productivity.

Padded headliner supports weight distribution while relieving you of the effects of any pressure points.

Air flow and distribution is fully adjustable with the air deflector system to suit personal preference.

Optional ANSI Z87 approved safety lens (EN166).

Large viewing window for exceptional downward and peripheral vision.

Fixed lens frame ensures the lens will never hit your nose or optical aids being used.

Optically clear peel-off and cassette lenses available.



From local and globally sourced components.



Soft, breathable inner-bib and long tuck-in collar for extra protection and upper body air flow.

T-LINK®  
RESPIRATORS | 13



# T-LINK® PACKAGES



T-LINK® - PACKAGES | RESPIRATORS

1-866-494-4599 | [rpb-safety.com](http://rpb-safety.com)

T-LINK®  
 Bump Cap Assembly  
 Tychem® 2000 Hood  
 PX5® PAPR  
 PX5® Breathing Tube  
 Part # 17-118-12



RESPIRATORS | T-LINK® - PACKAGES

For more information please visit [rpb-safety.com/t-link](http://rpb-safety.com/t-link)  
 Other packages include:



# T-LINK® PARTS

T-Link® Bump Cap Assembly  
Part # 17-110



T-Link® Hard Hat Assembly  
Part # 17-010



Jaw (includes 16-515)  
Part # 16-514



Tychem® 2000 Hood  
Part # 17-712



Tychem® 4000 Hood  
with Sealed Seams  
Part # 17-713



Tychem® 4000 XL Hood  
with Sealed Seams, 0.40 Lens  
Part # 17-713-SX



Peel-off Lens (pk 25)  
Part # 17-815



Cassette Lens (7 layers)  
Part # 17-817



SAR Breathing Tube  
Part # 04-833  
(previously 04-830)



SAR Breathing Tube Hose Washer  
(pk 5)  
Part # NV2023



Air Inlet Adapter  
Part # 16-519



PX5® Breathing Tube  
Part # 04-831



Short Breathing Tube  
for Backpack Assembly  
Part # 04-841



Tychem® Breathing Tube Cover  
(Breathing Tube not included)  
Part # 04-852

Short Tychem® Breathing Tube Cover  
(Breathing Tube not included)  
Part # 04-872



# T-LINK® PARTS

Fit System (includes 16-520-S, 16-521, 16-522, 16-525, 16-526, 16-530 and 16-531)  
Part # 16-520-T



Impact Absorber  
Part # 16-521



Comfort Pad  
Part # 16-522



Brow Pad  
Part # 16-526



Side Padding System  
(needed for Comms-Link™)  
Part # 16-520-S



Earmuff Bracket  
(pair, includes screws)  
Part # 16-516



Side Padding Frames  
Part # 16-527



Head Harness (includes 16-530)  
Part # 16-531



Head Harness System  
Bracket and Air Deflector  
Part # 16-525



Foam Side Pads  
Part # 16-528



# T-LINK® PARTS

Ratchet Assembly  
Part # 16-530



Lens Clips (pair)  
Part # 17-512



**T200™**

**PROTECTION THAT  
SUPPORTS YOU**



*Protecting you for life's best moments.*

T200™



## PROTECTION THAT SUPPORTS YOU

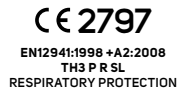
The RPB T200 enables you to work in your environment free of respiratory hazards and discomfort through its supportive design. With positive pressure breathing and true freedom of movement, the T200 ensures you can navigate your surroundings without any restrictions so you can focus on what's in front of you.

Made for customization, the T200's head harness features multiple adjustment points, allowing you to change the fitting to suit the contours and shape of your head. Through the secure fit and streamlined framework, this maximizes stability, relieving you of aches and strains on your neck.

With the large clear visor, experience an uncompromised field of view that allows for greater precision and attention. The T200 also features an adjustable lens and air ducting positioning to accommodate for different facial features and the use of optical aids such as loupes and prescription lens glasses.

Get more out of your role by using respiratory protection that supports, not restricts you. Experience more with RPB.

The T200 is certified to the standards below:



Deconable head suspension system and disposable hood.

Large viewing window for exceptional downward and peripheral vision allowing for both verbal and non-verbal communication.

Soft inner neck seal for extra comfort.

DuPont™ Tychem® 2000 available in face seal, medium length and full length hood options. Full length hood also available in DuPont™ Tychem® 4000.

Moveable lens and airduct positioning to accommodate for different facial features and optical aids.

Customizable head suspension system includes an adjustable ratchet at the back and over-the-head straps to allow for a secure, individualized fit.

Breathing tube easily attaches to respirator and swivels to eliminate tangles. Centralized location ensures even weight distribution.



\*From local and globally sourced components.



T200™ RESPIRATORS | 12 |

### CUSTOMIZABLE LAYOUT

Customize the internal layout with four adjustable head harness points and the moveable lens and air duct system to suit your needs.



1-866-494-4599 | rpbsafety.com



# T200™ PACKAGES









T200™ | 12 | RESPIRATORS

T200™  
 Head Harness Assembly  
 Tychem® 2000 Face Seal  
 PX5® PAPR  
 PX5® Breathing Tube  
 Part # 17-208-22



RESPIRATORS | 12 | T200™

For more information please visit [rpb-safety.com/t200](http://rpb-safety.com/t200)  
 Other packages include:

- |  |  |  |   |  |  |
|--|--|--|---|--|--|
| <p>HX5™ PAPR</p>  | <p>C40™ Climate Control Device</p>  | <p>Constant Flow Valve</p>  | <p>Gas Cartridge/Filter</p>  | <p>Hoods</p>  | <p>Backpack Assembly</p>  |
|--|--|--|---|--|--|

# T200™ PARTS

Head Harness Assembly  
Part # 15-841



Ratchet Assembly  
Part # 16-530



Lens Mounts (pair)  
Part # 17-513



Brow Pad  
Part # 16-526



Quiet-Slim™ Earmuffs  
Part # 18-524



Bump Cap  
(includes Comfort and Brow Pad  
and Front Strap)  
Part # 15-850



Clear-Vision Cassette Lens  
(7 layers, for face seal hoods)  
Part # 17-811



Clear-Vision Cassette Lens  
(7 layers, for full length hoods)  
Part # 17-817



Peel-off Lens  
(pk 50, for full length hoods)  
Part # 17-815



Air Duct Assembly  
(includes 17-513)  
Part # 15-860



Air Duct Assembly  
Part # 15-861



Bump Cap  
(includes Comfort Pad)  
Part # 15-855



Short Breathing Tube  
for Backpack Assembly  
Part # 04-841



PX5® Breathing Tube  
Part # 04-831



SAR Breathing Tube  
Part # 04-833  
(previously 04-830)



# T200™ PARTS

Tychem® 2000 Face Seal  
Part # 17-722



Tychem® 2000 Full Hood  
Part # 17-712



Tychem® 4000 Full Hood with Sealed Seams  
Part # 17-713



Tychem® Breathing Tube Cover  
(Breathing Tube not included)  
Part # 04-852

Short Tychem® Breathing Tube Cover  
(Breathing Tube not included)  
Part # 04-872



Tychem® 2000 Shoulder Length Hood with Face Seal  
Part # 17-732



# T150™ SERIES

SUPPLIED AIR PROTECTION



*Protecting you for life's best moments.*

# T150™ SERIES



## SUPPLIED AIR PROTECTION

The T150 provides a panoramic view, while protecting against harmful hazards found across industrial painting applications.

Manufactured from polycarbonate, making the T150 robust, yet comfortable to wear for all day protection. Featuring an adjustable six-point harness and thermoplastic (TPR) face seal that fits perfectly to the contours of your face, creating an airtight seal. The panoramic lens has been specially treated to prevent fog, scratches and acid wear and tear.

### APPLICATIONS INCLUDE

- Spray painting and coating
- Pharmaceutical manufacturing
- Chemical, pesticide and materials handling
- Chemical stripping
- Waste management.

The comfortable nylon mesh head harness is adjustable for a secure fit, attaching via six fast release buckles.



### BOOST PRODUCTIVITY

Protect the main lens from chemical splash, overspray and dust with the peel-off protective lenses. Pre-folded tabs ensure you can quickly tear off just one layered lens at a time.

1-866-494-4599 | [rpb.com](http://rpb.com)



ISO9001  
CERTIFIED COMPANY

Panoramic visor enables an uncompromised field of view.

Soft silicone inner face seal fits comfortably over mouth and nose.

Polycarbonate lens protects face from overspray and debris. The acid-resistant coating allows the lens to be cleaned with thinners.

Thermoplastic (TPR) face seal guarantees a perfect fit.

Air distribution system provides anti-fog barrier to the inside of the lens.



T150™ SERIES | RESPIRATORS

T150™ SERIES | RESPIRATORS

# T150™ SERIES PACKAGES

T150™ SERIES - PACKAGES | RESPIRATORS



T150™ Series  
Nylon Mesh Harness  
Face Seal (TPR)  
Flow Control Valve  
SAR Breathing Tube  
Part # 11-902-C



Other packages include:

Constant Flow Valve



RESPIRATORS | T150™ SERIES - PACKAGES

# T150™ SERIES PARTS

Swivel Air Fitting Elbow  
Part # 03-032



Clamping Band  
Part # 11-913



SAR Breathing Tube  
Part # 03-031



SAR Breathing Tube Hose Washer  
(pk 5)  
Part # NV2023



Nylon Head Suspension  
Part # 11-934



Visor and Rubber Face Seal  
Part # 11-910



Visor and Valves  
Part # 11-914



Inhalation Valves  
Part # 11-912



Inner Face Seal  
Part # 11-911



Tear-off Lens (pk 50)  
Part # 11-924



T150™ SERIES - PARTS | 8 | RESPIRATORS

T150™ SERIES - PARTS | 8 | RESPIRATORS

# **AIR MONITORING FILTRATION & SUPPLY**

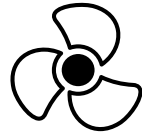
**PX5<sup>®</sup> PAPR**

**RESPIRATORY PROTECTION  
REIMAGINED**



*Protecting you for life's best moments.*

# PX5® PAPR



## RESPIRATORY PROTECTION REIMAGINED

The RPB PX5 changes the way people experience clean filtered air across multiple industries – from medical and chemical settings, through to the profoundly harsh environments of foundries.

The PX5 is the result of years of product refinement, designed with new functional capabilities that increase your ability to perform, while enhancing your experience of comfort. The PX5 redefines what it means to be a powered air purifying respirator.

Weighing just 2.55lbs (1.16kg) with the HEPA cartridge/filter fitted, and between 3.65lbs (1.65kg) and 3.75lbs (1.7kg) with a gas cartridge/filter fitted, the PX5 allows you to get more out of your day by reducing the effects of fatigue. Through strategically distributing its weight with its vertical mounting position and support from our flexi-belt system, the PX5 contours to your body for maximized comfort and stability.

With sleek considered surfaces, quick release mount lock system and certification for IP65 in use and IP67 with cleaning kit in place, the PX5 enables you to efficiently disinfect the unit, reducing downtime and ensuring the system is ready to protect you again.

The PX5 is truly the hallmark of powered air purifying respirator capabilities and their practical application.



Only in conjunction with approved respirator.

CE 2797

EN12941:1998 +A2:2008  
TH3/2/1 P R SL  
RESPIRATORY PROTECTION  
Only in conjunction with approved respirator.  
See instruction manual for protection levels.



BSI Certified Product  
AS/NZS 1716:2012  
BMP# 714303  
RESPIRATORY PROTECTION

US and Global patents pending.

### USER INTERFACE

Intuitive LED user interface indicates airflow, fan speed and battery level.

1-866-494-4599 | [rpb-safety.com](http://rpb-safety.com)

Weighing just 2.55lbs (1.16kg) with the HEPA cartridge/filter fitted, and between 3.65lbs (1.65kg) and 3.75lbs (1.7kg) with gas cartridge/filter fitted, the sleek, lightweight, compact design maximizes your experience of comfort.

The PX5 unit attaches to our flexi-belt system (fitted with the decon easy clean belt) via our intuitive vertical mount lock system. The unit easily removes for quick and simple decontamination process. Backpack option available for applications that require a greater range of movement and work across varied angles.



\*From local and globally sourced components.

Ingress Protection - With a completely sealed housing, the PX5 has been certified to IP65 rating in use and certified to IP67 rating with cleaning kit in place.

Cartridge/Filter Safety - The cartridge/filter door cannot mount to the unit unless a cartridge/filter is fixed in place.

HEPA cartridge/filter - removes up to 99.97% of particulates down to 0.12 microns. Gas cartridges/filters protects against organic vapor exposure. Replace the pre-filter daily to extend the life of the main cartridge/filter.



OV/AG/HE, Multi-Gas/HE, A2P, ABE1P & ABEK1P Cartridges/Filters



HEPA Cartridge/Filter

Visual, audible and vibrating alarms alert you when the battery level is low, or when airflow falls below the minimum requirements due to the filter needing replacing or when airflow is obstructed.

Sealed inside the unit during operation, the long-life lithium-ion battery is protected from moisture when decontaminating and will not disconnect or bump off while operating.



ISO9001  
CERTIFIED COMPANY

# PX5® PAPR PACKAGES



**PX5® PAPR**  
 2" Easy Clean Belt Assembly  
 Belt Support Bracket  
 Mountable Charger and Battery  
 Flow Meter  
 (Breathing Tube ordered separately)  
**Part # 03-801**



For more information please visit [rpbsafety.com/px5](http://rpbsafety.com/px5)  
 Other packages include:

- |   |   |   |   |   |
|---|---|---|---|---|
| Spark Arrestor  | Gas Cartridge/Filter  | Cables  | FR Belt   | Backpack Assembly   |
|  |  |  |  |  |

PX5® PAPR - PACKAGES | 19 | AIR MONITORING FILTRATION & SUPPLY

AIR MONITORING FILTRATION & SUPPLY | 27 | PX5® PAPR - PACKAGES

# PX5® PAPR PARTS

Fan Housing  
Part # 03-810



Battery Door Hinge  
(retainer)  
Part # 03-818



Battery Door Seal  
Part # 03-817



Battery Door Assembly  
(includes 03-818)  
Part # 03-815



Door Cover  
Part # 03-812



Pre-filter (pk 10)  
Part # 03-890



Spark Arrestor  
Part # 03-891



HEPA Cartridge/Filter  
Part # 03-892



HEPA Cartridge/Filter Door  
Part # 03-813



OV/AG/HE Gas Cartridge/Filter  
Part # 03-893  
Combination HEPA A2P  
Gas Cartridge/Filter  
Part # 03-893-A2  
Multi-Gas/HE Cartridge/Filter  
Part # 03-894  
Combination HEPA ABE1P  
Gas Cartridge/Filter  
Part # 03-894-ABE  
Combination HEPA ABEK1P  
Gas Cartridge/Filter  
Part # 03-895-ABEK



Gas Cartridge/Filter Door  
Part # 03-814



# PX5® PAPR PARTS

Belt Support Mount  
Part # 03-811



PAPR Breathing Tube  
(for Z-Link®, Z4®, Nova 3®,  
T-Link® and T200™)  
Part # 04-831



PAPR Breathing Tube  
(for Z3™)  
Part # 04-832



2" Belt Assembly - FR  
Part # 07-765-FR



2" Belt Assembly - Easy Clean  
Part # 07-765-DC



Flow Meter  
Part # 03-819



FR Backpack Assembly  
Part # 03-822-FR



Short Breathing Tube  
for Backpack Assembly  
Part # 04-841



Complete Charger Kit  
US Part # 03-851-DC  
AU/NZ Part # 03-851-DC-AUNZ  
EU/UK Part # 03-851-DC-EUUK



Battery  
Part # 03-855



Easy Clean Backpack Assembly  
Part # 03-822-DC



Power Cable  
US Part # 09-021  
AU/NZ Part # 09-021-AU  
EU Part # 09-021-EU  
UK Part # 09-021-UK



PX5® PAPR - PARTS | AIR MONITORING FILTRATION & SUPPLY

PX5® PAPR - PARTS | AIR MONITORING FILTRATION & SUPPLY

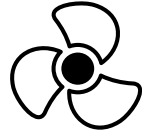
# HX5™ PAPR

**SIMPLIFYING YOUR  
PROTECTION**



*Protecting you for life's best moments.*

# HX5™ PAPR



## SIMPLIFYING YOUR PROTECTION

With the simple press of a button, experience clean filtered air in an instant as the HX5 removes up to 99.97% of particles down to 0.12 microns, taking care of your breathing so you can focus on the task at hand.

Through its robust housing, the HX5 is able to withstand the physical demands of multiple applications and is certified to IP53, protecting the unit from dust, rainfall and moisture when cleaning and disinfecting. The HX5's design enhances comfort through its supportive vertical mounting position, evenly distributing its weight to reduce the impact of aches, strains and fatigue.



Only in conjunction with approved respirator.

HX5™ PAPR | 15 | AIR MONITORING FILTRATION & SUPPLY



### USER INTERFACE

One touch system provides high quality respiratory protection with a single press of a button.

1-866-494-4599 | [rpbafety.com](http://rpbafety.com)



With two mounting options (belt and backpack) and two materials (decon and FR) to chose from, the HX5 allows you to work across multiple applications with complete freedom of movement.

Visual and audible alarms alert you when the battery level is low, or when airflow falls below the minimum requirements due to the filter needing replacing or when airflow is obstructed.



\*From local and globally sourced components.



Ingress protection – The HX5 is certified to IP53, allowing the unit to be wiped down for cleaning or disinfecting purposes as well as withstanding dust and rainfall.

Filter Safety - The filter door cannot mount to the unit unless a filter is fixed in place.



HEPA Cartridge/Filter

HEPA filter removes up to 99.97% of particulates down to 0.12 microns. Replace the pre-filter daily to extend the life of the main cartridge/filter.



Sealed inside the unit during operation, the long-life lithium-ion battery is protected and will not disconnect or bump off while operating.

Weighing just 2.55lbs (1.16kg) with the HE filter fitted, the sleek, lightweight, compact design maximizes your experience of comfort. Through vertical mounting, the HX5 contours to you and the flexi-belt system ensures its support.

ISO9001  
CERTIFIED COMPANY

AIR MONITORING FILTRATION & SUPPLY | 15 | HX5™ PAPR

# HX5™ PAPR PACKAGES



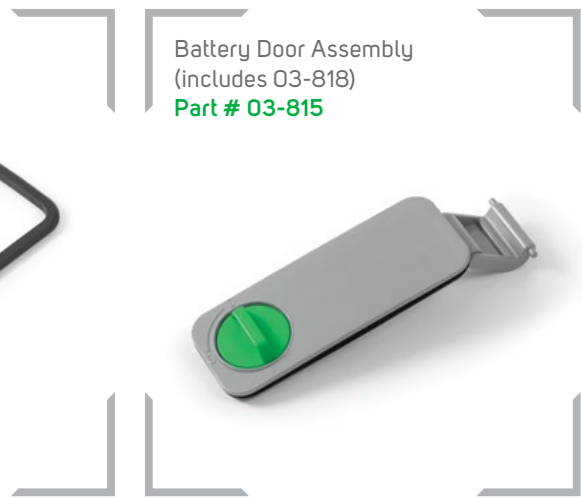
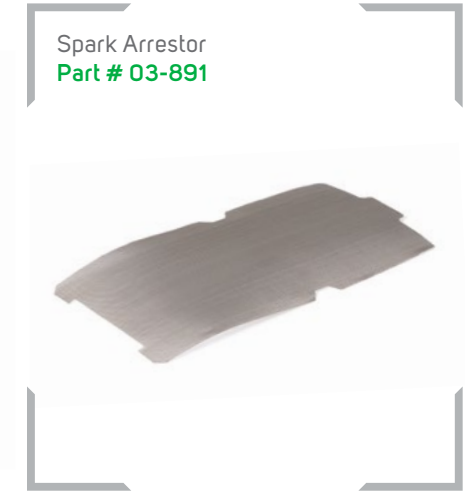
HX5® PAPR  
 2" Easy Clean Belt  
 Belt Support Mount  
 Battery and Charger  
 Flow Meter  
 (Breathing Tube ordered separately)  
**Part # 03-601**



For more information please visit [rpbafety.com/hx5](http://rpbafety.com/hx5)  
 Other packages include:



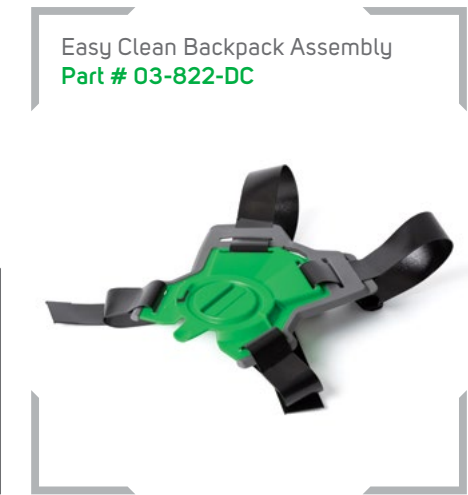
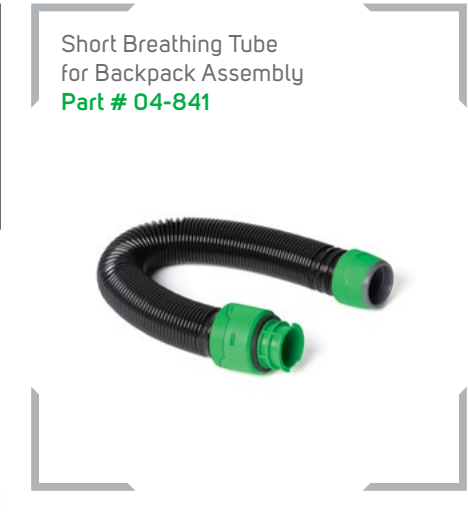
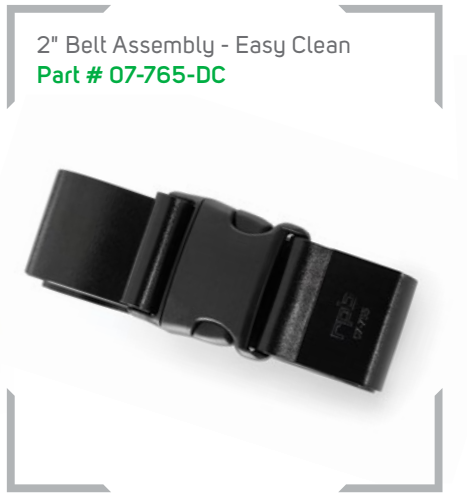
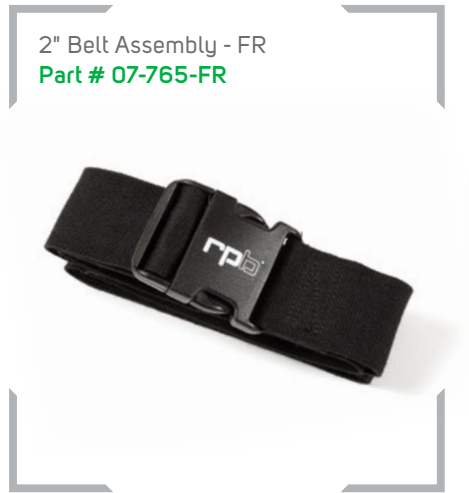
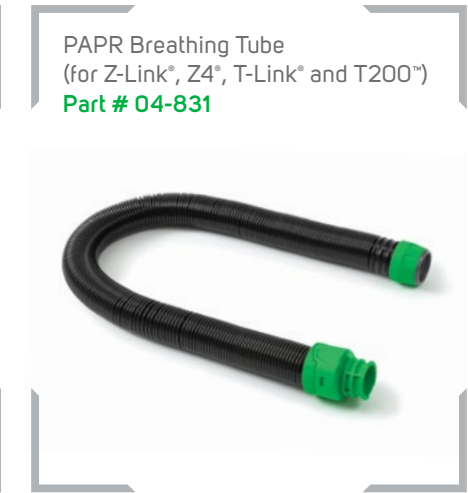
# HX5™ PAPR PARTS



HX5™ PAPR - PARTS | 8 | AIR MONITORING FILTRATION & SUPPLY

AIR MONITORING FILTRATION & SUPPLY | 8 | HX5™ PAPR - PARTS

# HX5™ PAPR PARTS



HX5™ PAPR - PARTS | AIR MONITORING FILTRATION & SUPPLY

AIR MONITORING FILTRATION & SUPPLY | HX5™ PAPR - PARTS

# GX4<sup>®</sup> GAS MONITOR

**MULTIPLE GAS  
DETECTION CAPABILITIES**



*Protecting you for life's best moments.*

# GX4® GAS MONITOR



## MULTIPLE GAS DETECTION CAPABILITIES

The RPB GX4 Gas Monitor gives you complete confidence that the supplied/compressed air you and your employees breathe is safe. By detecting when there are dangerous levels of toxic gases, this monitor ensures you'll be protected for life's best moments.

Gases such as carbon monoxide are invisible to all the human senses yet are commonly found in industrial premises worldwide. Although low-level exposure may not be immediately fatal, ongoing contact at low levels has a cumulative effect, causing serious illness and long-term health concerns.

The GX4 detects multiple gases simultaneously. With smart device and cloud integration capabilities included this enables you to view your air quality from any device, in real time.

Connect to the GX4 from your laptop, tablet, phone or even network to view real time data, download logs, alter alarm points and much more.



### GAS SENSORS

Our range of pre-calibrated gas sensors have been updated to fit an improved sensor while incorporating an ergonomic design for simple removal and replacement. Available in CO, O2 and H2S, all with a 2-year shelf life.



1-866-494-4599 | [rpbsafety.com](http://rpbsafety.com)

ISO9001  
CERTIFIED COMPANY

Illuminated display that shows real time data.

Complete quick and easy calibration checks with no set points required.

103 DBA staccato alarm.

Monitor up to four gases simultaneously.

Robust power inlet.

Push release air inlet.

Sturdy mounting bracket.

Cartridges can be easily removed and replaced.

Strong nylon ABS case that will handle the harshest of conditions.



From local and globally sourced components.



AIR MONITORING FILTRATION & SUPPLY | GX4® GAS MONITOR

# GX4® GAS MONITOR PACKAGES

GX4® GAS MONITOR - PACKAGES | 19 | AIR MONITORING FILTRATION & SUPPLY



## GX4® GAS MONITOR

3 Blank Sensor Cases, CO Sensor, Air Supply Hose, External Flow Regulator, Power Adapter Pack and Mounting Bracket  
CO Cartridge 10ppm with US Power Adapter Pack

**Part # 08-400-01**

CO Cartridge 10ppm with AU Power Adapter Pack

**Part # 08-400-01-AU**

CO Cartridge 10ppm with UK Power Adapter Pack

**Part # 08-400-01-UK**

CO Cartridge 5ppm with US Power Adapter Pack

**Part # 08-400-02**

CO Cartridge 5ppm with UK Power Adapter Pack

**Part # 08-400-02-EU**



For more information please visit [rpbafety.com/gx4](http://rpbafety.com/gx4)

Other packages include:

12 V Cable with  
Battery Clips



AIR MONITORING FILTRATION & SUPPLY | 20 | GX4® GAS MONITOR - PACKAGES

# GX4® GAS MONITOR PARTS

Gas Sensor Cartridges  
 Carbon Monoxide 10ppm **Part # 08-420-01**  
 Carbon Monoxide 5ppm **Part # 08-420-02**  
 Hydrogen Sulfide 10ppm **Part # 08-420-03**  
 Oxygen 19.5% - 23% **Part # 08-420-04**



Blank Sensor Case  
**Part # 08-420**



Power Cable  
 US **Part # 09-021**  
 AU/NZ **Part # 09-021-AU**  
 UK **Part # 09-021-UK**  
 EU **Part # 09-021-EU**



Power Adapter Pack  
 US **Part # 08-430**  
 AS/NZ **Part # 08-430-AU**  
 UK **Part # 08-430-UK**  
 EU **Part # 08-430-EU**



12 Volt Cable with Battery Clips  
**Part # 08-431**



Air Supply Hose and  
 One Touch Connector  
**Part # 08-428**  
 with RZ Fittings  
**Part # 08-428-RZ**



Heavy Duty Field Case  
**Part # 08-424**



Heavy Duty Field Case  
 (includes Battery and Charger)  
**Part # 08-427**



Mounting Bracket  
 (pair, includes screws)  
**Part # 08-425**



Sensor Manifold Tube  
**Part # 08-422**



Aluminum Wall Bracket  
**Part # 08-231**



GX4® GAS MONITOR - PARTS | 9 | AIR MONITORING FILTRATION & SUPPLY

AIR MONITORING FILTRATION & SUPPLY | 10 | GX4® GAS MONITOR - PARTS

# GX4® GAS MONITOR PARTS

M5 Inlet Filter,  
Sintered Brass  
Part # 08-429



Auxiliary Strobe and Alarm Tower  
with 50' Cable  
Part # 08-436



Auxiliary Cable 50'  
with Bare End  
Part # 08-434



Calibration Adapter  
Part # 08-450



Calibration Flow Regulator  
1.5 SLPM (includes 08-450,  
for Zero Air and CO gas bottles)  
Part # 08-451  
(for H<sub>2</sub>S gas bottles)  
Part # 08-452



Zero Air (20.9% Oxygen in Nitrogen)  
Part # 08-460  
CO 20ppm (20ppm Carbon  
Monoxide in Air)  
Part # 08-461  
H<sub>2</sub>S 20ppm (20ppm Hydrogen  
Sulfide in Nitrogen)  
Part # 08-462



Auxiliary Strobe Light  
with 50' Cable  
Part # 08-435



External Flow Regulator  
Part # 08-470  
With RZ Fittings  
Part # 08-470-RZ



GX4® GAS MONITOR - PARTS | 17 | AIR MONITORING FILTRATION & SUPPLY

AIR MONITORING FILTRATION & SUPPLY | 17 | GX4® GAS MONITOR - PARTS

# RADEX<sup>®</sup> AIRLINE FILTER

SUPERIOR FILTRATION



Protecting you for life's best moments.

# RADEX® AIRLINE FILTER



## SUPERIOR FILTRATION

The RPB Radex Airline Filter improves the quality of the air you are breathing. Exceeding industry filtration standards, the Radex gives you the confidence that you won't be breathing contaminated air known to lead to major health issues. With the Radex, it's our commitment to protect you for life's best moments.

The Radex is fitted with a large capacity, 6-stage filter cartridge that removes moisture, odor and particulates to 0.5 micron from the compressed air stream, providing clean, breathable air. With a unique twist-and-lock wall and floor mounting system, the Radex is adaptable to all workplaces.

An optional auto drain valve is available to fit to your filter that continually removes moisture from the filter housing, increasing the lifespan of the filter cartridge.

### 6 OUTLET SYSTEM

Upgrade to the 6-outlet system to provide filtration to six separate airlines from one filter.

1-866-494-4599 | [rpb.com](http://rpb.com)



ISO9001  
CERTIFIED COMPANY

Quick disconnect coupler that is compatible with brands including Aro, CEJN, Dixon and Rectus.

150 psi safety pressure relief valve.

Claw coupler port (optional).

Outlet pressure regulator provides the ability to adjust air pressure. Range 0-125 psi (04-900 2 outlet unit only).

Claw coupler port (optional).

Replacement filter cartridges have a replacement date sticker for maintenance scheduling.

Strong, robust housing.

Fitted with brass drain tap.

Wall and floor mounting system.



From local and globally sourced components.



# RADEX® AIRLINE FILTER PACKAGES



RADEX® AIRLINE FILTER  
Part # 04-900



For more information please visit [rpb.com/radex](http://rpb.com/radex)

# RADEX® AIRLINE FILTER PACKAGES

RADEX® AIRLINE FILTER  
 6-outlet system **Part # 04-906**  
 with RZ Fitting **Part # 04-906-RZ**



RADEX® COMPLETE BREATHING AIR SYSTEM  
 GX4® Gas Monitor  
 Micro Mist Filter 1/2"  
 Mainline Pre-filter  
 Replacement Radex® Filter Cartridge  
 Brass Nipple 1/2"  
 Aluminum Wall Bracket  
**Part # 04-907**



For more package options please visit [rpbafety.com/radex](http://rpbafety.com/radex)

For more package options please visit [rpbafety.com/radex](http://rpbafety.com/radex)

RADEX® AIRLINE FILTER - PACKAGES | 18 | AIR MONITORING FILTRATION & SUPPLY

AIR MONITORING FILTRATION & SUPPLY | 18 | RADEX® AIRLINE FILTER - PACKAGES

# RADEX® AIRLINE FILTER PARTS

Micro Mist Filter Element  
(for 04-925)  
Part # 04-930



Micro Mist Filter 1/2"  
Part # 04-925



Filter Element  
(for 04-927)  
Part # 04-929



Mainline Pre-filter  
Part # 04-927



Auto Drain Unit  
Part # 04-924



Auto Drain Assembly  
(for 04-924)  
Part # 04-931



Replacement Filter Cartridge (generic)  
Part # AFC100



O-Ring (set of 2)  
Part # 04-919



Base Mount  
Part # 04-923



Replacement Radex®  
Filter Cartridge  
Part # APF3100



# RADEX® AIRLINE FILTER PARTS

Pressure Relief Valve (150 psi)  
Part # 04-916



Pressure Regulator  
Part # 04-914



3/8" Brass Tee  
Part # 04-912



Parts Bag for Radex (04-900)  
(includes 2x 04-911, 04-912, 04-914, 04-915,  
04-916 and replacement date sticker)  
Part # 04-932



1/4" Coupler 3/8" FNPT  
Part # 04-911  
with Schrader Fitting  
Part # 03-042-CF



Six Outlet Filter Lid  
Part # 04-961



Six Outlet Upgrade Kit  
Part # 04-960  
with RZ Fitting  
Part # 04-960-RZ



Filter Lid (for 04-900)  
Part # 04-918



Pressure Gauge  
Part # 04-915

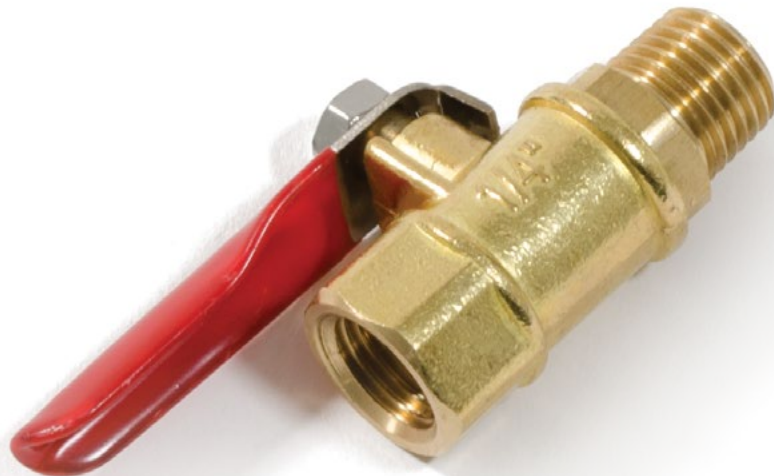


Super High Flow Regulator  
(includes 04-915)  
Part # 04-962



# RADEX® AIRLINE FILTER PARTS

Brass Drain Tap  
Part # 04-922



3/8" Brass Cap  
Part # 04-913



1" NPT x 3/4" BSP Bushing  
Part # 04-967



Brass Elbow  
Part # 04-928



Claw Coupler  
Part # 04-951



1" x 1/2" Reducing Nipple  
Part # 04-926



3/8" Brass Nipple  
Part # 04-917



1" NPT Hex Connector  
Part # 04-966



Bolt, Nut and Washer (set of 4)  
Part # 04-920



Six Outlet Manifold  
Part # 04-965



1/4" Coupler 3/8" MNPT  
(to fit 04-965 Manifold)  
Part # 04-964



1/2" NPT Hex Connector  
Part # 04-952



RADEX® AIRLINE FILTER - PARTS | 5 | AIR MONITORING FILTRATION & SUPPLY

AIR MONITORING FILTRATION & SUPPLY | 6 | RADEX® AIRLINE FILTER - PARTS

# RADEX® AMBIENT AIR PUMP PACKAGES

AMBIENT AIR PUMP  
One Person  
Part # 06-100



# RADEX® AMBIENT AIR PUMP PARTS

Inlet Filter Assembly  
(includes 9700-01)  
Part # 9700-08



Pressure Relief Valve  
Part # 9700-03



Inlet Filter Element  
Part # 9700-01



1/2" Hansen Coupler  
Part # 9700-72AD



Pressure Gauge  
Part # 9700-04



Exhaust Filter Element  
Part # 9700-02



Exhaust Filter Canister  
Part # 9700-15



RADEX® AMBIENT AIR PUMP - PACKAGES | AIR MONITORING FILTRATION & SUPPLY

AIR MONITORING FILTRATION & SUPPLY | RADEX® AMBIENT AIR PUMP - PARTS

# AIR SUPPLY

Protecting you for life's best moments.



# AIR SUPPLY PARTS

Schrader Coupler to 1/4" NPT Female  
Part # 03-042-CF



100' Breathing Air Supply Hose  
3/8" Diameter (includes Quick Release Fittings)  
Part # NV2027  
with RZ Fittings  
Part # 04-352-100-RZ  
with Schrader Fitting  
Part # 04-342-100  
CE approved  
Part # 04-322-100



Schrader Plug to 1/4" NPT Female  
Part # 03-042-PF



50' Breathing Air Supply Hose  
3/8" Diameter (includes Quick Release Fittings)  
Part # NV2029  
with RZ Fittings  
Part # 04-352-50-RZ  
with Schrader Fitting  
Part # 04-342-50  
CE approved  
Part # 04-322-50



Schrader Twist Lock 3/8" MNPT Plug  
Part # 03-043-PM



25' Breathing Air Supply Hose  
3/8" Diameter (includes Quick Release Fittings)  
Part # NV2028  
with RZ Fittings  
Part # 04-352-25-RZ  
with Schrader Fitting  
Part # 04-342-25  
CE approved  
Part # 04-322-25



15' Recoil Breathing Air Supply Hose 3/8IN Diameter  
RPB® Standard Coupler Part # 04-412-15  
with Schrader Coupler Part # 04-442-15  
25' Recoil Breathing Air Supply Hose 3/8IN Diameter  
RPB® Standard Coupler Part # 04-412-25  
with Schrader Coupler Part # 04-442-25



Dixon Coupler - Low Pressure  
Part # NV2039



Quick Release Coupler  
1/4" Female Thread Part # NV2025  
CE approved Part # 03-022-CF



100' Breathing Air Supply Hose  
1/2" Diameter (includes Quick Release Fittings)  
Part # NV2036  
50' Breathing Air Supply Hose  
1/2" Diameter (includes Quick Release Fittings)  
Part # NV2035



\*(Note: for use with low pressure air pumps)

# C40™ CLIMATE CONTROL DEVICE

CONTROL YOUR  
ENVIRONMENT

*Protecting you for life's best moments.*

# C40™ CLIMATE CONTROL DEVICE



## CONTROL YOUR ENVIRONMENT

The RPB C40 is a robust climate control device, designed to give you ultimate comfort when using your RPB supplied air respirator.

Renowned for our design innovation, the C40 pushes respiratory comfort to the next level. The C40 ensures you are protected for life's best moments by maintaining you at your optimum body temperature, so you don't suffer from heat exhaustion or chilling. With its simple sleek design, cool the incoming air by up to 52°F (29°C) or alternatively, heat it by up to 33°F (18°C) all by the slide of a lever. This device is the next step for maximizing your productivity and safety.



Only in conjunction with approved respirator.

CE 2797

EN14594:2005 3B/4B  
RESPIRATORY PROTECTION  
Only in conjunction with approved respirator.

### LOW MAINTENANCE

Low maintenance required. The air silencers are the only parts that need cleaning or replacing.



1-866-494-4599 | [rpb-safety.com](http://rpb-safety.com)

ISO9001  
CERTIFIED COMPANY

Easily control your temperature with the slide of a lever.

Increase or decrease the airflow by turning the flow control dial.

Durable FR or easy clean belt.

Choose from a range of plugs to suit your application.

Air inlet swivels 360° to ensure the device sits comfortably on your hip.

Made from lightweight, robust materials - weighs 11.6 ounces (329g), includes belt.

MADE  
IN THE USA



From local and globally sourced components.



AIR MONITORING FILTRATION & SUPPLY | C40™ CLIMATE CONTROL DEVICE

# C40™ CLIMATE CONTROL DEVICE ASSEMBLY

C40™ CLIMATE CONTROL DEVICE - ASSEMBLY | 19 | AIR MONITORING FILTRATION & SUPPLY



1-866-494-4599 | [rpbsafety.com](http://rpbsafety.com)

C40™ Climate Control Device  
NIOSH approved **Part # 03-501**  
CE approved **Part # 03-502**  
with RZ Fitting **Part # 03-501-RZ**  
with Schrader **Part # 03-504**



For more information please visit [rpbsafety.com/c40](http://rpbsafety.com/c40)

AIR MONITORING FILTRATION & SUPPLY | 19 | C40™ CLIMATE CONTROL DEVICE - ASSEMBLY



# C40™ CLIMATE CONTROL DEVICE PARTS

Top Case Assembly  
Part # 03-521



Bottom Case  
Part # 03-514



Silencers (pair)  
Part # 03-537



1/4" Plug to 1/4" NPT  
Male Swivel  
Part # 03-012-PMS



Belt Loop  
Part # 03-539



Exhaust Assembly  
Part # 03-522



Silencer Assembly  
Part # 03-526



1/4" Safety Plug to  
1/4" NPT Male Swivel  
Part # 03-022-PMS



Inlet Collar  
Part # 03-536



U Tube Assembly  
Part # 03-510



Tychem® Cover  
Part # 04-862



2" Belt with Nylon Buckle  
Part # 07-765  
2" NOMEX® Belt with Acetal Buckle  
Part # 07-765-FR



Schrader Twist Lock MNPT  
Swivel Plug  
Part # 03-042-PMS



1/4" Male Thread  
RZ Coupler Swivel Plug  
Part # 03-052-PMS-RZ



C40™ CLIMATE CONTROL DEVICE - PARTS | 8 | AIR MONITORING FILTRATION & SUPPLY

AIR MONITORING FILTRATION & SUPPLY | 8 | C40™ CLIMATE CONTROL DEVICE - PARTS

**FLOW CONTROL**

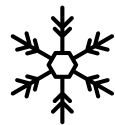
**ECONOMIC  
CLIMATE CONTROL**



*Protecting you for life's best moments.*

## ECONOMIC CLIMATE CONTROL

The RPB Cold and Hot Air Tubes are part of RPB Safety's range of economic climate control assemblies. They significantly cool and heat your air supply for your optimum performance and comfort when operating in climate and environmental extremes.



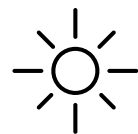
### COLD AIR TUBE

#### RPB 4000-01 COLD AIR TUBE ASSEMBLY

Manufactured from robust engineering grade plastic and can cool compressed breathing air supply by as much as 32°F (18°C) prevent heat exhaustion.



Only in conjunction with approved respirator.



### HOT AIR TUBE

#### RPB® 4000-20 HOT AIR TUBE ASSEMBLY

Manufactured from robust engineering grade plastic and can heat compressed breathing air supply by as much as 30°F (17°C) preventing chilling.



Only in conjunction with approved respirator.

All parts are easily removable for maintenance and cleaning.

Strong nylon belt.

Regulator to control air temperature and airflow.

Tough engineering plastic designed for harsh conditions.

MADE  
IN THE USA



From local and globally sourced components

# FLOW CONTROL PARTS

Cold Air Tube Assembly  
 NIOSH approved **Part # 4000-01**  
 CE approved, includes Temperature Shield and Swivel Connector  
**Part # 4000-01CE**  
 Cold Air Tube Assembly GHT Thread **Part # 4000-02-GHT**



Cool Air Tube Body  
**Part # 4000-05B**



Hot Air Tube Body  
**Part # 4000-05R**



Retainer Nut  
**Part # 4000-17**



Flow Reducer  
**Part # 4000-14**



Cold Air Spinner  
**Part # 4000-04**



Hot Air Spinner  
**Part # 4000-13**



Hot Air Tube Assembly  
 NIOSH approved **Part # 4000-20**  
 CE approved **Part # 4000-20CE**



Silenced Cool  
 Air Tube Assembly  
**Part # 4000-40**



Breaker  
**Part # 4000-07**



Outlet Valve Complete Assembly  
**Part # 4000-18**



FLOW CONTROL - PARTS | 24 | AIR MONITORING FILTRATION & SUPPLY

AIR MONITORING FILTRATION & SUPPLY | 25 | FLOW CONTROL - PARTS

# FLOW CONTROL PARTS

Constant Flow Valve Assembly  
NIOSH approved **Part # 03-101**  
CE approved **Part # 03-102**



Regulator Assembly  
**Part # 4000-11**



Outlet Valve (for 4000-40)  
**Part # 4000-38**



Outlet Valve  
**Part # 4000-15**



Regulator Body  
**Part # 4000-08**



Top Thread Cap BSP Thread  
(for 4000-01)  
**Part # 4000-03**



Flow Control Valve  
NIOSH approved **Part # NV2016**  
CE approved **Part # 03-022-PM**  
(previously NV2016CE)



Constant Flow Valve  
- Low Pressure  
**Part # 03-106**



Spindle and Knob  
**Part # 4000-09**



Top Thread Cap GHT Thread  
(for 4000-20)  
**Part # 4000-03GHT**



# FLOW CONTROL PARTS

Safety Quick Release  
Tail 1/4" Male Thread  
Part # 03-022-PM  
(previously NV2032CE)



DQC SHD-Series Schrader Plug  
to 1/4" NPT Male  
Part # 03-042-PM



Schrader Twist Lock  
3/8 MNPT Plug  
Part # 03-043-PM



Adapter 1/2" Low Pressure Plug  
to 3/8" NPT Male Thread  
Part # NV2034



Adapter 1/4" RPB® Plug to 3/8"  
NPT Male Thread  
Part # 03-013-PM  
(previously 03-111)



Quick Release Tail  
1/4" Male Thread  
Part # 03-012-PM  
(previously 4000-06)



Quick Release Tail  
1/4" Male Thread with RZ Fitting  
Part # 03-052-PM-RZ



1.5" Nylon Belt  
Part # NV2022



Silencer Disc  
Part # 4000-16



Silencer Disc - Brass  
Part # 4000-16B



Locking Screw  
Part # 4000-10



Temperature Shield  
Part # 4000-12



FLOW CONTROL - PARTS | 20 | AIR MONITORING FILTRATION & SUPPLY

AIR MONITORING FILTRATION & SUPPLY | 20 | FLOW CONTROL - PARTS

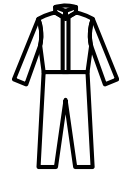
# SAFETY ESSENTIALS

# BLAST SUIT

INTEGRATED COMFORT  
AND PROTECTION



# BLAST SUIT



## INTEGRATED COMFORT AND PROTECTION

Abrasive blasting creates a hazardous environment not only to your respiratory system, but to anything that is exposed. Integrating comfort and protection into one, the RPB Blast Suit has been crafted to ensure you can perform your role and make it home safely every day.

The blast suit features triple stitching for durability and replaceable knee pads for extra comfort and protection.

Blast Suit is available in size range Small - XXXXL.

Part # 07-755-(S-XXXXL)

### RPB® Blast Suit Size Chart

SIZE	S	M	L	XL	XXL	XXXL	XXXXL
CHEST	44	50	51	52	54	55	59
WAIST	43	46	48	52	55	56	60
HIP	41	52	58	60	62	62	64
TOTAL LENGTH	63	64	68	68	69	72	74
INSEAM	27	29	29	30	30	32	35

All measurements are in inches. Suits are oversized to fit over clothing. Waist is elastic, measured fully stretched. Drop crotch, inseam may be longer than measured. Total length is measured from the shoulder to the bottom of the suit.

### ADDITIONAL COMFORT

Sore knees from kneeling? Try the RPB unique knee pad which insert into the Blast Suit's internal knee pockets for maximum comfort.



1-866-494-4599 | [rpb-safety.com](http://rpb-safety.com)

ISO9001  
CERTIFIED COMPANY



Available in seven sizes.

Breathable cotton back designed to keep you cool.

Elasticated waist for a comfortable fit.

Heavy duty nylon for maximum protection to the front of your body and arms.

Elasticated wrists and adjustable ankle cuffs for a comfortable fit.

Optional knee pads.

Robust nylon zipper with protective cover.

SAFETY ESSENTIALS | 21 | BLAST SUIT



# SAFETY ESSENTIALS

ENHANCE YOUR  
PROTECTION



*Protecting you for life's best moments.*

# SAFETY ESSENTIALS



## ENHANCE YOUR PROTECTION

Complete your RPB protection with safety essentials that increase your safety, comfort and productivity.

**RPB Leather Gloves**  
The RPB Leather Gloves are made from premium quality leather with Kevlar® stitching for durability. They feature a double layer palm and extra leather strip on the outside for additional protection. The lining is soft and comfortable.

**Part # 07-701**



**Knee Pads (pair)**  
**Part # 07-761**



**Do-rag**  
The RPB Do-rag is made from soft, breathable cotton fabric, and features a sweat band to keep sweat out of your eyes when wearing a respirator.

**Part # 05-613**



**Head Sock (pk 10)**  
The RPB® Head Socks provide protection from overspray and dust.

**Part # 05-601**



**Quiet-Slim™ Earmuffs**  
**Part # 18-524**



**DISCONTINUED  
PRODUCT PARTS**

# T100™ SERIES

SYSTEM DISCONTINUED,  
PARTS STILL AVAILABLE.

## T100™ SERIES PARTS

Tychem® 2000 Hood  
Part # 07-110



Head Suspension  
Part # 07-920



Head Harness  
Mounting Clips (pk 2)  
Part # 07-121



Brow Pad  
(for 07-920, pk 5)  
Part # 07-924



Chin Strap  
(for 07-920)  
Part # 07-926



Peel-off Lens (pk 50)  
Part # 07-123



SAR Breathing Tube  
(includes 07-122)  
Part # NV2021F



Hose Clamp  
(Single Bond Nylon, 1-13/32)  
Part # 07-122



SAR Breathing Tube Hose Washer  
(pk 5)  
Part # NV2023



Protecting you for life's best moments.



# PX4 AIR® PAPR

SYSTEM DISCONTINUED,  
PARTS STILL AVAILABLE.

## PX4 AIR® PAPR PARTS

Pre-filter (pk 10)  
Part # 03-981



Spark Arrestor  
Part # 03-982



P100 Cartridge/Filter  
Part # 03-985



PX4 Air® Breathing Tube  
(for Z-Link®, Z4®, Nova 3® and T-Link®)  
(previously 04-835)  
Part # 04-837



Battery  
Part # 03-955



24 Volt Power Supply Unit  
US Part # 03-952  
AU/NZ Part # 03-952-AU  
EU Part # 03-952-EU  
UK Part # 03-952-UK



24 Volt Power Supply Unit  
Including Power Cable -  
US Part # 09-021  
AU/NZ Part # 09-021-AU  
EU Part # 09-021-EU  
UK Part # 09-021-UK



# FULL PARTS INDEX

# FULL PARTS INDEX



*Protecting you for life's best moments.*

## Z-LINK®

PAGE 18	PART #
PX5® Breathing Tube	04-831
SAR Breathing Tube (previously 04-830)	04-833
Short Breathing Tube for Backpack Assembly	04-841
Tychem® Breathing Tube Cover (Breathing Tube not included)	04-852
FR Breathing Tube Cover (Breathing Tube not included)	04-854
Aluminized Breathing Tube Cover (Breathing Tube not included)	04-855
Short Tychem® Breathing Tube Cover (Breathing Tube not included)	04-872
Short FR Breathing Tube Cover (Breathing Tube not included)	04-874
Short Aluminized Breathing Tube Cover (Breathing Tube not included)	04-875
Ultra Magnifying Lens 1.0	13-072-1
Ultra Magnifying Lens 1.5	13-072-1.5
Ultra Magnifying Lens 2.0	13-072-2
Ultra Magnifying Lens 2.5	13-072-2.5
Jaw Assembly (includes screws and 16-515)	16-514
Lens Seal	16-515
Earmuff Bracket (pair, includes screws)	16-516
Rear Cape Clip	16-518
Air Inlet Adapter	16-519
Side Padding System	16-520-S
Fit System (includes 16-520-S, 16-521, 16-522, 16-525, 16-526, 16-530 and 16-531)	16-520-T
Impact Absorber	16-521
Comfort Pad	16-522
Head Harness System Bracket and Air Deflector	16-525
Brow Pad	16-526
Side Padding Frames	16-527
Foam Side Pads	16-528
Ratchet Assembly	16-530
Head Harness (includes 16-530)	16-531
Visor (includes 16-612, 16-613, 16-614, 16-615, FS-04 and FS-17)	16-611
Pivot Assembly (includes 16-614, 16-516, 2pcs 16-615, FS-04 and 2pcs FS-17)	16-616
Welding Visor (includes ADF Lens)	16-670
Welding Visor (includes 16-672, 16-673 and 16-674)	16-671
Welding Lens Retainer	16-672
Weld Visor Attachment Clips	16-673
Welding Visor Frame	16-674
Radiant Heat Gold Visor (includes cover clip and retainer assembly)	16-675-GT
Radiant Heat Gold Visor - Gold IR5 (includes cover clip and retainer assembly)	16-675-GTIR5
Radiant Heat Visor - IR5 (includes cover clip and retainer assembly)	16-675-IR5
Weld Visor (includes 16-674, 16-877 and 16-672)	16-676
Zytec® FR Face Seal	16-711
Tychem® 2000 Face Seal	16-712
Zytec® FR Shoulder Cape	16-721

## Z-LINK® continued

PAGE 18	PART #
Tychem® 4000 Shoulder Cape	16-723
Aluminized Shoulder Cape	16-724
Aluminized Top Cover	16-744
Aluminized Rear Cover	16-754
Safety Lens Anti Fog/Anti Scratch	16-810
Safety Lens - Infrared (shade 5)	16-810-IR5
Safety Lens - Mirror Tinted Anti Fog	16-810-MT
Safety Lens - Smoke Tinted Anti Fog/Anti Scratch	16-810-ST
Safety Lens - Yellow Tinted Anti Fog/Anti Scratch	16-810-YT
Tear-off Lens (pk 50)	16-811
RPB ADF Lens	16-871
Welding Impact Lens (pk 10)	16-872
ADF Impact Lens - Aluminum Coated (pk 10)	16-872-AL
ADF Rear Lens (pk 10)	16-873
Protective Lens for ADF Impact Lens - Aluminum Coated (pk 10)	16-874
Magnifying Lens Holder	16-875
Weld Visor (includes 16-674, 16-877 and 16-672)	16-877
Rear Protective Lens for Fixed Shade Lens (pk 10)	16-878
Low Flow Indicator	16-930
SAR Breathing Tube Hose Washer (pk 5)	NV2023

## LINK ACCESSORIES

PAGE 30	PART #
Battery Charger	09-050
Battery	09-055
Push to Talk Button	09-913
Motorola Connection Cable (two-pin)	09-930
Motorola Connection Cable (multi-pin)	09-931
Motorola Connection Cable (multi-pin)	09-932
Kenwood Connection Cable (two-pin)	09-933
Motorola Connection Cable (multi-pin)	09-934
Motorola Connection Cable (single-pin)	09-935
Jaw Mount (for Z-Link® and Z4®, screw not included)	15-839
Earmuff Bracket (pair, includes screws)	16-516
Communication Retainer Clip	16-529
Vision-Link™ (includes 09-510-RAW, 16-918 and 15-839)	16-901
Light (Battery and Battery Charger not included)	16-910
Rear Cowling	16-913
Cowling Seal	16-915
Latch	16-917
Jaw Mount (for T-Link®, includes screws)	16-918
Latch Lever	16-919
Communication System (includes 16-529 and 09-913)	16-922
Hinge Pin	16-923
Latch Lever Assembly	16-926
Helmet Mounted Earmuff (pair, includes 18-53)	18-533

## Z4®

PAGE 43	PART #
PX5® Breathing Tube	04-831
SAR Breathing Tube	04-833
Short Breathing Tube for Backpack Assembly	04-841
FR Breathing Tube Cover (Breathing Tube not included)	04-854
Short FR Breathing Tube Cover (Breathing Tube not included)	04-874
Ultra Magnifying Lens 1.0	13-072-1
Ultra Magnifying Lens 1.5	13-072-1.5
Ultra Magnifying Lens 2.0	13-072-2
Ultra Magnifying Lens 2.5	13-072-2.5
Side Pad Mounts (pair, includes Velcro pieces)	15-148
FR Face Seal	15-711
FR Shoulder Cape	15-721
Face Shield	15-811
Weld Visor Assembly (includes 16-672 and 15-821)	15-812
Head Harness Assembly (includes 16-530)	15-820
Side Window Blockers - Solid Gray (pair)	15-821
Side Window Blockers -Shade 5 (pair)	15-821-5
Spring Assembly Kit	15-822
Head Harness Bracket and Adjustment System	15-830
Front Cape Clip Cover	15-831
Safety Lens Bayonet (pair)	15-832
Head Harness with Pads (includes 16-530 and 15-848)	15-840
Comfort Side Padding System	15-848
Bump Cap (includes Comfort and Brow Pad and Front Strap)	15-850
Air Intake Assembly (includes screws)	15-851-1
Bump Cap (includes Comfort Pad)	15-855
Safety Lens (pk 10)	15-878
Bump Cap	15-851
Brow Pad	16-526
Foam Side Pads	16-528
Ratchet Assembly	16-530
Welding Lens Retainer	16-672
ADF Lens	16-871
Welding Impact Lens (pk 10)	16-872
ADF Rear Lens (pk 10)	16-873
Magnifying Lens Holder	16-875
Quiet-Slim™ Earmuffs	18-524
SAR Breathing Tube Hose Washer (pk 5)	NV2023

## Z3™

PAGE 55	PART #
SAR Breathing Tube	03-031
Swivel Air Fitting Elbow	03-032
PX5® Breathing Tube (for Z3™)	04-832
PX4 Air® Breathing Tube (for Z3™)	04-839
Hose Holder	13-041

## Z3™ continued

PAGE 55	PART #
Head Harness	13-042
Comfort Padding (Sweat Band and Neck Pad)	13-043
Hard Hat Adapter Clips	13-045
Outer Lens Frame	13-050
Outer Lens Frame Seals	13-051
Impact Lens (pk 10)	13-052
Ultra Rear Lens (pk 10) (3.78" x 2.68" / 107mm x 71.5mm)	13-054
ADF Ultra Filter (3.78" x 2.68" / 107mm x 71.5mm)	13-062
Magnifying Lens Holder	13-071
Ultra Magnifying Lens 1.0	13-072-1
Ultra Magnifying Lens 1.5	13-072-1.5
Ultra Magnifying Lens 2.0	13-072-2
Ultra Magnifying Lens 2.5	13-072-2.5
Flex Face Seal	13-323
Hard Hat (includes 13-045)	13-326

## NOVA 3®

PAGE 64	PART #
Adjustable Head Support	07-900
Inner Bib	NV2012
Supplied Air Breathing Tube	NV2021B
SAR Breathing Tube Hose Washer (pk 5)	NV2023
Domes (8 sets)	NV2041
Inner Gasket	NV3-721
Inner Lens (pk 10)	NV3-722
Tinted Inner Lens (pk 10)	NV3-722-T
Inner Lens Frame	NV3-723
Outer Lens (pk 50)	NV3-724
Tear-off Lens (pk 50)	NV3-725
Visor Kit (includes Hinge and Latch)	NV3-726
Hinge Lock	NV3-727-2
Visor Mount Kit	NV3-727/8
Air Inlet Kit	NV3-729
Padding Connections (left and right)	NV3-730
Side Padding Frames (left and right)	NV3-731
Side Padding Foam and Covers 5mm	NV3-732-A05
Side Padding Foam and Covers 10mm	NV3-732-A10
Side Padding Foam and Covers 15mm	NV3-732-A15
Side Padding Foam and Covers 20mm	NV3-732-A20
Side Padding Covers (5 pairs)	NV3-733
Head Liner Kit (includes NV3-734-1)	NV3-734
Head Liner Clips (pk 4)	NV3-734-1
Head Liner Foam Padding	NV3-735
Neck Pad	NV3-735-1
Hygiene Kit 5mm	NV3-736-A05
Hygiene Kit 10mm	NV3-736-A10
Hygiene Kit 15mm	NV3-736-A15

# FULL PARTS INDEX

## NOVA 3° continued

PAGE 64	PART #
Hygiene Kit 20mm	NV3-736-A20
Cassette Lens System (pk 20)	NV3-745
Nylon Respirator Cape (includes Inner Bib NV2012)	NV3-750
Extra Length Nylon Respirator Cape (includes Inner Bib NV2012)	NV3-751
Leather Respirator Cape (includes Inner Bib NV2012)	NV3-752
Extra Length Leather Respirator Cape (includes Inner Bib NV2012)	NV3-753
Blast Jacket size XL (includes Inner Bib NV2012)	NV3-754
Blast Jacket size XXL (includes Inner Bib NV2012)	NV3-755
Cape Cover Band	NV3-759

## NOVA 3° TALK™

PAGE 72	PART #
Chest Harness	09-814
Nova 3° Talk™ Upgrade Kit	09-903
Push to Talk Button	09-913
R-Tex High Noise Headset (includes PTT)	09-916
Motorola Connection Cable (two-pin)	09-930
Motorola Connection Cable (multi-pin)	09-931
Motorola Connection Cable (multi-pin)	09-932
Kenwood Connection Cable (two-pin)	09-933
Motorola Connection Cable (multi-pin)	09-934
Side Padding Covers (for Nova 3° Talk™, 5 pairs)	NV3-733TK

## L4™ LIGHT

PAGE 82	PART #
Cable and Hose Clamp	07-122
Power Cable - US	09-021
Power Cable - AU/NZ	09-021-AU
Power Cable - EU	09-021-EU
Power Cable - UK	09-021-UK
L4™ Light and Mount Unit (includes 09-520)	09-512
Mounting Clip	09-520
Outer Lens (pk 10)	09-522
Battery Charger (Power cable not included) - US	09-525
Battery Charger (Power cable not included) - Global	09-525-G
Battery Charger and Power Cable	09-526
Battery Pack	09-532-2

## NOVA 2000°

PAGE 90	PART #
Air Inlet Assembly (previously NV2006/7 and NV2006/7 CE)	03-035
Nylon Respirator Cape	NV2002
Leather Respirator Cape	NV2002L
Extra Length Nylon Respirator Cape	NV2002XL
Nylon Blast Jacket size XL	NV2002HB-XL

## NOVA 2000° continued

PAGE 90	PART #
Nylon Blast Jacket size XXL	NV2002HB-XXL
Window Frame Gasket	NV2003
Visor Kit	NV2004
Latch Kit	NV2008
Helmet Liner size Medium	NV2009
Helmet Liner size Large	NV2009LH
Helmet Liner size Small	NV2009SH
Hygiene Kit size Medium	NV2009/10
Hygiene Kit size Large	NV2009/10LH
Hygiene Kit size Small	NV2009/10SH
Side Wings (pair) size Medium	NV2010
Side Wings (pair) size Large	NV2010LH
Side Wings (pair) size Small	NV2010SH
Inner Bib	NV2012
Cape Cover Band	NV2013
Tear-off Lens (pk 50)	NV2017
Inner Lens (pk 10)	NV2018
Tinted Inner Lens (pk 10)	NV2018-T
Supplied Air Breathing Tube (previously NV2021)	NV2021B
SAR Breathing Tube Hose Washer (pk 5)	NV2023
Outer Lens 0.05mm thick (pk 50)	NV2031
Outer Lens 0.04mm thick (pk 50)	NV2031-015
Velstuds (pk 6)	NV2038
Domes (8 sets)	NV2041
Hand Strap	NV2042

## NOVA 2000° TALK™

PAGE 96	PART #
Chest Harness	09-814
Nova 2000° Talk™ Upgrade Kit	09-900
Push to Talk Button	09-913
R-Tex High Noise Headset (includes PTT)	09-916
Motorola Connection Cable (two-pin)	09-930
Motorola Connection Cable (multi-pin)	09-931
Motorola Connection Cable (multi-pin)	09-932
Kenwood Connection Cable (two-pin)	09-933
Motorola Connection Cable (multi-pin)	09-934

## ASTRO™

PAGE 106	PART #
Visor Kit (includes Strap and Screws)	02-804
Visor Strap (pk 5)	02-805
Cleat and Screws	02-806
Window Gasket Seal	02-807
Suspension Clips (pk 4)	02-808
Head Harness (NIOSH approved)	02-809

## ASTRO™ continued

PAGE 106	PART #
Head Harness (CE approved)	02-809CE
Inner Lens (pk 10)	02-810
Tinted Inner Lens (pk 10)	02-810-T
Outer Lens (pk 50)	02-811-015
Cape Cover Band	02-812
Tear-off Lens (pk 50)	02-816
Air Inlet Assembly (previously NV2006/7 and NV2006/7 CE)	03-035
Nylon Respirator Cape	NV2002
Leather Respirator Cape	NV2002L
Inner Bib	NV2012
Supplied Air Breathing Tube (previously NV2021)	NV2021B
SAR Breathing Tube Hose Washer (pk 5)	NV2023

## T-LINK®

PAGE 116	PART #
PX5° Breathing Tube	04-831
SAR Breathing Tube (previously 04-830)	04-833
Short Breathing Tube for Backpack Assembly	04-841
Tychem® Breathing Tube Cover (Breathing Tube not included)	04-852
Short Tychem® Breathing Tube Cover (Breathing Tube not included)	04-872
Jaw Assembly (includes 16-515)	16-514
Lens Seal	16-515
Earmuff Bracket (pair, includes screws)	16-516
Air Inlet Adapter	16-519
Side Padding System	16-520-S
Fit System (includes 16-520-S, 16-521, 16-522, 16-525, 16-526, 16-530 and 16-531)	16-520-T
Impact Absorber	16-521
Comfort Pad	16-522
Head Harness System Bracket and Air Deflector	16-525
Brow Pad	16-526
Side Padding Frames	16-527
Foam Side Pads	16-528
Ratchet Assembly	16-530
Head Harness (includes 16-530)	16-531
T-Link® Hard Hat Assembly	17-010
T-Link® Bump Cap Assembly	17-110
Tychem® 2000 Hood	17-712
Tychem® 4000 Hood with Sealed Seams	17-713
Tychem® 4000 XL Hood with Sealed Seams, 0.40 Lens	17-713-SX
Lens Clips (pair)	17-512
Peel-off Lens (pk 25)	17-815
Cassette Lens (7 layers)	17-817
Low Flow Indicator Assembly	NV2030
SAR Breathing Tube Hose Washer (pk 5)	NV2023
Domes (8 sets)	NV2041

## T-LINK® continued

PAGE 116	PART #
Hand Strap	NV2042
PX5° Breathing Tube	04-831
Head Harness Assembly	15-841

## T200

PAGE 128	PART #
PX5° Breathing Tube	04-831
SAR Breathing Tube (previously 04-830)	04-833
Bump Cap (includes Comfort and Brow Pad and Front Strap)	15-850
Bump Cap (includes Comfort Pad)	15-855
Air Duct Assembly (includes 17-513)	15-860
Air Duct Assembly	15-861
Brow Pad	16-526
Ratchet Assembly	16-530
Lens Mounts (pair)	17-513
Tychem® 2000 Full Hood with Neck Seal	17-712
Tychem® 4000 Full Hood with Neck Seal and Sealed Seams	17-713
Tychem® 2000 Face Seal	17-722
Tychem® 2000 Shoulder Length Hood with Face Seal	17-732
Clear-Vision Cassette Lens (7 layers, for face seal hoods)	17-811
Peel-off Lens (pk 50) (for full length hoods)	17-815
Clear-Vision Cassette Lens (7 layers, for full length hoods)	17-817
Quiet-Slim™ Helmet Earmuffs	18-524

## T150™

PAGE 138	PART #
SAR Breathing Tube	03-031
Swivel Air Filting Elbow	03-032
Visor and Rubber Face Seal	11-910
Inner Face Seal	11-911
Inhalation Valves	11-912
Clamping Band	11-913
Visor and Valves	11-914
Tear-off Lens (pk 50)	11-924
Nylon Head Suspension	11-934
SAR Breathing Tube Hose Washer (pk 5)	NV2023

## PX5° PAPR

PAGE 148	PART #
Fan Housing	03-810
Belt Support Mount	03-811
Door Cover	03-812
HEPA Cartridge/Filter Door	03-813
Gas Cartridge/Filter Door	03-814
Battery Door Assembly (includes 03-818)	03-815
Battery Door Seal	03-817

# FULL PARTS INDEX

## PX5® PAPR continued

PAGE 148	PART #
Battery Door Hinge (retainer)	03-818
Flow Meter	03-819
FR Backpack Assembly	03-822-FR
Easy Clean Backpack Assembly	03-822-DC
Complete Charger Kit - US	03-851-DC
Complete Charger Kit - AU/NZ	03-851-DC-AU
Complete Charger Kit - EU	03-851-DC-EU
Complete Charger Kit - UK	03-851-DC-UK
Standard Battery	03-855
High Capacity Battery	03-856
Pre-filter (pk 10)	03-890
Spark Arrestor	03-891
HEPA Cartridge/Filter	03-892
OV/AG/HE Gas Cartridge/Filter	03-893
Combination HEPA A2P Gas Filter	03-893-A2
Multi-Gas/HE Cartridge/Filter	03-894
Combination HEPA ABE1P Gas Cartridge/Filter	03-894-ABE
Combination HEPA ABEK1P Gas Cartridge/Filter	03-895-ABEK
PAPR Breathing Tube (for Z-Link®, Z4®, Nova 3® and T-Link®)	04-831
PAPR Breathing Tube (for Z3®)	04-832
Short Breathing Tube for Backpack Assembly	04-841
2" Belt Assembly - Easy Clean	07-765-DC
2" Belt Assembly - FR	07-765-FR
Power Cable - US	09-021
Power Cable - AU/NZ	09-021-AU
Power Cable - EU	09-021-EU
Power Cable - UK	09-021-UK

## HX5™ PAPR

PAGE 158	PART #
Fan Housing	03-610
Belt Support Mount	03-811
Door Cover	03-812
HEPA Cartridge/Filter Door	03-813
Battery Door Assembly (includes 03-818)	03-815
Battery Door Seal	03-817
Battery Door Hinge (retainer)	03-818
Flow Meter	03-819
FR Backpack Assembly	03-822-FR
Easy Clean Backpack Assembly	03-822-DC
Complete Charger Kit - US	03-850
Battery Charger	03-851
Standard Battery	03-855
Pre-filter (pk 10)	03-890
Spark Arrestor	03-891
HEPA Cartridge/Filter	03-892
PAPR Breathing Tube (for Z-Link®, Z4®, Nova 3® and T-Link®)	04-831

## HX5™ PAPR continued

PAGE 158	PART #
PAPR Breathing Tube (for Z3™)	04-832
Short Breathing Tube for Backpack Assembly	04-841
2" Belt Assembly - Easy Clean	07-765-DC
2" Belt Assembly - FR	07-765-FR
Power Cable - US	09-021
Power Cable - AU/NZ	09-021-AU
Power Cable - EU	09-021-EU
Power Cable - UK	09-021-UK

## GX4® GAS MONITOR

PAGE 168	PART #
Aluminum Wall Bracket	08-231
Blank Sensor Case	08-420
Gas Sensor Cartridges - Carbon Monoxide 10ppm	08-420-01
Gas Sensor Cartridges - Carbon Monoxide 5ppm	08-420-02
Gas Sensor Cartridges - Hydrogen Sulfide 10ppm	08-420-03
Gas Sensor Cartridges - Oxygen 19.5% - 23%	08-420-04
Sensor Manifold Tube	08-422
Heavy Duty Field Case	08-424
Mounting Bracket (pair, includes screws)	08-425
Heavy Duty Field Case (includes Battery and Charger)	08-427
Air Supply Hose and One Touch Connector	08-428
Air Supply Hose and One Touch Connector with RZ Fittings	08-428-RZ
M5 Inlet Filter, Sintered Brass	08-429
Power Adapter Pack - US	08-430
Power Adapter Pack - AS/NZ	08-430-AU
Power Adapter Pack - UK	08-430-UK
Power Adapter Pack - EU	08-430-EU
12 Volt Cable with Battery Clips	08-431
Auxiliary Cable 50' with Bare End	08-434
Auxiliary Strobe Light with 50' Cable	08-435
Auxiliary Strobe and Alarm Tower with 50' Cable	08-436
Calibration Adapter	08-450
Calibration Flow Regulator 1.5 SLPM (includes 08-450, for Zero Air and CO gas bottles)	08-451
Calibration Flow Regulator 1.5 SLPM (includes 08-450, for H <sub>2</sub> S gas bottles)	08-452
Zero Air (20.9% Oxygen in Nitrogen)	08-460
CO 20ppm (20ppm Carbon Monoxide in Air)	08-461
H <sub>2</sub> S 20ppm (20ppm Hydrogen Sulfide in Nitrogen)	08-462
External Flow Regulator	08-470
External Flow Regulator with RZ Fittings	08-470-RZ

## GX4® GAS MONITOR continued

PAGE 168	PART #
Power Cable - US	09-021
Power Cable - AU/NZ	09-021-AU
Power Cable - UK	09-021-UK
Power Cable - EU	09-021-EU

## RADEX® AIRLINE FILTER

PAGE 180	PART #
1/4" Coupler 3/8" MNPT with RZ Fitting (to fit 04-965 Manifold)	03-053-CM-RZ
1/4" Coupler 3/8" FNPT	04-911
3/8" Brass Tee	04-912
3/8" Brass Cap	04-913
Pressure Regulator	04-914
Pressure Gauge	04-915
Pressure Relief Valve (150 psi)	04-916
3/8" Brass Nipple	04-917
Filter Lid (for 04-900)	04-918
O-Ring (set of 2)	04-919
Bolt, Nut and Washer (set of 4)	04-920
Brass Drain Tap	04-922
Base Mount	04-923
Auto Drain Unit	04-924
Micro Mist Filter 1/2"	04-925
1" x 1/2" Reducing Nipple	04-926
Mainline Pre-filter	04-927
Brass Elbow	04-928
Filter Element (for 04-927)	04-929
Micro Mist Element (for 04-925)	04-930
Auto Drain Assembly (for 04-924)	04-931
Parts Bag for Radex (04-900)	04-932
1/2" NPT Hex Connector	04-952
Six Outlet Upgrade Kit	04-960
Six Outlet Upgrade Kit with RZ Fitting	04-960-RZ
Six Outlet Filter Lid	04-961
Super High Flow Regulator (includes 04-915)	04-962
1/4" Coupler 3/8" MNPT (to fit 04-965 Manifold)	04-964
Six Outlet Manifold	04-965
1" NPT Hex Connector	04-966
1" NPT x 3/4" BSP Bushing	04-967
Ambient Air Pump (one person)	06-100
Replacement Filter Cartridge (generic)	AFC100
Replacement Radex® Filter Cartridge	APF3100
Inlet Filter Element	9700-01
Exhaust Filter Element	9700-02
Pressure Relief Valve	9700-03
Pressure Gauge	9700-04

## RADEX® AIRLINE FILTER continued

PAGE 180	PART #
Inlet Filter Assembly (includes 9700-01)	9700-08
Exhaust Filter Canister	9700-15
1/2" Hansen Coupler	9700-72AD

## AIR SUPPLY

PAGE 190	PART #
Quick Release Coupler 1/4" Female Thread (CE approved)	03-022-CF
Schrader Coupler to 1/4" NPT Female	03-042-CF
Schrader Plug to 1/4" NPT Female	03-042-PF
Schrader Twist Lock 3/8" MNPT Plug	03-043-PM
15' Recoil Breathing Air Supply Hose 3/8IN Diameter RPB® Standard Coupler	04-412-15
25' Recoil Breathing Air Supply Hose 3/8IN Diameter RPB® Standard Coupler	04-412-25
25' Breathing Air Supply Hose 3/8" Diameter with RZ Fittings	04-352-25-RZ
25' Breathing Air Supply Hose 3/8" Diameter (CE approved)	04-322-25
50' Breathing Air Supply Hose 3/8" Diameter (CE approved)	04-322-50
100' Breathing Air Supply Hose 3/8" Diameter (CE approved)	04-322-100
25' Breathing Air Supply Hose 3/8" Diameter with Schrader Fitting	04-342-25
50' Breathing Air Supply Hose 3/8" Diameter with Schrader Fitting	04-342-50
25' Breathing Air Supply Hose 3/8" Diameter with RZ Fittings	04-352-25-RZ
50' Breathing Air Supply Hose 3/8" Diameter with RZ Fittings	04-352-50-RZ
100' Breathing Air Supply Hose 3/8" Diameter with RZ Fittings	04-352-100-RZ
15' Recoil Breathing Air Supply Hose 3/8IN Diameter with Schrader Coupler	04-442-15
25' Recoil Breathing Air Supply Hose 3/8IN Diameter with Schrader Coupler	04-442-25
Quick Release Coupler 1/4" Female Thread	NV2025
100' Breathing Air Supply Hose 3/8" Diameter (includes Quick Release Fittings)	NV2027
25' Breathing Air Supply Hose 3/8" Diameter (includes Quick Release Fittings)	NV2028
50' Breathing Air Supply Hose 3/8" Diameter (includes Quick Release Fittings)	NV2029
50' Breathing Air Supply Hose 1/2" Diameter (includes Quick Release Fittings)	NV2035
100' Breathing Air Supply Hose 1/2" Diameter (includes Quick Release Fittings)	NV2036

# FULL PARTS INDEX

## C40™ CLIMATE CONTROL DEVICE

PAGE 198	PART #
1/4" Plug to 1/4" NPT Male Swivel	03-012-PMS
1/4" Safety Plug to 1/4" NPT Male Swivel	03-022-PMS
Schrader Twist Lock MNPT Swivel Plug	03-042-PMS
1/4" Male Thread RZ Coupler Swivel Plug	03-052-PMS-RZ
U Tube Assembly	03-510
Bottom Case	03-514
Top Case Assembly	03-521
Exhaust Assembly	03-522
Silencer Assembly	03-526
Inlet Collar	03-536
Silencers (pair)	03-537
Belt Loop	03-538
Tychem® Cover	04-862
2" Belt with Nylon Buckle	07-765
2" NOMEX® Belt with Acetal Buckle	07-765-FR

## FLOW CONTROL

PAGE 204	PART #
Quick Release Tail 1/4" Male Thread (previously 4000-06)	03-012-PM
Adapter 1/4" RPB® Plug to 3/8" NPT Male Thread (previously 03-111)	03-013-PM
Flow Control Valve (CE approved) (previously NV2016CE)	03-022-PM
DQC SHD-Series Schrader Plug to 1/4" NPT Male	03-042-PM
Quick Release Tail 1/4" Male Thread with RZ Fitting	03-052-PM-RZ
Constant Flow Valve Assembly (NIOSH approved)	03-101
Constant Flow Valve Assembly (CE approved)	03-102
Constant Flow Valve - Low Pressure	03-106
Schrader Twist Lock 3/8 MNPT Plug	03-043-PM
Cold Air Tube Assembly (NIOSH approved)	4000-01
Cold Air Tube Assembly (CE approved, includes Temperature Shield and Swivel Connector)	4000-01CE
Cold Air Tube Assembly with GHT Threads	4000-02-GHT
Top Thread Cap BSP Thread (for 4000-01)	4000-03
Top Thread Cap GHT Thread (for 4000-20)	4000-03GHT
Cold Air Spinner	4000-04
Cool Air Tube Body	4000-05B
Hot Air Tube Body	4000-05R
Breaker	4000-07
Regulator Body	4000-08
Spindle and Knob	4000-09
Locking Screw	4000-10
Regulator Assembly	4000-11
Temperature Shield	4000-12
Hot Air Spinner	4000-13
Flow Reducer	4000-14
Outlet Valve	4000-15

## FLOW CONTROL continued

PAGE 204	PART #
Silencer Disc	4000-16
Silencer Disc - Brass	4000-16B
Retainer Nut	4000-17
Outlet Valve Complete Assembly	4000-18
Outlet Valve (for 4000-40)	4000-38
Hot Air Tube Assembly (NIOSH approved)	4000-20
Hot Air Tube Assembly (CE approved)	4000-20CE
Silenced Cool Air Tube Assembly	4000-40
Flow Control Valve (NIOSH approved)	NV2016
1.5" Nylon Belt	NV2022
Adapter 1/2" Low Pressure Plug to 3/8" NPT Male Thread	NV2034

## BLAST SUIT

PAGE 214	PART #
Blast Suit size Small	07-755-S
Blast Suit size Medium	07-755-M
Blast Suit size Large	07-755-L
Blast Suit size XL	07-755-XL
Blast Suit size XXL	07-755-XXL
Blast Suit size XXXL	07-755-XXXL
Blast Suit size XXXXL	07-755-XXXXL

## SAFETY ESSENTIALS

PAGE 218	PART #
Head Sock	05-601
Do-Rag	05-613
RPB Leather Gloves	07-701
Knee Pads (pair)	07-761
Quiet-Slim™ Earmuffs	18-524

The Respiratory Protection Brand® 1-866-494-4599 | [rpbsafety.com](http://rpbsafety.com)