

CD342-B

# DICKSON

Environmental Monitoring + Compliance Experts

**PRODUCTS  
& SERVICES  
FOR ALL YOUR  
ENVIRONMENTAL  
MONITORING  
NEEDS**

# DICKSON

Environmental Monitoring + Compliance Experts

## ABOUT DICKSON

**Dickson is our customers' expert compliance partner for environmental monitoring.**

**Dickson was incorporated in the United States in 1923.** By incorporating the best and newest innovations, Dickson enables our customers to manage compliance, asset protection, data analysis, and product quality with confidence.

**Today, Dickson provides validated solutions and services for over 80% of Fortune 100 companies** in highly-regulated industries including healthcare, medical device, pharmaceutical, food, aerospace and more. With the trust of over 80,000 customers worldwide, Dickson helps to protect billions of dollars' worth of assets and remains an industry innovator and leader.

## CUSTOMER SUPPORT

Our product experts are available via phone and email to provide assistance with your environmental monitoring needs. Call 630.563.4219 to speak with someone directly or you may email [support@dicksondata.com](mailto:support@dicksondata.com).

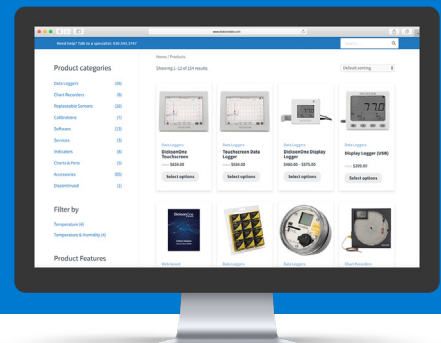
## TECHNICAL SUPPORT

Our technical support experts are available via phone and email to provide assistance with your Dickson product(s). Call 630.563.4219 to speak with someone directly or you may email [support@dicksondata.com](mailto:support@dicksondata.com).

# EASY ORDERING!

We want to help! Our product experts are standing by to assist you with your purchase and answer any questions you may have.

**CALL TO ORDER TODAY: 630.563.4219**



**Need to buy right away or already know what you need?  
Visit [DicksonData.com](http://DicksonData.com) 24/7 for ordering, technical support, and more.**

# WHAT'S INSIDE

## NEW! BLUETOOTH® DATA LOGGERS

Our Bluetooth®-enabled data loggers match the trends and challenges of today's temperature-controlled supply chain in a variety of domains, including life sciences, transport & logistics, and retail & food services.

## DICKSONONE

DicksonOne is a cloud-based environmental monitoring system for monitoring your critical variables from your computer, tablet, or smart phone.

## DATA LOGGERS

With a wide range of applications and a host of features, Dickson's data loggers are cost-effective solutions for monitoring any required area.

## WiZARD2 ON-PREMISE

Dickson's on-premise monitoring system, Wizard, wirelessly manages your entire environment, and a wide array of probes lets you use the system for any application.

## INDICATORS

If you need simple features and data at your fingertips, Dickson's indicators are for you. Simply scan or probe your product for an instant temperature or humidity reading.

## REPLACEABLE SENSORS™

Recalibrate any compatible Dickson device on the fly without having to send in your device. Simply remove the existing sensor and plug the new sensor into the unit in a motion that's as easy as swapping batteries in your TV remote.

## CHART RECORDERS & ACCESSORIES

Dickson's chart recorders are backed by nearly 100 years of excellence. Add in our wide array of available charts and pens, and you have the flexibility to monitor what and how you want to.

## SOFTWARE & ACCESSORIES

Dickson's software options allow for easy system configuration and managing of data and our wide array of accessories contains everything you need for proper installation and hassle-free set-up.

## SERVICES

In most regulated industries, monitoring systems are not the only thing necessary for compliance. Turn to our team of experts for your compliance needs.

**EMERALD**



**SMALL-FOOTPRINT TEMPERATURE DATA LOGGER  
FEATURING BLUETOOTH® WIRELESS CONNECTIVITY**

Specially designed to meet your cold-chain logistics needs, Emerald ensures temperature traceability on the move. Emerald helps you protect sensitive and perishable products from storage to delivery.

- Robust construction for use in harsh transport scenarios
- Fits neatly inside nearly any type of container, compartment, or enclosure
- Data access, monitoring, and alerts with OCEAVIEW mobile
- IP 60 rating
- 1-year battery life (replaceable)



MODEL	DESCRIPTION	AMBIENT OPERATING CONDITIONS	ACCURACY	BACKUP CAPACITY	IP RATING	PRICE
ENR.EMD.P005	MODULE WITH INTERNAL SENSOR	-40°C TO 85°C 0-90% RH (NON-CONDENSING)	±0.5°C	16,000 PTS	60	\$149
ENR.EMD.P006	MODULE WITH CONNECTOR FOR EXTERNAL PT100 SENSOR	-50°C TO 200°C OR -200°C TO 50°C	±0.5°C	16,000 PTS	60	\$149
CONTACT US	COLOR IDENTIFICATION RINGS	-	-	-	-	-

**ATLAS**



**COMPACT, LIMITED DURATION DATA LOGGER  
FEATURING BLUETOOTH® WIRELESS CONNECTIVITY**

Atlas meets the needs of supply chain stakeholders for continuously monitoring temperature in close proximity to products. Atlas enables end-to-end traceability for sensitive products from their point of origin to their final destination.

- Small design enables monitoring ambient temperature directly inside packaging
- Data access, monitoring, and alerts with OCEAVIEW mobile
- Cost-effective solution reusable for at least 1 year
- 1-year battery life (non-replaceable)



MODEL	DESCRIPTION	AMBIENT OPERATING CONDITIONS	ACCURACY	BACKUP CAPACITY	IP RATING	PRICE
ENR.ATL.0003	MODULE WITH INTERNAL SENSOR	-30°C TO 70°C 0-90% RH (NON-CONDENSING)	±0.5°C	16,000 PTS	30	\$49

# OCEAVIEW MOBILE



OCEAVIEW Mobile for iOS and Android enables you to configure and monitor OCEASOFT Atlas and Emerald modules equipped with Bluetooth® technology, providing an easy solution for using your smartphone or tablet to check up on temperature sensitive packages, refrigerated trucks, laboratories, storage facilities, and more.

- Free mobile app for iOS and Android
- Provides complete control over all data logging settings
- Detailed sensor information at the touch of a button
- Generates and sends detailed reports via e-mail
- Programs high/low temperature limits, read intervals, alarm delays, startup options, flight mode
- Watch Mode feature for live tile-based view to monitor data loggers continually
- Displays data from all compatible modules within wireless range
- Reusable templates for easy programming
- Data geotagging with smartphone GPS
- On-screen alarm indication in List and Watch Mode (also with audio alert)
- .CSV file export and send by e-mail
- Flight Mode management for airline transportation



# SENSORS FOR EMERALD

## SON.TPT.0006 PT100 TEMPERATURE

- Cryogenic freezers, liquid nitrogen tanks
- Transport applications when used with Emerald module

## SON.TPT.0012 PT100 TEMPERATURE

- Incubators, ovens
- Transport applications when used with Emerald module



MODEL	DESCRIPTION	AMBIENT OPERATING CONDITIONS	ACCURACY	CABLE LENGTH	PRICE
SON.TPT.0006	PT100 TEMPERATURE	-200°C TO 50°C	±0.08°C TO 0.25°C	100 CM (W/CONNECTOR)	\$132.25
SON.TPT.0012	PT100 TEMPERATURE	-50°C TO 200°C	±0.08°C TO 0.25°C	100C M (W/CONNECTOR)	\$105.80

# Monitor Your Environment From Anywhere, 24/7

DicksonOne provides continuous remote monitoring of your most critical environments to ensure product safety and leave you with peace of mind.



# SIMPLE SCALABLE COMPLIANT

DicksonOne is a cloud-based remote monitoring system that monitors your most important environmental variables including temperature, humidity, and differential pressure. Collect all your data in a single platform, and monitor and receive alerts on any device. With DicksonOne, even the most heavily regulated environments can meet compliance requirements with ease.

---

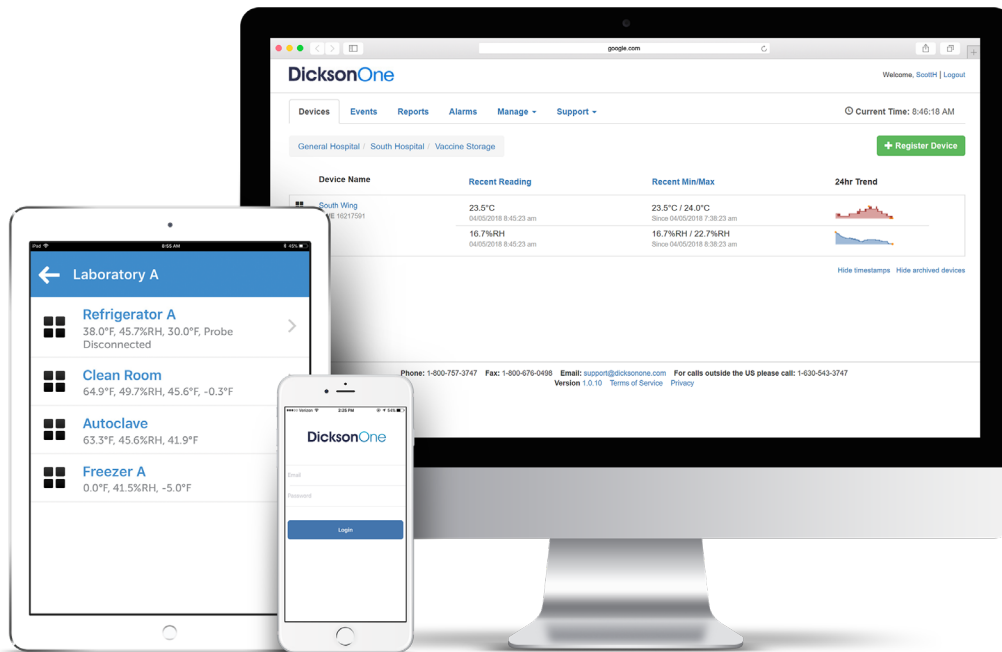
**Dickson**One

CD342-B

# DICKSON

Environmental Monitoring + Compliance Experts

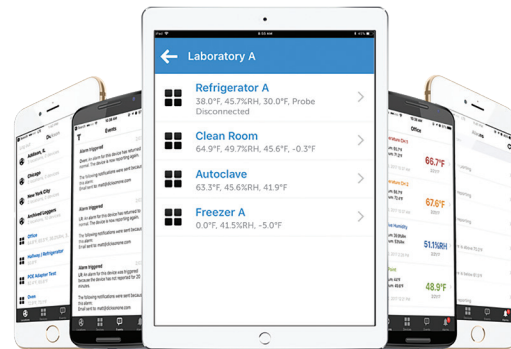
**PRODUCTS  
& SERVICES  
FOR ALL YOUR  
ENVIRONMENTAL  
MONITORING  
NEEDS**



## DICKSONONE SOFTWARE

DicksonOne is a cloud-based temperature and humidity monitoring platform. A subscription provides users with the following benefits:

- Automatic updates (nothing to install) with all new features
- Email, Text, & Phone alarms
- Unified monitoring system scalable to your needs
- Remote access for an unlimited number of users anywhere you have internet
- Unlimited data storage



Software available in monthly, yearly, and multi-year contracts with features to meet your compliance needs. Be sure to ask about the benefits of multi-year commitments. Visit [DicksonData.com/DicksonOne](http://DicksonData.com/DicksonOne) for more information.

DESCRIPTION	PRICE
DICKSONONE SUBSCRIPTION	CALL 630.563.4219 FOR OPTIONS AND PRICING

## CALIBRATION

When strict environmental conditions are required, it's important to have trusted, accurate sensors that have been calibrated to traceable National Standards.

TYPE	INCLUDED DOCUMENTATION	CALIBRATION/ RECALIBRATION
STANDARD	-	-
N100 / N150	1-POINT NIST CALIBRATION AND CERTIFICATE	\$99 / \$156
N300 / N350	3-POINT NIST CALIBRATION AND CERTIFICATE	\$156 / \$209
N400 / N450	3-POINT NIST & A2LA CALIBRATION AND CERTIFICATION	\$269 / \$315
N550	3-POINT NIST CALIBRATION WITH BEFORE DATA CERTIFICATE	\$269
N995	CUSTOM CALIBRATION POINT	\$69

**NEW! BATTERY-OPERATED**

RFL

**DICKSONONE BATTERY-OPERATED DATA LOGGER**

*DICKSONONE SUBSCRIPTION REQUIRED*

With no AC power or WiFi required, our newest data logger allows you to monitor even the hardest to reach places. Thanks to impressive battery life, unparalleled data transmission distance with LoRa, and its compact size, this data logger can go where no logger has gone before.

- ✔ Long-Range Data Transmission with LoRaWAN
- ✔ Battery-Powered
- ✔ Replaceable Sensor™ Technology



RFL

MODEL	DESCRIPTION	AMBIENT OPERATING TEMPERATURE CONDITIONS	BATTERY LIFE	BACKUP CAPACITY	RADIO FREQUENCY	RF GATEWAY INCLUDED	STARTING PRICE
RFL	BATTERY-OPERATED DATA LOGGER	32°F TO 158°F (0°C TO 70°C)	1+ YEAR	~30,000 PTS	915 MHZ LORA	NO	\$279
RFL	5-PACK STARTER KIT WITH REPLACEABLE SENSORS AND RF GATEWAY	32°F TO 158°F (0°C TO 70°C)	1+ YEAR	~30,000 PTS	915 MHZ LORA	YES	\$2,694

ⓘ THIS DEVICE REQUIRES THE RF GATEWAY (BELOW). DON'T FORGET TO ORDER A REPLACEABLE SENSOR™ (THIRD GENERATION)

RFG

**RADIO-FREQUENCY LoRa GATEWAY**

Dickson's RF LoRa Gateway makes it easy to connect your battery-operated data loggers to your DicksonOne account.

- ✔ LoRaWAN Technology
- ✔ Ethernet Connectivity

*This device is required in order to operate Dicksonone Battery-Operated Data Loggers.*



RFG

MODEL	DESCRIPTION	CHANNELS	IP RATING	STARTING PRICE
RFG	RADIO-FREQUENCY LORA GATEWAY (REQUIRED DEVICE FOR BATTERY-OPERATED DATA LOGGER(S))	8	IP30	\$749

ⓘ THIS DEVICE IS REQUIRED FOR THE BATTERY-OPERATED DATA LOGGER

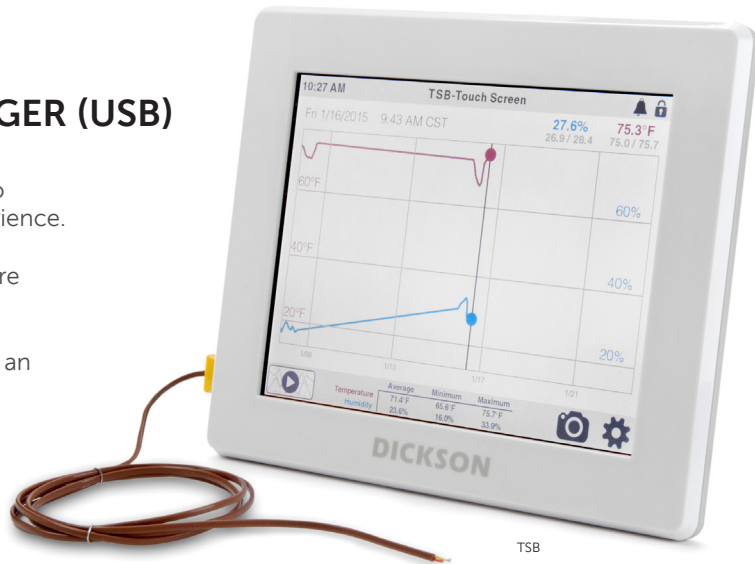
**TOUCHSCREEN**

**TSB TOUCHSCREEN DATA LOGGER (USB)**

COMPATIBLE WITH DICKSONWARE 2.0 SOFTWARE

Our touchscreen data loggers were made to simplify, yet enhance your monitoring experience. With a Dickson touchscreen, you can view temperature, humidity, or differential pressure data with nothing more than the touch of a finger. With access to your data right on the screen, proving historical monitoring during an audit has never been easier.

- Replaceable Sensor™ technology
- Viewable data at point of monitoring
- User-selectable Sample Rate
- USB flash drive for data download



TSB

MODEL	DOWNLOAD TYPE	AMBIENT OPERATING TEMPERATURE CONDITIONS	BATTERY BACKUP	BACKUP CAPACITY	DISPLAY DIMENSIONS	REPLACEABLE SENSOR™ PORTS	PRICE
TSB	USB	14°F TO 140°F (-10°C TO 60°C)	70 HOURS	~1,000,000 PTS	8" LCD TOUCHSCREEN	2	\$469

ⓘ DON'T FORGET TO ORDER A REPLACEABLE SENSOR™ (SECOND GENERATION)

**DISPLAY**

**DSB DISPLAY DATA LOGGER (USB)**

COMPATIBLE WITH DICKSONWARE 2.0 SOFTWARE

The Display Logger (DSB) is a feature-rich USB data logger. With the logger, it's easy to collect temperature and humidity data from Dickson's Replaceable Sensors™. Works with the latest version of DicksonWare.

- Replaceable Sensor™ technology
- Fast downloading with Legacy Uploader
- Easy-to-use interface
- Audio and Visual alarms



DSB

MODEL	DESCRIPTION	DOWNLOAD TYPE	AMBIENT OPERATING TEMPERATURE CONDITIONS	BATTERY TYPE	BATTERY LIFE	DATA CAPACITY	SENSOR TYPE	PRICE
DSB	DISPLAY TEMPERATURE & HUMIDITY LOGGER	USB	32°F TO 158°F (0°C TO 70°C)	2 AA BATTERIES (AC POWER ADAPTER SOLD SEPARATELY)	APPROX. 2 YEARS	400,000 READINGS	REPLACEABLE SENSOR(S)™ (SOLD SEPARATELY)	\$199

ⓘ DON'T FORGET TO ORDER A REPLACEABLE SENSOR™ (THIRD GENERATION)

**PRESSURE DATA LOGGERS**

**PR125/325/525  
PRESSURE DATA LOGGER**

COMPATIBLE WITH DICKSONWARE 2.0 SOFTWARE

Our most feature-rich pressure data loggers provide data retrieval without having to move the unit and the digital display provides current and min/max readings.

- 0-100 PSI (PSI, ATM, Bar, mBar, InH2O, FtH2O, mmH2O, mmHG, InHg, Pascal, kP, MCA)
- IP68 resistant case
- 1-second sampling rate
- Flash card option for data retrieval
- Delayed Start
- USB Connectivity



PR125/325/525

MODEL	DESCRIPTION	RANGE	ACCURACY	AMBIENT OPERATING TEMPERATURE CONDITIONS	DATA CAPACITY	BATTERY LIFE	PRICE
PR125	PRESSURE DATA LOGGER	0-100 PSI	1%	-4°F TO 158°F (-20°C TO 70°C)	64,768 PTS	6 MONTHS (AT 5 MINUTE SAMPLE RATE)	\$539
PR325	PRESSURE DATA LOGGER	0-300 PSI	1%	-4°F TO 158°F (-20°C TO 70°C)	64,768 PTS	6 MONTHS (AT 5 MINUTE SAMPLE RATE)	\$539
PR525	PRESSURE DATA LOGGER	0-500 PSI	1%	-4°F TO 158°F (-20°C TO 70°C)	64,768 PTS	6 MONTHS (AT 5 MINUTE SAMPLE RATE)	\$647

**PR150/350  
SMALL PRESSURE DATA LOGGER**

COMPATIBLE WITH DICKSONWARE 2.0 SOFTWARE

At just 2", this compact and discreet pressure data logger fits in toolboxes, tight corners, or wide open spaces without attracting attention.

- USB Downloading
- 0-100 PSI (PSI, ATM, Bar, mBar, InH2O, FtH2O, mmH2O, mmHG, InHg, Pascal, kP, MCA)
- Water-resistant case
- Pressure sensor includes built in diaphragm seal
- Delayed Start



PR150/350

MODEL	DESCRIPTION	RANGE	ACCURACY	AMBIENT OPERATING TEMPERATURE CONDITIONS	DATA CAPACITY	BATTERY LIFE	PRICE
PR150	SMALL PRESSURE DATA LOGGER	0-100 PSI	1%	32°F TO 122°F (0°C TO 50°C)	32,512 PTS	1 YEAR (AT 5 MINUTE SAMPLE RATE)	\$539
PR350	SMALL PRESSURE DATA LOGGER	0-300 PSI	1%	32°F TO 122°F (0°C TO 50°C)	32,512 PTS	1 YEAR (AT 5 MINUTE SAMPLE RATE)	\$539

**CALIBRATION**

When strict environmental conditions are required, it's important to have trusted, accurate sensors that have been calibrated to traceable National Standards.

TYPE	INCLUDED DOCUMENTATION	CALIBRATION/ RECALIBRATION
STANDARD	-	-
N100 / N150	1-POINT NIST CALIBRATION AND CERTIFICATE	\$99 / \$156
N300 / N350	3-POINT NIST CALIBRATION AND CERTIFICATE	\$156 / \$209
N400 / N450	3-POINT NIST & A2LA CALIBRATION AND CERTIFICATION	\$269 / \$315
N550	3-POINT NIST CALIBRATION WITH BEFORE DATA CERTIFICATE	\$269
N995	CUSTOM CALIBRATION POINT	\$69

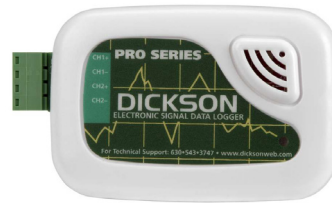
## VOLTAGE DATA LOGGER

ES120

### VOLTAGE DATA LOGGER

COMPATIBLE WITH DICKSONWARE SOFTWARE

Record inputs from any 0-20 mA or 0-5V transmitter for pH, flow, fluid level, or any variable you choose.



ES120

MODEL	DESCRIPTION	AMBIENT OPERATING CONDITIONS	IP RATING	ACCURACY	DATA CAPACITY	BATTERY LIFE	PRICE
ES120	VOLTAGE DATA LOGGER	-40°F TO 176°F (-40°C TO 80°C) 0-95% RH (NON-CONDENSING)	IP20	±0.1 (RECORDER ONLY)	~35,512	5 YEARS (AVG)	\$259

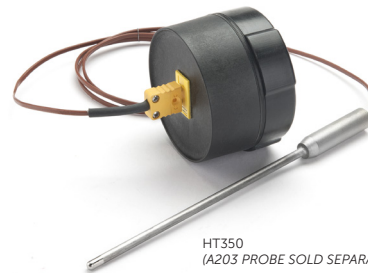
## HIGH TEMP DATA LOGGERS

HT350

### HIGH TEMPERATURE PROCESS LOGGER

COMPATIBLE WITH DICKSONWARE 2.0 SOFTWARE

The HT350 is Dickson's answer to food-processing monitoring. HACCP approved, interchangeable immersion probes, and a large temperature range: it makes keeping your food safe much, much easier.



HT350  
(A203 PROBE SOLD SEPARATELY)

MODEL	DESCRIPTION	RANGE	ACCURACY	IP RATING	BATTERY LIFE	PRICE
HT350	HIGH TEMPERATURE PROCESS LOGGER	40°F TO 257°F (-40°C TO 125°C)	±1.8°F FROM -22°F TO 122°F (±1°C FROM -30°C TO 50°C)	67	9 MONTHS (AT 1 MINUTE SAMPLE RATE, AMBIENT TEMPERATURE)	\$349

HT300

### SUBMERSIBLE HIGH TEMPERATURE LOGGER

COMPATIBLE WITH DICKSONWARE 2.0 SOFTWARE

The HT300 is perfectly compact for your application. You can place it in water, fit it into a bottle, and show off its food grade stainless steel to your regulatory agency. HACCP and FDA compliant.



HT300

MODEL	DESCRIPTION	RANGE	ACCURACY	IP RATING	BATTERY LIFE	PRICE
HT300	HIGH TEMPERATURE DATA LOGGER	-40° TO 257°F (-40° TO 125°C)	±1.8°F FROM -40°F TO 257°F (±1°C FROM -40°C TO 125°C)	68	1 YEAR (AT 1 MINUTE SAMPLE RATE, AMBIENT TEMPERATURE)	\$349

# VACCINES FOR CHILDREN

Established in 1994, the Vaccines for Children (VFC) Program is a federally funded program, overseen by the Advisory Committee on Immunization Practices (ACIP) and the Center for Disease Control (CDC), created to make vaccines available for children whose families can't afford them.

VFC providers are required to check and record refrigerator temperatures twice daily. With continuous monitoring, this process is easier, more organized, and reliable. Whether you need a single device to monitor your local office or a complete system to keep watch over a network of offices, Dickson offers a variety of services and product lines to best meet your needs.

With our VFC product bundles, the only choice you have to make is which data logger you'll be using. When you purchase the VFC version, it will come ready with our glycol thermistor sensor and a 1-Point NIST calibration.



# VFC PRODUCTS



TWE-VFC

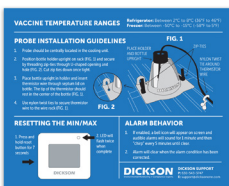


DWE-VFC



DSB-VFC

MODEL	BUNDLE INCLUDES	DICKSONWARE-ENABLED	PRICE
TWE-VFC	BUNDLE INCLUDES THE TWE, RTHM, AND N100	✓	\$729
DWE-VFC	BUNDLE INCLUDES THE DWE, RTHM, AND N100	✓	\$559
DSB-VFC	BUNDLE INCLUDES THE DSB, RSO20, N100, AND SW05	DICKSONWARE 2.0 INCLUDED	\$399

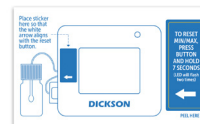


A351

## VFC MAGNET

Designed for placement on vaccine refrigerators. Provides information about vaccine storage, probe installation, and device behavior.

MODEL	PRICE
A351	\$5
A351-10 PACK	\$19
A351-50 PACK	\$79



A350

## RESET MIN/MAX STICKER

Provides instructions for resetting the min/max on the DWE, a device with a min/max reset button located on the side.

MODEL	PRICE
A350	\$4
A350-10 PACK	\$9
A350-50 PACK	\$29

FAST. EASY. COST-EFFECTIVE.

# REPLACEABLE SENSORS™

*Calibrate in less  
than a minute!*



## Meet the fastest way to calibrate.

Gone are the days of downtime. Now, with Dickson's patent pending Replaceable Sensors, you can continuously monitor without interruption when it's time to recalibrate. No need to power down or unplug your device—simply unplug the existing sensor and plug in the new sensor for instant calibration.



**REPLACEABLE™  
SENSORS  
BY DICKSON**

## WiZARD2 ON-PREMISE

COMPATIBLE WITH WIZARD2 SOFTWARE

If your environmental monitoring procedures require you to store your data locally, WiZARD2 offers unparalleled ease-of-use, scalability, and reliability. Simply place these data loggers throughout your facility and receive all data automatically at your PC.

Each logger features battery backup so you'll never lose data, even if your power goes out. If there is a problem, WiZARD2 alerts you via email or text message.



MODEL	DESCRIPTION	RANGE	ACCURACY	PRICE
WH345	WIRELESS TEMPERATURE & HUMIDITY DATA LOGGER	-20°F TO 185°F (-28°C TO 85°C) 0-95% RH NON-CONDENSING	+0.8°F FROM 20°F TO 122°F 1.8°F REMAINING (±0.44°C FROM -7°C TO 85°C 1°C REMAINING)	\$629
WT320	WIRELESS TEMPERATURE DATA LOGGER	-22°F TO 185°F (-28°C TO 85°C)	±1.2°F FROM 20°F TO 122°F 1.8°F (±1°C FROM -30°C TO 50°C)	\$595
WT330	WIRELESS VACCINE TEMPERATURE DATA LOGGER	-55° TO 122°F (-48°C TO 50°C)	±1.2°F FROM -20°F TO 120°F 1.8°F (±1°C FROM -30° TO 50°C)	\$605
WT335	WIRELESS VACCINE TEMPERATURE DATA LOGGER – DUAL	-55° TO 122°F (-48°C TO 50°C)	±1.2°F FROM -20°F TO 120°F 1.8°F (±1°C FROM -30° TO 50°C)	\$620
WT340	WIRELESS TEMPERATURE DATA LOGGER – KTC PROBE	-300°F TO 2000°F (-184°C TO 1093°C)*	±1.8°F FROM -22°F TO 122°F (±1.0°C FROM -30°C TO 50°C)	\$605
WT345	WIRELESS TEMPERATURE DATA LOGGER – DUAL KTC PROBE	-300°F TO 2000°F (-184°C TO 1093°C)*	±1.8°F FROM -22°F TO 122°F (±1.0°C FROM -30°C TO 50°C)	\$659
WT350	WIRELESS TEMPERATURE DATA LOGGER – RTD PROBE	-148°F TO 350°F (-100°C TO 176°C)	+0.5°F FROM -148°F TO 350°F (±0.3°C FROM -100°C TO 176°C)	\$749
WH645	ETHERNET TEMPERATURE & HUMIDITY DATA LOGGER	-22°F TO 185°F (-28°C TO 85°C) 0-95% RH NON-CONDENSING	+0.8°F FROM 20°F TO 122°F 1.8°F REMAINING (±0.44°C FROM -7°C TO 50°C 1°C REMAINING) ±2% RH FROM 0-60%; ±3% RH FROM 60-95%	\$629
WT630	ETHERNET VACCINE TEMPERATURE DATA LOGGER	-55°F TO 122°F (-48°C TO 50°C)	±1.2°F FROM -20°F TO 120°F 1.8°F (±1°C FROM -30°C TO 50°C)	\$605
WT640	ETHERNET TEMPERATURE DATA LOGGER – KTC PROBE	-300°F TO 2000°F (-184°C TO 1093°C)*	±1.8°F FROM -22°F TO 122°F 3.8°F REMAINING (±1°C FROM -30°C TO 50°C 2.1°C REMAINING)	\$605
WT650	ETHERNET TEMPERATURE DATA LOGGER – RTD PROBE	-148°F TO 350°F (-100° TO 176°C)	+0.5°F FROM -148°F TO 350°F (±0.3°C FROM -100°C TO 176°C)	\$749

FIRST GENERATION REPLACEABLE SENSOR™ INCLUDED WITH WH345/WH645. OTHER UNITS NOT COMPATIBLE WITH REPLACEABLE SENSORS™.

\*NOTE: For use above 500°F (260°C) A203 required.

## REPEATERS

The Repeater extends the distance of your network by forwarding the signal from out-of-range Wizard2 Wireless Loggers to the Wizard2 Wireless Receiver.

MODEL	DESCRIPTION	FREQUENCY	PRICE
WA300	WIRELESS REPEATER	900 MHZ (US)	\$214
WAG00	WIRELESS REPEATER	2.4 GHZ (INTL)	\$225



## RECEIVERS & SOFTWARE

The WiZARD2 receiver collects data from compatible WiZARD2 data loggers and stores that in a database on a local PC. The WiZARD2 Software allows users to configure their system, set alarms, and view the collected data.

MODEL	DESCRIPTION	FREQUENCY	21 CFR 11 COMPLIANT	EMAIL & TEXT ALERTS	PRICE
WR320	WIRELESS RECEIVER & SOFTWARE	900 MHZ (US)	-	-	\$369
WR323		900 MHZ (US)	-	✓	\$479
WR325		900 MHZ (US)	✓	✓	\$599
WRG20		2.4 GHZ (INTL)	-	-	\$339
WRG23		2.4 GHZ (INTL)	-	✓	\$450
WRG25		2.4 GHZ (INTL)	✓	✓	\$565

# INDICATORS

## MM120/125 VACCINE ALARM THERMOMETER

NO SOFTWARE REQUIRED

We recommend using the MM120 and MM125 as backup devices to data loggers that record temperature values over time. The FDA and CDC specifically recommend using data loggers with alarms to monitor vaccine storage.



MODEL	DESCRIPTION	RANGE	ACCURACY	PRICE
MM120	1-PROBE VACCINE ALARM THERMOMETER	50°F TO 122°F (-50°C TO 50°C)	±1.8°F FROM 0°F TO 122°F (±1°C FROM -18°C TO 50°C)	\$59
MM125	2-PROBE VACCINE ALARM THERMOMETER	-58°F TO 122°F (-50°C TO 50°C)	±1.8°F FROM 0°F TO 120°F (±1°C FROM -18°C TO 49°C)	\$69

## D182/186 INFRARED THERMOMETER

NO SOFTWARE REQUIRED

Spot check temperatures from a safe distance and get temperature readings in hard to reach places.

- Lightweight, easy-grip design
- Offers MAX temperature display during scan



MODEL	DESCRIPTION	EMISSIVITY	FIELD OF VIEW	RANGE	ACCURACY	PRICE
D182	NON-CONTACT INFRARED THERMOMETER	.1 TO 1.0 (ADJUSTABLE)	12:1	-58°F TO 986°F (-50°C TO 530°C)	±2% OF READING OR 2°C, WHICHEVER IS GREATER	\$79
D186	NON-CONTACT INFRARED THERMOMETER	.97	12:1	-67°F TO 536°F (-55°C TO 280°C)	±1°F FROM 32°F TO 150°F (±0.6°C FROM 0°C TO 66°C)	\$159

## TC/TH700 HANDHELD INDICATOR

NO SOFTWARE REQUIRED

Perfect for quick readings, these devices provide current temperature or temperature and humidity readings right at your fingertips. Simply stick your probe into the substance you want to monitor, and view its temperature on a jumbo touchscreen display.

- No-Slip Silicone Cover
- User Calibration
- Battery-powered
- Piercing K-Thermocouple probe with a coiled cord



MODEL	DESCRIPTION	RANGE	ACCURACY	PRICE
TC700	TOUCHSCREEN HANDHELD TEMPERATURE INDICATOR	-200°F TO 1999°F (-128°C TO 1093°C)	±1.8°F FROM -22°F TO 122°F (±1°C FROM -30°C TO 50°C)	\$299
TH700	TOUCHSCREEN HANDHELD TEMPERATURE AND HUMIDITY INDICATOR	-40°F TO 185°F (-40°C TO 85°C) 0 TO 95% RH (NON-CONDENSING)	±0.8°F FROM 20°F TO 122°F (±0.45°C FROM -6°C TO 50°C)	\$299

REPLACEABLE SENSORS™

With Dickson's Replaceable Sensors™, you can recalibrate any compatible device on the fly without having to send in your device. Just order a newly calibrated sensor, receive it in the mail, and plug it into the unit in a motion that's as simple as swapping batteries in your television remote.

THIRD GENERATION

COMPATIBLE WITH DSB



RS010  
RS050



RS020



RS021



RS030



RS031



RS040

MODEL	DESCRIPTION	RANGE	ACCURACY	PRICE
RS010	AMBIENT TEMPERATURE AND HUMIDITY SENSOR	-40°F TO 185°F (-40°C TO 85°C)	±0.8°F FROM 20°F TO 120°F 1.2°F (±0.44°C FROM -40° TO 85°C 0.66°C) ±2%RH FROM 5° TO 95%RH	\$119
RS020	SINGLE TEMPERATURE THERMISTOR WITH BUFFER	-58°F TO 158°F (-50°F TO 70°C)	±0.9°F FROM -58°F TO 68°F (±0.5°C FROM -50° TO 20°C)	\$110
RS021	DUAL TEMPERATURE THERMISTOR WITH BUFFER	-58°F TO 158°F (-50°C TO 70°C)	±0.9°F FROM -58°F TO 68°F (±0.5°C FROM -50°C TO 20°C)	\$129
RS030	SINGLE K-THERMOCOUPLE TEMPERATURE SENSOR	-300°F TO 2000°F (-184°C TO 1093°C)	±1.8°F FROM -22°F TO 122°F 3.8°F (±1°C FROM -30°C TO 50°C 2.1°C)	\$110
RS031	DUAL K-THERMOCOUPLE TEMPERATURE SENSOR	-300°F TO 2000°F (-184°C TO 1093°C)	±1.8°F FROM -22°F TO 122°F 3.8°F (±1°C FROM -30°C TO 50°C 2.1°C)	\$129
RS040	PLATINUM RTD TEMPERATURE SENSOR	-148°F TO 350°F (-100°C TO 176°C)	±0.5°F FROM -148°F TO 350°F (±0.3°C FROM -100°C TO 176°C)	\$225
RS050	AMBIENT TEMPERATURE SENSOR	-22°F TO 122°F (-30°C TO 50°C)	±1.2°F FROM 20°F TO 122°F (±1°C FROM -30°C TO 50°C)	\$110

## SECOND GENERATION

COMPATIBLE WITH DWE, TWE, TWP, TSB



MODEL	DESCRIPTION	RANGE	ACCURACY	PRICE
RKTC	SINGLE K-THERMOCOUPLE TEMPERATURE SENSOR	-300°F TO 2000°F (-184°C TO 1093°C)	±1.8°F FROM -22°F TO 122°F (±1°C FROM -30°C TO 50°C)	\$110
RKTC2	DUAL K-THERMOCOUPLE TEMPERATURE SENSOR	-300°F TO 2000°F (-184°C TO 1093°C)	±1.8°F FROM -22°F TO 122°F (±1°C FROM -30°C TO 50°C)	\$129
RTHM	SINGLE GLYCOL THERMISTOR SENSOR	-58°F TO 158°F (-50°C TO 70°C)	±0.9°F FROM -58°F TO 68°F (±0.5°C FROM -58°C TO 20°C)	\$110
RTHM2	DUAL GLYCOL THERMISTOR SENSOR	-58°F TO 158°F (-50°C TO 70°C)	±0.9°F FROM -58°F TO 68°F (±0.5°C FROM -58°C TO 20°C)	\$129
RTMP	TEMPERATURE SENSOR	-22°F TO 122°F (-30°C TO 50°C)	±1.2°F FROM 20°F TO 122°F (±0.7°C FROM -7°C TO 50°C)	\$110
RTMP-R	RIGHT ANGLE TEMPERATURE SENSOR	-22°F TO 122°F (-30°C TO 50°C)	±1.2°F FROM 20°F TO 122°F (±0.7°C FROM -7°C TO 50°C)	\$110
RTRH	TEMPERATURE AND HUMIDITY SENSOR	-40°F TO 185°F (-40°C TO 85°C)	±0.8°F FROM 20°F TO 122°F (±0.4°C FROM -6.7°C TO 50°C) ±2% RH FROM 5% TO 95% RH	\$119
RTRH-R	RIGHT ANGLE TEMPERATURE & HUMIDITY SENSOR	-40°F TO 185°F (-40°C TO 85°C)	±0.8°F FROM 20°F TO 122°F (±0.4°C FROM -6.7°C TO 50°C) ±2% RH FROM 5% TO 95% RH	\$119
RRTD	PLATINUM TEMPERATURE SENSOR (6FT CABLE)	-148°F TO 350°F (-100°C TO 176°C)	±0.5°F FROM -148°F TO 350°F (±0.3°C FROM -100°C TO 176°C)	\$225
RS080	DIFFERENTIAL PRESSURE SENSOR (2")	± 2 INCHES H <sub>2</sub> O	±3% FROM -2 TO 2 INCHES H <sub>2</sub> O	\$149
RS081	DIFFERENTIAL PRESSURE SENSOR (0.5")	± 0.5 INCHES H <sub>2</sub> O	±3% FROM 0.5 TO 0.5 INCHES H <sub>2</sub> O	\$149

## FIRST GENERATION

COMPATIBLE WITH CHART RECORDERS, WIZARD

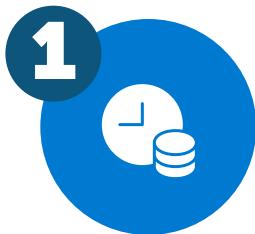


MODEL	DESCRIPTION	RANGE	ACCURACY	PRICE
R200	AMBIENT TEMPERATURE & HUMIDITY SENSOR – RIGHT ANGLE	-40°F TO 185°F (-40°C TO 85°C)	±0.8°F FROM 20°F TO 122°F 1.8°F (±0.4°C FROM -6.7°C TO 50°C 1°C) ±2% RH FROM 5% TO 95% RH	\$119
R250	AMBIENT TEMPERATURE & HUMIDITY SENSOR	-40° TO 185°F (-40°C TO 85°C)	±0.8°F FROM 20°F TO 122°F 1.8°F (±0.4°C FROM -6.7°C TO 50°C 1°C) ±2% RH FROM 5% TO 95% RH	\$119
R300	AMBIENT TEMPERATURE SENSOR – RIGHT ANGLE	-148°F TO 350°F (-100°C TO 176°C)	±1.2°F FROM 20° TO 122°F (±1°C FROM -30°C TO 50°C)	\$110
R400	SINGLE K-THERMOCOUPLE TEMPERATURE SENSOR	-300°F TO 2000°F (-184°C TO 1093°C)	±1.8°F FROM -22°F TO 122°F (±1°C FROM -30°C TO 50°C)	\$110
R500	SINGLE TEMPERATURE THERMISTOR WITH BUFFER	-58°F TO 160°F (-50°C TO 71°C)	±0.9°F FROM -58°F TO 68°F (±0.5°C FROM -58°C TO 20°C)	\$110
R600	PLATINUM RTD TEMPERATURE SENSOR	-148°F TO 350°F (-100°C TO 176°C)	±0.5°F FROM -148°F TO 350°F (±0.3°C FROM -100°C TO 176°C)	\$229
R700	DUAL K-THERMOCOUPLE TEMPERATURE SENSOR	-300°F TO 2000°F (-184°C TO 1093°C)	±1.8°F FROM -22°F TO 122°F (±1°C FROM -30°C TO 50°C)	\$129
R800	DUAL TEMPERATURE THERMISTOR WITH BUFFER	-58°F TO 160°F (-50°C TO 71°C)	±1.2°F FROM 69°F TO 122°F (±0.7°C FROM 21°C TO 70°C)	\$129



# 5 REASONS

It's Time to Consider  
Upgrading from Chart  
Recorders to Data Loggers



## TIME & RESOURCES

Chart recorders have high ongoing operational expenses in the form of consumables like paper and pens, plus the need for physical storage space for paper records. Moving from chart recorders to digital monitoring reduces unnecessary waste of both time and resources, which could be better spent on your core business.



## DATA ANALYSIS

Backing up, archiving, and retrieving data requires significant time with a chart recorder, but when using data loggers, this process is seamless and requires little or no effort by the user. Data from a chart recorder isn't automatically backed up, meaning that any physical damage to the paper records could result in loss of critical data.



## SOFTWARE CAPABILITIES

Advances in wireless communication have made it possible to connect a network of data loggers to central monitoring and processing software tools like DicksonOne. With this approach, environmental data from many locations can be monitored in real time, and processed as a single data set. These capabilities are unavailable to chart recorders.



## REGULATORY COMPLIANCE

In some highly regulated industries, monitoring data is preserved for a fixed period of time, typically 12 to 36 months. Data loggers, particularly cloud-enabled systems, meet these requirements with no additional action needed. Paper records, on the other hand, require meticulous organization and storage to meet these requirements.



## ALARMS & CUSTOMIZATION

The combination of data loggers and real-time monitoring is especially powerful to ensure fast, efficient, and proactive responses to excursions. This is mainly achieved through customized, targeted alerts to specific people when a dangerous condition is detected. At best, a chart recorder can provide a record of what happened during an excursion.

To read the full article, [click here](#).

8" CHART RECORDERS

8" (203mm) chart recorders offer the largest resolution out of any chart recorders. All chart recorders feature a large 8" chart and user-selectable recording time-frames (1-day, 1-week, 1-month) and ranges.

Temperature and Temperature & Humidity units are compatible with Replaceable Sensors™, making calibrating your chart recorder easier than ever, and offer features such as displays, audible alarms, battery operation, and KTC probes.

Pressure units offer features such as splash-proof cases with IP66 rating, corrosion-resistant cases, and single AA battery operation.



KT8P2



PW861

MODEL	VARIABLE	RANGE	DISPLAY	POWER SOURCE	BATTERY BACKUP	ALARM	PROBE(S)	REPLACEABLE SENSOR(S)™	PRICE
KT8P0	TEMPERATURE	BASED ON CHART	✓	BATTERY	-	-	✓	✓	\$485
KT8P2	TEMPERATURE	BASED ON CHART	✓	AC POWER	✓	-	✓	✓	\$545
KT8P3	TEMPERATURE	BASED ON CHART	✓	AC POWER	✓	✓	✓	✓	\$660
KT856	TEMPERATURE	BASED ON CHART	✓	AC POWER	✓	✓	✓	✓	\$845
TH8P0	TEMPERATURE & HUMIDITY	32°F TO 122°F (0°C TO 50°C) 0-95% RH NON-CONDENSING	-	BATTERY	-	-	✓	✓	\$569
TH8P2	TEMPERATURE & HUMIDITY	BASED ON CHART	✓	AC POWER	✓	-	✓	✓	\$660
TH8P3	TEMPERATURE & HUMIDITY	BASED ON CHART	✓	AC POWER	✓	✓	✓	✓	\$789
TH8P5	TEMPERATURE & HUMIDITY	BASED ON CHART	✓	AC POWER	✓	✓	✓	✓	\$845
PW860	PRESSURE	0-100 PSI, 7-DAY	-	BATTERY	-	-	-	-	\$729
PW861	PRESSURE	0-100 PSI, 24-HR	-	BATTERY	-	-	-	-	\$729
PW864	PRESSURE	0-200 PSI, 7-DAY	-	BATTERY	-	-	-	-	\$729
PW865	PRESSURE	0-200 PSI, 24-HR	-	BATTERY	-	-	-	-	\$729
PW866	PRESSURE	0-300 PSI, 7-DAY	-	BATTERY	-	-	-	-	\$729
PW867	PRESSURE	0-300 PSI, 24-HR	-	BATTERY	-	-	-	-	\$729
PW875	PRESSURE	0-1000 PSI, 24-HR	-	BATTERY	-	-	-	-	\$865
ET855	UNIVERSAL	BASED ON CHART	✓	AC POWER	✓	✓	-	-	\$719

⚠ DON'T FORGET TO ORDER CHARTS/PENS. COMPATIBLE WITH FIRST GENERATION REPLACEABLE SENSORS™

## 6" CHART RECORDERS

6" (152mm) chart recorders are a great size for monitoring refrigerators and freezers. All chart recorders feature a mid-sized 6" chart and user-selectable recording time-frames (1-day, 1-week, 1-month) and ranges.

### CHOOSE FROM THE FOLLOWING FEATURES:

- Replaceable Sensor(s)<sup>TM</sup> (Included with unit)
- Display
- Audible Alarms
- K-Thermocouple Temperature or Remote Temperature/Humidity Probe



MODEL	VARIABLE	RANGE	DISPLAY	POWER SOURCE	BATTERY BACKUP	ALARM	PROBE(S)	REPLACEABLE SENSOR(S) <sup>TM</sup>	PRICE
KT6P1	TEMPERATURE	BASED ON CHART	-	AC POWER	✓	-	✓	✓	\$429
KT6P2	TEMPERATURE	BASED ON CHART	✓	AC POWER	✓	-	✓	✓	\$545
KT6P5	TEMPERATURE	BASED ON CHART	✓	AC POWER	✓	✓	✓	✓	\$695
TH6P1	TEMPERATURE & HUMIDITY	32°F TO 122°F (0°C TO 50°C) 0-95% RH NON-CONDENSING	-	AC POWER	✓	-	-	✓	\$569
TH6P2	TEMPERATURE & HUMIDITY	32°F TO 122°F (0°C TO 50°C) 0-95% RH NON-CONDENSING	✓	AC POWER	✓	-	✓	✓	\$660
TH6P3	TEMPERATURE & HUMIDITY	0°F TO 122°F (0°C TO 50°C) 0-95% RH NON-CONDENSING	✓	AC POWER	✓	✓	✓	✓	\$789

ⓘ DON'T FORGET TO ORDER CHARTS/PENS. COMPATIBLE WITH FIRST GENERATION REPLACEABLE SENSORS<sup>TM</sup>

## 4" CHART RECORDERS

A great size coupled with 2-3 year battery life makes this 4-inch (101mm) temperature chart recorder a great solution for refrigerators, freezers, and HVAC applications.

### ALL MODELS INCLUDE:

- 7-Day or 24-Hour recording
- 2-3 year battery life
- Single AA battery operation



MODEL	VARIABLE	RANGE	DISPLAY	POWER SOURCE	ALARM	PROBE(S)	PRICE
SL4100	TEMPERATURE	0°F TO 100°F (-18°C TO 37°C)	-	BATTERY	-	✓	\$279
SL4350	TEMPERATURE	-22°F TO 122°F (-30°C TO 50°C)	✓	BATTERY	-	✓	\$279
PW470	PRESSURE	0-100 PSI, 7-DAY OR 24-HR	✓	BATTERY	✓	✓	\$524
PW474	PRESSURE	0-200 PSI, 7-DAY OR 24-HR	-	BATTERY	-	-	\$524
PW476	PRESSURE	0-300 PSI, 7-DAY OR 24-HR	✓	BATTERY	-	✓	\$524
PW479	PRESSURE	0-500 PSI, 24-HR	✓	BATTERY	✓	✓	\$524

ⓘ DON'T FORGET TO ORDER CHARTS AND PENS

### 3" CHART RECORDERS

Small enough to fit in your hand, ideal when space is a concern. Dickson 3-inch (76mm) temperature chart recorders offer a unique monitoring alternative. Great for tight spaces and tight budgets.



SC387

#### CHOOSE FROM THE FOLLOWING FEATURES:

- Optional 7-Day or 24-Hour recording
- C/F Switchable

MODEL	VARIABLE	RANGE	ROTATION	POWER SOURCE	BATTERY LIFE	PRICE
SC367	TEMPERATURE	-14°F TO 32°F (-25°C TO 0°C)	24-HOURS OR 7-DAYS	BATTERY	2 YEARS	\$279
SC377	TEMPERATURE	4°F TO 50°F (-15°C TO 10°C)	24-HOURS OR 7-DAYS	BATTERY	2 YEARS	\$279
SC386	TEMPERATURE	22°F TO 68°F (-5°C TO 20°C)	24-HOURS OR 7-DAYS	BATTERY	2 YEARS	\$279
SC387	TEMPERATURE	50°F TO 96°F (10°C TO 35°C)	24-HOURS OR 7-DAYS	BATTERY	2 YEARS	\$279
SC397	TEMPERATURE	76°F TO 122°F (25°C TO 50°C)	24-HOURS OR 7-DAYS	BATTERY	2 YEARS	\$279



**DON'T FORGET TO ORDER CHARTS AND PENS**

### PENS

AUTHENTIC DICKSON CHARTS AND PENS ARE REQUIRED TO ACHIEVE STATED ACCURACY.

- Dickson pens accurately record your vital data
- Pens available in multiple colors for two channel monitoring

MODEL	DESCRIPTION	VARIABLE	DICKSON AUTHENTIC	PRICE
P222	6 RED PENS	TEMPERATURE	✓	\$58
P226	6 BLUE PENS	HUMIDITY	✓	\$58
P246	3 RED, 3 BLUE PENS	TEMPERATURE & HUMIDITY	✓	\$58
P266	3 RED, 3 BLUE PENS	DUAL CHANNEL	✓	\$58



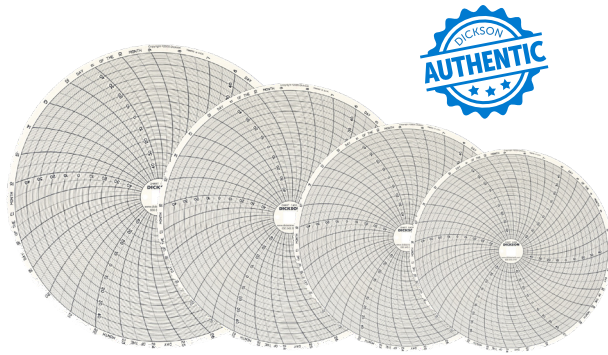
### CALIBRATION

When strict environmental conditions are required, it's important to have trusted, accurate sensors that have been calibrated to traceable National Standards.

TYPE	INCLUDED DOCUMENTATION	CALIBRATION/ RECALIBRATION
STANDARD	-	-
N100 / N150	1-POINT NIST CALIBRATION AND CERTIFICATE	\$99 / \$156
N300 / N350	3-POINT NIST CALIBRATION AND CERTIFICATE	\$156 / \$209
N400 / N450	3-POINT NIST & A2LA CALIBRATION AND CERTIFICATION	\$269 / \$315
N550	3-POINT NIST CALIBRATION WITH BEFORE DATA CERTIFICATE	\$269
N995	CUSTOM CALIBRATION POINT	\$69

# CHARTS

AUTHENTIC DICKSON CHARTS AND PENS ARE REQUIRED TO ACHIEVE STATED ACCURACY. NOT INCLUDED WITH INSTRUMENT.



## 8" (203MM)

FOR MODEL	RANGE	24 HR CHART	7 DAY CHART	31 DAY CHART	QTY	PRICE
KT8P0	0° TO 100°F/C	C410	C412	-	60	\$54
	-20° TO 20°F/C	C445	C448	-	60	\$54
	-50° TO 50°F/C	C411	C414	-	60	\$54
	0° TO 150°F/C	C425	C435	-	60	\$54
	0° TO 250°F/C	C432	C439	-	60	\$54
	0° TO 500°F/C	C428	C459	-	60	\$54
	0° TO 1000°F/C	C441	C440	-	60	\$54
KT8P2	0° TO 2000°F	C443	C444	-	60	\$54
	-20° TO 20°F/C	C445	C448	-	60	\$54
	-50° TO 50°F/C	C411	C414	C406	60	\$54
	0° TO 60°F/C	C429	-	-	60	\$54
	0° TO 100°F/C	C410	C412	C409	60	\$54
	0° TO 150°F/C	C425	C435	-	60	\$54
	0° TO 250°F/C	C432	C439	C407	60	\$54
	0° TO 500°F/C	C428	C459	C408	60	\$54
	0° TO 1000°F/C	C441	C440	-	60	\$54
	0° TO 2000°F	C443	C444	-	60	\$54
KT8P3 KT856	-20° TO 20°F/C	C445	C448	-	60	\$54
	-50° TO 50°F/C	C411	C414	C406	60	\$54
	0° TO 100°F/C	C410	C412	C409	60	\$54
	0° TO 150°F/C	C425	C435	-	60	\$54
	0° TO 250°F/C	C432	C439	C407	60	\$54
	0° TO 500°F/C	C428	C459	C408	60	\$54
	0° TO 1000°F/C	C441	C440	-	60	\$54
	0° TO 2000°F	C443	C444	-	60	\$54
TH8P0	-20°F TO 120°F	C415	C417	-	60	\$54
	-20°C TO 50°C	C472	C473	-	60	\$54
	-20°F TO 120°F	C415	C417	-	60	\$54
TH8P2	-20°C TO 50°C	C472	C473	C482	60	\$54
	40°F TO 110°F	C476	C477	C481	60	\$54
	5°C TO 40°C	C478	C479	C483	60	\$54
	-20°F TO 120°F	-	-	C480	60	\$54
TH8P3 TH8P5	-20°F TO 120°F	C415	C417	-	60	\$54
	-20°C TO 50°C	C472	C473	C482	60	\$54
	0° TO 200°F	-	C437	-	60	\$54
	0° TO 200° OR 0° TO 185° PSI/F	C458	-	-	60	\$54
	40°F TO 110°F	C476	C477	C481	60	\$54
	5°C TO 40°C	C478	C479	C483	60	\$54
	-20°F TO 120°F	-	-	C480	60	\$54
PW860	0 TO 100 PSI	-	C412	-	60	\$54
PW861	0 TO 100 PSI	C410	-	-	60	\$54
PW864	0 TO 200 PSI	-	C436	-	60	\$54
PW865	0 TO 200 PSI	C456	-	-	60	\$54
PW866	0 TO 300 PSI	-	C431	-	60	\$54
PW867	0 TO 300 PSI	C422	-	-	60	\$54
PW875	0 TO 1000 PSI	C441	-	-	60	\$54

## 6" (152MM) CHARTS

FOR MODEL	RANGE	24 HR CHART	7 DAY CHART	31 DAY CHART	QTY	PRICE
KT6P1 KT6P2 KT6P5	-50° TO 50° F/C	C652	C651	-	60	\$54
	0° TO 50° OR -50° TO 0° F/C	C654	C653	-	60	\$54
	0° TO 100° F/C	C658	C657	-	60	\$54
	0° TO 250° F/C	C660	C659	-	60	\$54
	0° TO 500° F	C662	C661	-	60	\$54
	50° TO 100° F/C	C656	C655	-	60	\$54
TH6P1 TH6P2	0° TO 100° F/C	C658	C657	-	60	\$54
	0° TO 50° C	C664	C663	-	60	\$54
TH6P3	0° TO 100° F/C	C658	C657	-	60	\$54
	0° TO 50° C	C664	C663	-	60	\$54
	0° TO 200° F/C	-	C665	-	60	\$54
	0° TO 200°F	C667	-	-	60	\$54

## 4" (101MM) CHARTS

FOR MODEL	RANGE	24 HR CHART	7 DAY CHART	31 DAY CHART	QTY	PRICE
SL4100	0° TO 100°F/C	C010	C012	-	60	\$54
	-18° TO 37°C	C209	C210	-	60	\$54
SL4350	-30° TO 50°C	C180	C181	-	60	\$54
	-22° TO 122°F	C205	C206	-	60	\$54
PW470	0 TO 100 PSI	C010	C012	-	60	\$54
PW474	0 TO 200 PSI	C026	C040	-	60	\$54
PW476	0 TO 300 PSI	C022	C036	-	60	\$54
PW479	0 TO 500 PSI	C028	C056	-	60	\$54

## 3" (76MM) CHARTS

FOR MODEL	RANGE	24 HR CHART	7 DAY CHART	31 DAY CHART	QTY	PRICE
SC367	-14° TO 32°F	C301	C302	-	60	\$54
	-25° TO 0°C	C309	C310	-	60	\$54
SC377	4° TO 50°F	C303	C304	-	60	\$54
	-15° TO 10°C	C311	-	-	60	\$54
SC386	-5° TO 20°C	C317	C318	-	60	\$54
	22° TO 68°F	C319	C320	-	60	\$54
SC387	50° TO 96°F	C305	C306	-	60	\$54
	10° TO 35°C	C313	C314	-	60	\$54
SC397	76° TO 122°F	C307	C308	-	60	\$54
	25° TO 50°C	C315	C316	-	60	\$54

## SOFTWARE

## DICKSONWARE™

DicksonWare™ is a standalone software program for use with Dickson's USB-enabled loggers, allowing you to download your environmental data to your PC. Viewing, analyzing, and sharing logged data with others in your organization has never been easier. For more information, visit [DicksonData.com/Dicksonware](http://DicksonData.com/Dicksonware).

- Easy installation
- Microsoft Windows® compatible
- Easy logger setup and data downloads
- Data visualization with tables and graphs
- Real-time monitoring



MODEL	DESCRIPTION	FEATURES	DOWNLOAD CABLE	PRICE
SW01	DICKSONWARE™ 2.0 SOFTWARE	NON-21 CFR 11 COMPLIANT	NO CABLE	\$69
SW03	DICKSONWARE™ 2.0 SOFTWARE	NON-21 CFR 11 COMPLIANT	MINI USB	\$89
SW05	DICKSONWARE™ 2.0 SOFTWARE	NON-21 CFR 11 COMPLIANT	MICRO USB	\$89
SW02	DICKSONWARE™ 2.0 SECURE SOFTWARE	21-CFR 11 COMPLIANT	NO CABLE	\$179
SW04	DICKSONWARE™ 2.0 SECURE SOFTWARE	21-CFR 11 COMPLIANT	MINI USB	\$199
SW06	DICKSONWARE™ 2.0 SECURE SOFTWARE	21-CFR 11 COMPLIANT	MICRO USB	\$199
SW010	DICKSONWARE™ 10-SEAT LICENSE	MUST BE PURCHASED IN CONJUNCTION WITH SOFTWARE	-	\$350
SW025	DICKSONWARE™ 25-SEAT LICENSE	MUST BE PURCHASED IN CONJUNCTION WITH SOFTWARE	-	\$750
SW050	DICKSONWARE™ 50-SEAT LICENSE	MUST BE PURCHASED IN CONJUNCTION WITH SOFTWARE	-	\$1,250
A015	DICKSONWARE™ LEGACY SOFTWARE	NON-21 CFR 11 COMPLIANT	SERIAL CABLE	\$89
A016	DICKSONWARE™ LEGACY SOFTWARE	NON-21 CFR 11 COMPLIANT	MINI USB	\$89
A025	DICKSONWARE™ LEGACY SECURE SOFTWARE	21-CFR 11 COMPLIANT	SERIAL CABLE	\$199
A026	DICKSONWARE™ LEGACY SECURE SOFTWARE	21-CFR 11 COMPLIANT	MINI USB	\$199

## WIZARD2 SOFTWARE

NO RECEIVER INCLUDED.

WiZARD2 Software allows users to configure their system, set alarms, and view the collected data.

- Email and Text alerts available
- Data automatically downloaded to your computer wirelessly
- Loggers continue to log in the event of a power outage

MODEL	DESCRIPTION	21 CFR 11 COMPLIANT	EMAIL & TEXT ALERTS	PRICE
SW500	WIZARD2 SOFTWARE	-	-	\$29
SW501	WIZARD2 SOFTWARE	-	✓	\$89
SW502	WIZARD2 SOFTWARE	✓	✓	\$199



# ACCESSORIES

## BATTERIES



MODEL	DESCRIPTION	PRODUCT COMPATIBILITY	PRICE
A124	CR2450 BATTERY	SP125, SP175, TP125, SK550, TK550	\$16
A125	123A BATTERY	PR125, PR325, PR525	\$16
A126	AA LITHIUM BATTERIES (4PK)	-	\$34
R006	AA BATTERY	-	\$6
R007	9V BATTERY	SM720, SM725, TM725, TC700, TH700	\$11
R163	AA BATTERY	PR100, PR300, PR500	\$15
R165	AA BATTERY	SP200, SP300, TP220, TP320	\$15
R170	BATTERY TLH-5955	HT200, HT220, HT225	\$24

## EXTENSION CABLES



MODEL	DESCRIPTION	PRODUCT COMPATIBILITY	PRICE
A062	10' AC ADAPTER EXTENSION CABLE	PAIRS WITH R157 AC ADAPTERS	\$19
A063	8' AC ADAPTER EXTENSION CABLE	R180 AC ADAPTERS	\$29
A175	6' USB EXTENSION CABLE (A MALE TO A FEMALE)	-	\$5
A202	100' THERMOCOUPLE EXTENSION	ALL KTC PROBES	\$199
A896	10' PROBE EXTENSION CABLE	FIRST GENERATION REPLACEABLE SENSORS™	\$49
A897	1' SENSOR EXTENSION CABLE	SECOND GENERATION REPLACEABLE SENSORS™	\$49
A898	10' SENSOR EXTENSION CABLE	SECOND GENERATION REPLACEABLE SENSORS™	\$54
A900	10' SENSOR EXTENSION CABLE	THIRD GENERATION REPLACEABLE SENSORS™	\$49
A902	25' SENSOR EXTENSION CABLE	SECOND GENERATION REPLACEABLE SENSORS™	\$79
D617	10' PROBE EXTENSION	ALL KTC PROBES	\$55

## USB CABLES



MODEL	DESCRIPTION	PRODUCT COMPATIBILITY	PRICE
A061	6' MINI USB DOWNLOAD CABLE	DATA LOGGERS CONTAINING MINI USB PORTS	\$19
A073	6' MICRO USB CABLE	DATA LOGGERS CONTAINING MICRO USB PORTS	\$19
A074	USB WALL PLUG	DSB	\$29
A170	USB ADAPTER	DATA LOGGERS WITH SERIAL PORTS	\$69
A175	6' USB EXTENSION CABLE (A MALE TO A FEMALE)	-	\$5

# DICKSON

## SERIAL CABLES



MODEL	DESCRIPTION	PRODUCT COMPATIBILITY	PRICE
A060	6' SERIAL DOWNLOAD CABLE	DATA LOGGERS CONTAINING SERIAL PORTS	\$49

## POWER ADAPTERS AND PLUGS



MODEL	DESCRIPTION	PRODUCT COMPATIBILITY	PRICE
A062	10' AC ADAPTER EXTENSION CABLE	PAIRS WITH R157 AC ADAPTERS	\$19
A063	8' AC ADAPTER EXTENSION CABLE	R180 AC ADAPTERS	\$29
A074	USB WALL PLUG	DSB	\$29
A075	6' AC ADAPTER + USB WALL PLUG	DSB	\$34
A076	INTERNATIONAL ADAPTER KIT	-	\$32
A170	USB ADAPTER	DATA LOGGERS WITH SERIAL PORTS	\$69
A255	POE ADAPTER	DWE	\$34
R065	UNIVERSAL PLUG KIT FOR DATA LOGGERS	DEVICES WITH STEREO JACK TYPE POWER ADAPTER	\$32
R066	UNIVERSAL PLUG KIT FOR DATA LOGGERS	DEVICES WITH BARREL TYPE POWER ADAPTER	\$32
R157	6' AC ADAPTER	CHART RECORDERS, STANDARD DATA LOGGERS, WIZARD	\$34
R180	6' REPLACEMENT AC ADAPTER	TSB, TWE, TWP, DWE, TH8P0/2/3/5, KT8P2/3, KT6P1/2/5	\$34

## PROBES



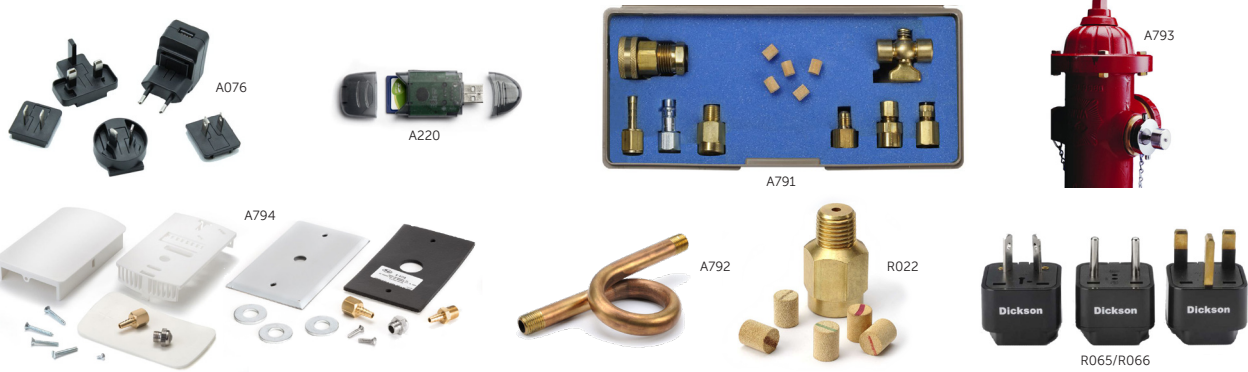
MODEL	DESCRIPTION	PRODUCT COMPATIBILITY	PRICE
A203	6" HIGH TEMPERATURE IMMERSION PROBE	KTC UNITS	\$139
D611	15' SHIELDED IMMERSION PROBE WITH 4" STAINLESS STEEL TIP	KTC UNITS	\$165
R013	REPLACEMENT BEAD WIRE K-THERMOCOUPLE PROBE	KTC UNITS	\$44

## BUFFERS



MODEL	DESCRIPTION	BOTTLE MATERIAL	SIZE	PRICE
A341	GLYCOL BOTTLE WITH HOLDER (BOTTLE SHAPE MAY VARY)	PLASTIC	5ML	\$34
A342	GLASS BEAD BOTTLE WITH HOLDER (BOTTLE SHAPE MAY VARY)	GLASS	5ML	\$34
A081	BUFFER BOTTLE HOLDERS-SINGLE	-	-	\$5
A077	BUFFER BOTTLE HOLDERS - 10PK	-	-	\$19
A078	BUFFER BOTTLE HOLDERS - 25PK	-	-	\$45
A079	BUFFER BOTTLE HOLDERS-50PK	-	-	\$85
A080	BUFFER BOTTLE HOLDERS-100PK	-	-	\$159

KITS



MODEL	DESCRIPTION	PRODUCT DETAILS	PRICE
A076	INTERNATIONAL ADAPTER KIT	5V, 5W, USB A RECEPTACLE, MULTI-BLADE	\$32
A220	CARD READER KIT	CARD READER AND REMOVABLE SD FLASH CARD	\$49
A791	PRESSURE KIT	GARDEN HOSE ADAPTER, HOSE BARB FITTING, QUICK FEMALE COUPLER NIPPLE, FILTER TYPE PULSATION SNUBBER, LEVER HANDLE SHUT-OFF COCK, COPPER TUBE FLARE FITTING, POLYETHYLENE TUBE COMPRESSION FITTING, COPPER TUBE COMPRESSION FITTING	\$169
A792	PRESSURE PIGTAIL	USED WHEN MONITORING THE PRESSURE OF STEAM TO PROTECT SENSOR	\$44
A793	HYDRANT KIT	CHROME PLATED ADAPTER TO CONVERT OPENING OF HYDRANT TO 1/4" NPT CONNECTOR	\$169
A794	DIFFERENTIAL PRESSURE ACCESSORY KIT	FOR INSTALLING DIFFERENTIAL PRESSURE MONITORING UNITS	\$79
R022	PRESSURE FILTER KIT	SNUBBER, 40-MICRON SEDIMENT FILTER, 30-MICRON SEDIMENT FILTER, 25-MICRON SEDIMENT FILTER, 20-MICRON SEDIMENT FILTER, 10-MICRON SEDIMENT FILTER	\$34
R065	UNIVERSAL PLUG KIT FOR DATA LOGGERS	FOR DEVICES WITH STEREO JACK TYPE POWER ADAPTER	\$34
R066	UNIVERSAL PLUG KIT FOR DATA LOGGERS	FOR DEVICES WITH BARREL TYPE POWER ADAPTER	\$34

CASES



MODEL	DESCRIPTION	PRODUCT DETAILS	PRICE
A713	WATER-RESISTANT POUCH*	USED TO PROTECT LOGGERS FROM CONDITIONS WHERE CONDENSATION MAY OCCUR	\$52
A715	LOCKING WALL-MOUNTED CASE (SMALL)	FOR PROTECTING A LOGGER FROM TAMPERING	\$52
A720	LOCKING CASE	FOR USE WITH PR150/350	\$74
A721	LOCKING CASE	FOR USE WITH PR125/325/525	\$84

\*NO DICKSON UNIT IS SUITABLE FOR CONDITIONS GREATER THAN 95% RH UNLESS OTHERWISE INDICATED.

FILTERS



MODEL	DESCRIPTION	PRODUCT DETAILS	PRICE
A867	PROBE DUST FILTER	PREVENTS DEBRIS FROM ENTERING YOUR TEMPERATURE/HUMIDITY PROBE	\$49
A868	SENSOR DUST FILTER	PREVENTS DEBRIS FROM ENTERING YOUR TEMPERATURE/HUMIDITY SENSOR	\$49

MAPPING

ARE YOUR PRODUCTS STORED SAFELY?

Mapping the differences and changes in temperature and relative humidity within a three-dimensional space can be a daunting task, but the data is invaluable. Let us help keep your business fully compliant by documenting temperature and relative humidity distribution and provide you with data-driven rationale for permanent monitoring placement to protect your environmentally sensitive products.



WAREHOUSE MAPPING

Temperature and humidity can impact materials in your warehouse. Locating the hot and cold spots now can mean less spoiled product and fewer failed audits later.



COLD STORAGE MAPPING

Every refrigerator and freezer has its own nuances. Is the temperature distribution even? A successful mapping will ensure your storage systems adhere to safety standards.



CHAMBER MAPPING

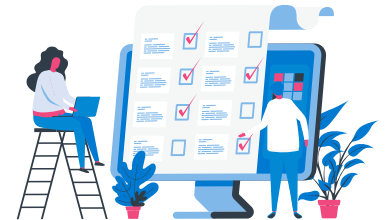
Are your chambers' conditions equal on the top and bottom shelves? Understanding the exact environmental conditions of any chamber is critical to ensure repetition and accuracy.

DESCRIPTION	PRICE
MAPPING STUDY	CALL 630.563.4219 FOR OPTIONS AND PRICING

VALIDATION

ARE YOUR SYSTEMS OPERATING AS INTENDED?

Our team of compliance experts will help you meet your validation needs from start to finish. We'll test every aspect, ensure no detail is overlooked, and document the proper working order of your equipment or software system. With their expertise, you'll have documentation in hand that stands up to audits.



IQ INSTALLATION QUALIFICATION

Let us verify your equipment has been properly installed and that it is ready to work per your specifications. Once that's in place we will work to establish a baseline for the equipment.

OQ OPERATIONAL QUALIFICATION

We will confirm your equipment operates appropriately within its defined operating parameters. You will also receive verification that your system meets its design specifications.

PQ PERFORMANCE QUALIFICATION

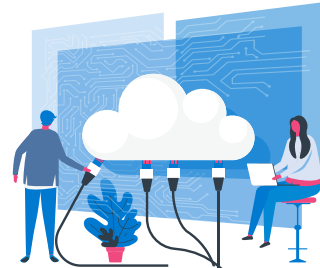
Dickson takes the time to authenticate your equipment is performing correctly and within specification. You can count on Dickson to verify that it is meeting your intended use.

MODEL	DESCRIPTION	PRICE
N530	WIZARD IQOQ CHECKLIST	\$420
N545	DICKSONONE IQOQ VALIDATION PACKAGE	\$3,995
N560	DICKSONWARE 2.0 IQOQ VALIDATION PACKAGE	\$1,995
EQUIPMENT	STABILITY CHAMBERS, WALK-IN REFRIGERATORS/COOLERS, AND MORE	CALL FOR QUOTE

# INSTALLATION

## HOW DO YOU IMPLEMENT NEW SYSTEMS?

Using Dickson’s installation and implementation service is the quickest and most reliable way to get the job done. By following our four-point plan, our experts will get your system up and running, test the devices to ensure they are working as intended, and stick around to answer any questions. Need help implementing? We’ll work with you to determine and configure best practices based on our experience with your industry.



### TURNKEY

Sit back and we’ll take care of everything.

We install the devices and set up the software on your behalf, and you have the peace of mind in knowing it has all been done right.



### HYBRID

Let us help you with some of the heavy lifting.

Your team installs the units and we help manage the software’s implementation, including alarms, locations, permissions, and more.



### SELF

Install DicksonOne units on your own.

By following along with our installation guide, it should take just a few minutes to set up each device in your system.

DESCRIPTION	PRICE
SYSTEM INSTALLATION AND IMPLEMENTATION	CALL 630.563.4219 FOR OPTIONS AND PRICING

# CALIBRATION

## WHAT DO YOUR AUDITORS REQUIRE?

Using Dickson’s ISO 17025 A2LA accredited calibration laboratory is the best way to ensure that your Dickson instrument is calibrated properly. With over 90 years of experience, we have SOP’s in place to ensure that each unit is calibrated to a precise and accurate specification.



TYPE	INCLUDED DOCUMENTATION	CALIBRATION/ RECALIBRATION
STANDARD	-	-
N100 / N150	1-POINT NIST CALIBRATION AND CERTIFICATE	\$99 / \$156
N300 / N350	3-POINT NIST CALIBRATION AND CERTIFICATE	\$156 / \$209
N400 / N450	3-POINT NIST & A2LA CALIBRATION AND CERTIFICATION	\$269 / \$315
N550	3-POINT NIST CALIBRATION WITH BEFORE DATA CERTIFICATE	\$269
N995	CUSTOM CALIBRATION POINT	\$69

## MEET OUR DIRECTOR OF SERVICES

### ANTOINE NGUYEN

Before coming to Dickson, Antoine spent more than 18 years in validation with companies that answer to FDA audit. With Antoine and his team at the helm, you can feel confident that your job is well cared for.



DICKSON  
930 South Westwood Avenue  
Addison, Illinois 60101-4917

Phone 630.563.4219  
Fax 630.543.0498  
Web [DicksonData.com](http://DicksonData.com)

## WE'RE READY TO TAKE YOUR ORDER!



We want to help! Our product experts are standing by to assist you with your purchase and answer any questions you may have.

**Call to order today: 630.563.4219**

**Need to buy right away or already know what you need? Visit [DicksonData.com](http://DicksonData.com) 24/7 for ordering, technical support, and more.**