

WOOD FINISHING

EQUIPMENT SELECTION GUIDE



Wood Finishing Solutions with Global Manufacturing and R&D

Finishing Brands incorporating the world leading spray finishing Brands of Binks, DeVilbiss and Ransburg manufacture and supply all types of specialised Wood Finishing Equipment and Accessories. With facilities located in Europe, USA, China, Australia, Brazil, Japan, Mexico and India with long established Industrial Distributors serving all Countries around the World.

Selecting the right wood finishing system for the job...

Achieving the perfect finish for the "wood job" starts by matching the spray materials with the correct spray application method and equipment. This wood selection guide intends to provide the end user with the information to make an informed decision by taking into consideration influencing factors such as Finish quality, Spray atomisation technology, Transfer efficiency, Material, Equipment operation. Operator training, Environmental considerations and legislation. The products include an "application indicator" paint container which is colour coded to indicate which Binks, DeVilbiss or Ransburg product should be used with the appropriate spray material. This wood guide also explains in detail the type of atomisation technology to apply the paint material with the best and most efficient process.

For more information visit www.CarlisleFT.eu or contact any of our global operations direct via the contact information on the back page.



Atomising technologies used in wood finishing

Trans-Tech® (Compliant)

This atomisation type was introduced by DeVilbiss in the mid 1990's and is a ground breaking combination of Conventional and HVLP atomisation methods. Trans-Tech utilises more compressed air energy for the atomisation process producing much higher Transfer Efficiency of coating material than the Conventional method. This 'complies' with Global legislation by being able to transfer at least 65% of the sprayed material to the component. Air Cap Pressure is typically 1.3 to 3 BAR (20 to 45 psi). HVLP has mostly been replaced by DeVilbiss Trans-Tech Atomisation in most applications due to its superior finish quality.

HVLP (High Volume Low Pressure)

This "compliant" atomisation method first became important in the 1980's when environmental legislation was first introduced. It uses larger compressed air volumes at lower pressures to atomise the coating. It has a much higher transfer efficiency than Conventional Air Spray. However, the droplet size produced tends to be slightly larger, sometimes resulting in a lower quality finish. HVLP operates at 0.7 BAR (10 psi) at the air cap in compliance with global environmental legislation to provide greater than 65% transfer efficiencies.

Conventional "Air Spray" Atomisation

The most established method of air atomising used on "conventional" spray guns, uses relatively high velocity compressed air to provide good atomisation of the sprayed material. However this process results in low paint transfer efficiencies due to the 'bounce-back' and 'overspray' generated. Compressed air operating pressures used in this process are typically 2 to 4 BAR (30 to 60 psi).

Airless Spray

Airless spraying is a method of spray application that does not directly use compressed air to atomise the paint/coating material, hence the terminology "Airless". Hydraulic fluid pressure is used to atomise the paint by pumping it at high pressures of about 30 to 450 BAR (500 to 6500 psi) through a small orifice spray nozzle (typically tungsten carbide) The resulting spray atomisation is ideal for the very fast application of protective and decorative coatings. Typical applications include corrosion protection of large steel components and structures, and the interior of buildings.

Air Assisted Airless

The paint/coating material is hydraulically forced through a small orifice spray nozzle (tungsten carbide) with a typical fluid pressure of 25 to 120 BAR (400-1800 psi). Final atomisation and fan shaping air is then added by the Binks HVLP/Compliant air cap blending with the fluid stream to produce an exceptionally fine and even spray pattern with very little overspray. This unique combination of Air Assisted Airless/HVLP technologies results in a finely atomise "soft spray" pattern producing a high quality finish that particularly lends itself to finishing wooden products that need an exceptionally fine finish with greatly reduced overspray in compliance with worldwide VOC regulations.



Material and technology compatability

Spray Material

Process

Recommended application equipment (Manual Spray)

Recommended application equipment (Automatic Spray)

Staining



The application of stain enhances the grain structure and equalises the natural colour differences, applying the stain evenly for overall absorption into the substrate wiping off the excess stain with the grain of the timber. Spray application is ideal because of its good penetration rate and quick drying nature of modern stains.

DeVilbiss FLG spray gun (Pressure/Suction/Gravity) with 1.4 mm to 1.8 mm tip and No.5 or No.622 cap. Fine Staining with **DeVilbiss SRi Pro Lite** gun with 1.0/1.2 mm tip with TE5/RS1 cap.

DeVilbiss AG-361 or **AG-362** spray gun 1.0/1.2 mm tip with TE20/TE40 cap OR **Binks AG-363** Air Assisted Airless Auto gun with 0.009" to 0.013" .23 mm to .33 mm tip with **Binks AAA MXL** 32:1 ratio pump.

Basecoat/Sealers/Primers



Provide a stable flat base for topcoats, they are generally high build easy sanding products to fill the grain and minor imperfections in the timber. Primers and Sealers are generally available for pigmented finishes.

DeVilbiss PRi Pro Lite Gravity gun 1.6/1.8 mm tip with **PR10** cap. OR **DeVilbiss Advance HD** spray gun (Pressure/Suction/Gravity feed) with 1.6 to 2.0 mm tip with 510+/522/430/497 air cap. OR **DeVilbiss GFG/JGA Pro** spray guns (Pressure/Suction/Gravity) with 1.6/1.8 mm tip with C1/C2/C3 cap.

DeVilbiss AG-361 or **AG-362** spray gun 1.2 to 1.8 mm tip with TE20/TE30/TE40 cap OR **Binks AG-363** Air Assisted Airless Auto gun with 0.013" to 0.018"/.33 mm to .48 mm tip with **Binks AAA MXL** 32:1 ratio pump.

Pre-catalyst Lacquer (single pack)



A modified cellulose lacquer to provide superior durability. Generally available in clear and pigmented colours.

Binks Air Assisted Airless AA4400M spray gun 0.009" to 0.013" tip (.23 mm to .33 mm) and **MXL 32:1 AAA** pump. OR **DeVilbiss Advance HD** spray gun (Pressure/Suction/Gravity) gun with 1.0/1.2/1.4 mm tip with 510+ 520 or 522 air cap. OR **DeVilbiss GTi Pro Lite** Pressure/Suction/Gravity gun with 1.4 to 1.8 mm tip with TE10/TE20 or TE30 Cap. OR **DeVilbiss GFG/JGA Pro** spray guns (Pressure/Suction/Gravity) with 1.8 mm tip with C1/C2/C3 cap. Patina/Shading with **DeVilbiss SRi Pro Lite** gun with 1.0/1.2 mm tip with HV5/TE5/RS1 cap.

DeVilbiss AG-361 or **AG-362** air spray gun 1.0 to 1.4 mm tip with TE20/TE30/TE40 cap OR **Binks AG-363** Air Assisted Airless Auto gun with 0.009" to 0.013" .23 mm to .33 mm tip with **Binks AAA MXL** 32:1 ratio pump.

Twin Pack (2K) Coatings



A highly durable product with high build characteristics giving a good finish with less multi coat applications. Generally available in clear and pigmented colours including acid catalyst, polyurethane and epoxy high gloss.

Binks Air Assisted Airless AA4400M spray gun 0.009" to 0.013" tip (.23 mm to .33 mm) and **MXL 32:1 AAA** pump. OR **DeVilbiss Advance HD** spray gun (Pressure/Suction/Gravity) gun with 1.0/1.2/1.4 mm tip with 510+ 520 or 522 air cap. OR **DeVilbiss GTi Pro Lite** Pressure/Suction/Gravity gun with 1.4 to 1.8 mm tip with TE10/TE20 or TE30 Cap. OR **DeVilbiss GFG/JGA Pro** spray guns (Pressure/Suction/Gravity) with 1.8 mm tip with C1/C2/C3 cap. Patina/Shading with **DeVilbiss SRi Pro Lite** gun with 1.0/1.2 mm tip with HV5/TE5/RS1 cap.

DeVilbiss AG-361 or **AG-362** spray gun 1.0 to 1.4 mm tip with TE20/TE30/TE40 cap OR **Binks AG-363** Air Assisted Airless Auto gun with 0.009" to 0.015" .23 mm to .38 mm tip with **Binks AAA MXL** 32:1 ratio pump.

UV-Coatings



Ultra Violet curable coatings, cover all types of primers, sealers and top coats, consisting of 100% UV. Water and solvent reduced. UV-coatings are generally applied via automatic systems.

DeVilbiss AG-361 or **AG-362** spray gun 1.0 to 1.4 mm tip with TE20/TE30/TE40 cap OR **Binks AG-363** Air Assisted Airless Auto gun with 0.009" to 0.013" .23 mm to .33 mm tip with **Binks AAA MXL** 32:1 ratio pump.

Exterior High Gloss/Lasure



Typically giving good wood clarity with medium build. Available in clear and fully pigmented colours.

Binks Air Assisted Airless AA4400M spray gun 0.009" to 0.015" tip (.23 mm to .38 mm) and **MXL 32:1 AAA** pump. OR **DeVilbiss Advance HD** spray gun (Pressure/Suction/Gravity) gun with 1.0/1.2/1.4 mm tip with 510+ 520 or 522 air cap.

DeVilbiss AG-361 or **AG-362** air spray gun 1.0 to 1.4 mm tip with TE20/TE30/TE40 cap OR **Binks AG-363** Air Assisted Airless Auto gun with 0.009" to 0.015" .23 mm to .38 mm tip with **Binks AAA MXL** 32:1 ratio pump.

Thanks to Morrells Woodfinishing (UK) for their valuable input to this application data.



The "Mid Sized" market leading lightweight spray gun range

DEVILBISS ADVANCE HD

The all purpose compliant spray gun range.

Best finish with max paint savings

Advance
HD
by DeVILBISS

The comprehensive Advance spray gun range ensures there's a spray gun to suit all types of wood finishing applications. DeVilbiss air caps are manufactured from plated hard brass for a long durable working life.

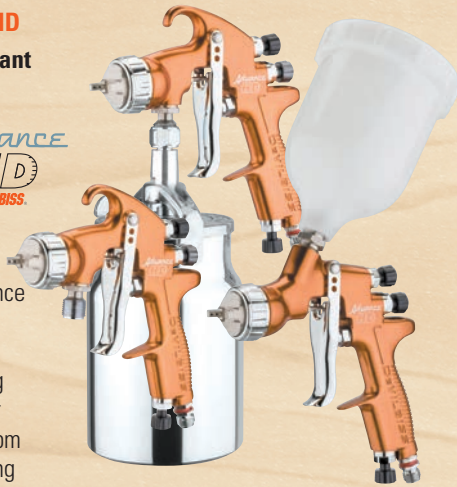
- Robust, lightweight and work friendly design for High Demand outputs
- Balanced air valve design for lighter trigger pull and improved air flow
- Stainless steel tips, needles and fluid passageways as standard
- Wide range of tips and air caps for all wood finishing applications.

Advance HD spray guns kits are packaged as: Pressure gun only, Suction gun with 1 litre cup and Gravity feed kits inc. 568 ml standard gravity cup.

Fluid Tips (mm) 0.85, 1.0, 1.2, 1.3, 1.4, 1.6, 1.8, 2.0 and 2.2

Air Caps 505 HVLP

510+, 513, 520, 522 Trans-Tech/Compliant



DEVILBISS ADVANCE HD PRESSURE ASSIST GRAVITY CUP SYSTEM

For the application of heavy, thixotropic materials with Advance HD gravity guns.

For high viscosity fluids

Advance
HD
by DeVILBISS

Fluid Tips (mm) 1.4, 1.6, 1.8, 2.0 and 2.2

Air Caps 430, 443 Conventional

510+, 513, 520 Trans-Tech/Compliant



VORTEX TIPS

For Advance HD guns.

Also available for staining applications, sizes (mm) 0.85, 1.0, 1.2, 1.4, 1.8



DEVILBISS GTI PRO LITE TRANS-TECH/HVLP

The 'mid size' Compliant spray gun range.

Out-standing atomisation with max paint savings

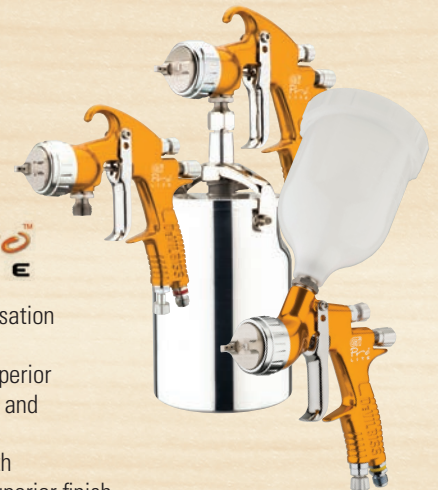
Pro
LITE

- Renowned DeVilbiss atomisation quality
- Fully EPA compliant for Superior material transfer efficiency and significant paint savings
- High Speed application with consistent lay-down and superior finish
- Balanced air valve design for lighter trigger pull and improved air flow
- Tough, corrosion resistant anodised gun body
- Precision high grade ST/ST fluid tips and needles as standard.

Fluid Tips (mm) 1.0, 1.2, 1.3, 1.4, 1.6, 1.8, 2.0

Air Caps HV30 HVLP

TE10, TE20 and TE40 Trans-Tech/Compliant



DEVILBISS ADVANCE HD

The all purpose conventional spray gun range.

Advance
HD
by DeVILBISS

- Wide range of conventional atomisation air caps provide a superior sprayed finish
- Robust, Lightweight and work friendly design for High Demand outputs
- Stainless Steel tips, needles and fluid passageways as standard
- Contoured handle design – Greatly reduces RSi and operator fatigue
- CE marked and fully ATEX approved.

Fluid Tips (mm) 1.0, 1.2, 1.3, 1.4, 1.6, 1.8, 2.0 and 2.2

Air Caps 443, 477, 497 Conventional



DeVilbiss the professionals first choice



DeVilbiss and Binks use the very latest spray technology for the best finish with maximum paint savings

DEVILBISS PRI PRO LITE

The all purpose "full size" Compliant primer/sealer spray gun.



PRI Pro LITE



- Large spray patterns and even material distribution
- Suitable for all types of fillers, sealers, primers, surfacers etc
- Air adjuster valve on the gun handle allows instant pressure control
- Tough and durable drop forged aluminium gun body
- Paint cup includes integral filter and drip-check lid.

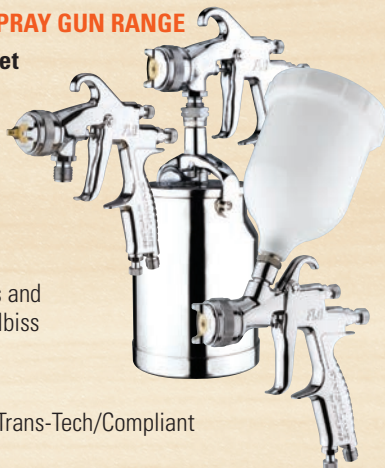
Fluid Tips (mm) 1.4, 1.6, 1.8, 2.0 and 2.5

Air Caps PR10 Trans-Tech/Compliant



DEVILBISS FLG-5 MANUAL SPRAY GUN RANGE

The DeVilbiss FLG-5 the budget line of spray guns.



Ideal for the application of stains and wash coats. FLG-5 employs DeVilbiss Trans-Tech atomisation caps.

Fluid Tips (mm) 1.4, and 1.8

Air Caps No5 and 622 Trans-Tech/Compliant



DEVILBISS JGA & GFG PRO CONVENTIONAL

The 'full size' High Performance Conventional spray gun range.



JGA Pro **GFG Pro**
by DEVILBISS by DEVILBISS



- Renowned DeVilbiss Atomisation Quality
- Genuine fast application rates
- Forged aluminium gun body for long life service
- Light smooth trigger action to reduce operator fatigue
- Balanced air valve design to improve air flow characteristics.

Fluid Tips (mm) 1.0, 1.2, 1.4, 1.6, 1.8

Air Caps C1, C2, C3 Conventional



DEVILBISS SRI PRO LITE

Ideal for patina and shading, a fully functional, small scale touch up spray gun with many practical uses throughout the wood shop.



- HVLP or Trans-Tech compliant air caps
- Sprays Solvent and Water based paints.
- Stainless Steel fluid tips and needles
- Super light trigger pull and precise flow control
- Strong aluminium gun body
- Gun comes with 125cc gravity cup
- Semi-disposable cups are available.

Fluid Tips (mm) 0.6, 0.8, 1.0, 1.2, 1.4

Air Caps HV5 HVLP
TE5, RS1, MC1 Trans-Tech/Compliant



BINKS 10/40 & 60 LITRE PRESSURE FEED TANKS & 2 LITRE PRESSURE CUPS



The Binks range is equipped with easy to operate air regulators, safety pressure relief valves and manual or rotary agitators to provide the best quality fluid agitation.

- Fully ATEX approved and CE marked to the latest pressure equipment directive 97/23/EC
- Constructed from mild steel/zinc plated or stainless steel
- Binks has a higher operating pressure of 7.5bar (110psi) to handle heavier materials
- Range includes Inner Liners to reduce cleaning time and save coating material.



BINKS AA4400M AIR ASSISTED AIRLESS MANUAL SPRAY GUN

The Binks AA4400M air assisted airless spray gun has been designed with the operator and the environment in mind.

The spray fan pattern is adjustable on the gun

BINKS
AA4400M



AA4400M BEST OPERATOR COMFORT BY FAR

The spray gun is available with either HVLP or Trans-Tech[®] air caps operating at lower fluid and air pressures than competitors to achieve an exceptionally fine finish with superior paint savings and lower energy consumption.

- Unique Trans-Tech or HVLP air caps provide a "Softer fine spray"
- Lightweight and operator friendly design with lighter trigger pull tension
- Easy to remove "in-line" needle assembly for quick maintenance
- Adjustable needle packing and "balanced" air valve design
- Solid forged gun body for maximum durability and longer life
- Stainless steel fluid passages with tungsten carbide seats
- Gun handles Solvent and Waterborne coatings as standard
- Weighing just 490 grams - max operating pressure of 303 bar
- Standard flat tips AND Twist tip cleaner available with a wide range of tips from .007" (0.18 mm) to .027" (0.69 mm).



Twist Tip



BINKS AIRLESS SPRAY GUNS

Airless 75

BINKS
AIRLESS 75



- Forged aluminium body for a long working life
- Two-finger trigger with Ergonomic handle to reduce operator fatigue
- Thick-walled stainless steel fluid tube for heavy and abrasive materials
- Unique needle design to keep spring out of the fluid path
- Adjustable needle packing for longer life
- Optional Heat guard (available for tube version).



Market leading paint pumps for wood applications

BINKS MX LITE OUTFITS WITH GUN

The ALL NEW Binks Stainless Steel MXL Pump line equipped with the Binks AA4400M Air Assisted Airless spray gun or A75 Airless spray gun.



BINKS MX Lite



Now with 'Super Flex' hoses



Binks MX Lite outfits have been designed to provide users with a low cost, robust industrial spray outfit, able to apply a wide range of top class wood finishes.

- Five Year pump warranty
- Magnetic detent design (patent) for quick stroke change over with no pulse
- Stainless Steel system – pump and gun
- Low cost spray tip replacement
- Lower cost spares prices
- Large sight glass for visual packing inspection.

MX Lite Packages include:-

Binks MXL Pump – Cart, Wall or Tripod mounted with Gravity feed option.

- Air and Fluid controls
- 25 litre Suction Hose (Cart and Wall)
- 7.5 metre (25') Air (AAA only) and Fluid Hoses
- H.P. Fluid Filter
- Gun mounted Fluid Filter
- AA4400M or A75 (2 trigger) Airless Spray Gun and Tip (Tip size to be specified at time of order).

MX Lite Pump Specification

MXL4/12 Ratio 12:1	
4 litre per min max fluid delivery	Max operating pressure 96 bar
MXL4/32 Ratio 32:1	
4 litre per min max fluid delivery	Max operating pressure 256 bar
MXL12/12 Ratio 12:1	
12 litre per min max fluid delivery	Max operating pressure 96 bar
MXL12/31 Ratio 31:1	
12 litre per min max fluid delivery	Max operating pressure 248 bar



BINKS DX70 – 1:1 RATIO DIAPHRAGM PUMPS & OUTFITS

The DX70 is an air operated 1:1 ratio Diaphragm Pump and is the perfect alternative to pressure feed tanks providing easy fluid feed to one or two spray guns with quick and easy cleaning.

BINKS DX70



- Built-in Fluid Regulator for precise fluid control.

The DX70 range features bare pumps, assembled pump packages and complete "ready to spray" outfits matched with the renowned DeVilbiss Advance HD or FLG5 spray guns. Choice of cart, wall, pail or tripod mounted with gravity feed option, and outfits with air regulators provide independent control of pump and spray gun pressures, with no expensive pressure test certification regulations.



DX70 ready assembled spray outfits including spray gun part no's

DX70R3-TF-FLG5 Tripod mounted pump outfit with FLG5 gun
DX70R3-CF-FLG5 Cart mounted pump outfit with FLG5 gun
DX70R3-TF-ADV Tripod mounted pump outfit with Advance TT gun
DX70R3-CF-ADV Cart mounted pump outfit with Advance TT gun



BINKS DX200 – 1:1 RATIO DIAPHRAGM PUMPS

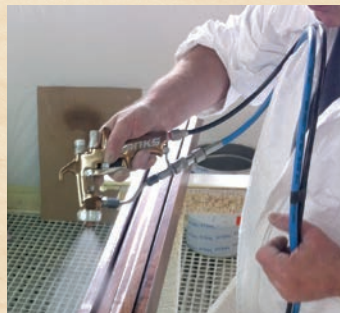
The DX200 is a high flow rate air operated 1:1 ratio Double Diaphragm Pump specifically developed for the direct supply of paints and materials to spray guns.



BINKS DX200

The DX200 range features bare pumps and a choice of outfit. DX200 is self priming and perfect for use with ALL TYPES of spray gun technologies.

- Built-in Fluid Regulator for precise fluid control
- Rugged Construction & Universal Material Compatibility
- Non-Stall & Quiet Running
- Extended Service Life & Zero Leakage
- Consistent Fluid Delivery
- For multi-spray gun applications
- Pumps Shear-Sensitive Materials
- Fast & Easy Servicing.



The Universal all encompassing auto spray gun line up from DeVilbiss/Binks

DEVILBISS AG-361 & AG-362 AUTOMATIC SPRAY GUNS (LOW PRESSURE)

Wide range of HVLP/Trans-Tech and Conventional Air Caps provide the best Atomisation. Stainless steel tips/needles and fluid passageways for water and solvent based materials.

- Wide range of Trans-Tech (Compliant/HVLP) and Conventional Air Caps provide the best performance on ALL applications
- Removable ST ST Spray Head for fast and easy maintenance
- Control of Spray Performance and fluid flow is unequalled with the Fluid Adjusting Knob (18 indexing positions)
- Stainless Steel – For waterborne and solvent based materials
- Independent Fan, Atomising and Triggering Air – Vital for Robotic and Machine applications
- Indexing Air Cap for consistent reproduction of spray pattern.



AG-362 – also features a fast and easy removal system to remove the gun from the mounting block, providing quick and easy replacement or maintenance with minimum production downtime.

Fluid Tips (mm) 1.0, 1.2, 1.4, 1.6, 1.8, 2.0 and 2.2
Air Caps HV30 HVLP
 TE10, TE20, TE30, TE40, TE50 Trans-Tech/Compliant
 C1, C2, C3 Conventional



BINKS AG-363 AIR ASSISTED AIRLESS HVLP AUTOMATIC SPRAY GUN

The best atomisation and paint savings.



Binks AG-363 is ideally suited for multi-gun finishing equipment such as rotary machines, reciprocators, robots, fixed and chain-on-edge type systems located in medium to high production environments. The unique tip and air cap design of the Binks AG-363 Automatic Air Assisted Airless HVLP spray gun uses lower fluid and air pressure than competitors guns to achieve exceptionally fine finishes with superior paint savings and lower energy consumption.

- “Quick detach” head from base for reduced downtime
- Air cap has optional 15° indexing for precision finishing
- Adjustable “on gun” fan pattern controls
- St St gun head and fluid passages with fluid filter in gun head
- Manual or remote gun controls
- Tungsten carbide needle and seat
- Paint re-circ option in head or base plate
- Wide range of tips from .007” (0.18 mm) to 0.27” (0.69 mm).



BINKS PNEUMATIC ELEVATOR

The new Binks elevators are driven by an easy to operate pneumatic actuator, enabling the changing of drums with a minimum of inconvenience. Both models feature an anti-twist mechanism, sturdy construction and are designed for use with both solvent-based and waterborne materials.

- Simple compressed air operation
- Speed control possible in both directions
- Elevator can be set at any height within its stroke and will not drop from that point
- ATEX approved & marked for use in Zones 1 and 2



BINKS IN-LINE FLUID REGULATORS

Binks fluid regulators can be used with diaphragm pumps, pressure feed tanks or any type of paint circulating system to accurately control paint/material flow.



- Regulator body design reduces paint wastage during maintenance
- Fluid passages in 303 Stainless Steel as standard
- Compatible with solvent and waterborne paints and materials
- Manual and Automatic types.



Specification

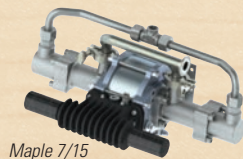
Part Number	Binks 25L Elevator 104153	Binks 205L Elevator 104112
Max working air pressure	7 Bar (101 psi)	7 Bar (101 psi)
Air Inlet	1/4" BSP female	1/4" BSP female
Stroke	500mm / 19.7"	955mm / 37.6"
Maximum Drum Size	Ø340mm	Ø640mm
Unit height (fully extended)	1380mm / 54"	2270mm / 89"
Weight	45.5Kg / 100lbs	64Kg / 140lbs



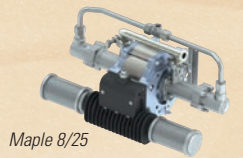
Wood finish fluid handling products

BINKS MAPLE AIR DRIVEN PAINT PUMPS 15/3 (3:1 RATIO), 7/15 (15:1 RATIO) AND 8/25 (25:1 RATIO)

Air operated horizontal piston pumps for supplying solvent and waterborne paints and other suitable materials.



Maple 7/15



Maple 8/25



Maple 15/3

- Low Ice – lubricant free Air Motor with quick exhaust technology (Patent) removes the risk of air valve icing
- Bellows seals – no exposed shaft seals eliminating the need for maintenance and lubrication of the shaft packing
- Stainless steel fluid sections – ideal for waterborne, solvent based and UV materials
- Tungsten carbide ball seats and Ceramic-Coated pistons ensure maximum operating life
- Equal thrust on each stroke – produces smooth and surge free even paint flow.



BINKS GEMS - 2K ELECTRONIC MIXING SOLUTIONS

GEMS is the easy to operate 2K mixing solution that audits your paint resin and solvent usage while helping to reduce your solvent waste for up to 5 colours and 2 spray guns.

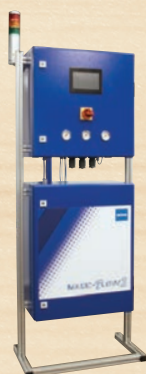
- Operator Friendly Colour Screen
- Gather Auditing & Reporting Data
- Programmable Flush To Reduce Wastage
- Accurate Proportioning 1:1 up to 100:1
- Single or Multi-Colour



BINKS MAGIC FLOW 2

Magic-Flow 2 is a versatile and flexible mixing solution designed to accommodate many low pressure or high pressure applications. It supports a range of optional, functionality-enhancing modules to provide 2, 3 or 4K component mixing of a maximum of 29 colours with up to 4 spray guns.

- Operator Friendly 7" Colour Touch Screen
- Low or High Pressure mixing from 0.5:1 up to 50:1
- Suitable for Solvent and Water based Paints up to 29 Colours
- Programmable Recipes' & Flush Sequences
- Essential Reporting Data including VOC Calculation



BINKS MX AIRLESS & AAA HIGH PRESSURE PAINT PUMPS



BINKS MX



Binks MX Pumps are a completely new design in pump technology using patented magnetic detents to dramatically enhance smooth pump operation and change-over with no pulse to provide the best "surge-free" paint delivery for the perfect finish. These MX pumps operate at 36,42,60 & 70:1 ratio for paint supply to Air Assisted Airless and Airless spray guns for medium to high production. Available as a bare pump and also as fully assembled wall and cart mounted outfits.

MX Cart and Wall outfits include a ST.ST fluid filter, air filter/regulator controls and 25l suction wand as standard

- Carbon or Stainless Steel wetted parts with Ceramic-Coated piston rod for extended working life cycle
- Quiet Operation, No Ice, Air Motor is also lubricant free
- 5 Year pump warranty on materials and workmanship
- Anti-Stall Magnetic detents (patent) with quick exhaust valves for fast stroke change over with virtually no pulse
- Self adjusting spring loaded packings with large lubricant cup for reduced down time
- Quick disconnect fluid section from air motor for easy servicing
- CE marked and fully ATEX approved.

MX Pump Specification

MX35/36 Ratio 36:1	6.6 l/m @ 30 cycles (intermittent)	Max Operating Pressure 288 bar
MX30/42 Ratio 42:1	5.7 l/m @ 30 cycles (intermittent)	Max Operating Pressure 294 bar
MX35/60 Ratio 60:1	6.6 l/m @ 30 cycles (intermittent)	Max Operating Pressure 480 bar
MX30/70 Ratio 70:1	5.7 l/m @ 30 cycles (intermittent)	Max Operating Pressure 490 bar



RANSBURG AQUAPACK SYSTEMS

Provides the total solution for waterborne materials in low and high pressure options.

- Handles most waterborne materials
- Low and high pressure outfits available
- Easy to operate and safe
- Completely assembled, tested and ready for use
- Mobile and easy to clean
- CE approved



Electrostatic applicators

RANSBURG MANUAL & AUTOMATIC ELECTROSTATIC SPRAY GUNS

Ransburg Electrostatic spray guns introduce a high voltage charge into the spray pattern which in turn adds the electrostatic charge into the atomised paint particles. The work-piece then "attracts" the atomised paint/material onto the component with excellent "wrap" characteristics around the back of the workpiece. Providing very good deposition rates with high transfer efficiency, resulting in greatly reduced paint usage compared to conventional methods in full compliance with worldwide VOC regulations.

The Electrostatic technique can be applied to Air Spray, HVLP/Compliant and Air Assisted Airless atomisation spray systems including solvent and waterborne materials.



Wood finishing accessories

BINKS DISPOSABLE SPRAYBOOTH FILTER PAPER

Spray booth filter paper

Part no.	Size
207229	H 90 x L 924 cm (36" x 30')
207900	H 75 x L 1,346 cm (30" x 44')
207901	H 90 x L 1,115 cm (36" x 36')
207902	H 100 x L 1,038 cm (39" x 34')

Super efficiency spray booth filter paper

Part no.	Size
207229SE	H 90 x L 640 cm (36" x 21')
207902SE	H 100 x L 823 cm (39" x 27')



DEVILBISS & BINKS AIR AND FLUID HOSES (LOW PRESSURE)



Part No.	Type	Bore
H-7501	5/16" bore air hose red rubber	5/16" (8mm)
H-7502	3/8" bore air hose red rubber	3/8" (9.5mm)
H-7503	1/4" bore fluid hose black	1/4" (6mm)
H-7504	3/8" bore fluid hose black	3/8" (9.5mm)

Connector thread size and type

1/4" BSP	1/4" NPS	3/8" BSP	3/8" NPS
PA-HC-4527	P-HC-4527	—	—
PA-HC-4528	P-HC-4528	PA-HC-4548	P-HC-4548
PA-HC-4523	P-HC-4523	PA-HC-4543	P-HC-4543
PA-HC-4528	P-HC-4528	PA-HC-4548	P-HC-4548

DEVILBISS AIR FILTER REGULATORS

Filter Regulator - FLFR-1

- Air filtration down to 20 microns
- Air flow of 70cfm (at 7 bar – 100 psi inlet pressure)



Filter Regulator Coalescer - FLRC-1

- Compact, low cost single operator Filter Regulator and Coalescer
- Filtration down to 0.01 microns suitable for Air Mask or Visor



FLCF-1 Coalescing Filter

- A 3/8" (port size) coalescing (fine oil) filter
- Air filtration down to 0.01 microns (suitable for breathing Air-Fed Visors/Masks)
- Replaceable filter element
- Maximum working pressure 18 bar (260 psi).



Super lightweight and greater flexibility for better operator comfort.



BINKS HIGH PRESSURE TWIN HOSE ASSEMBLIES

Part No	Description	Max Working Pressure
H-7507-75-SF	Twin SuperFlex Hose Assembly 7.5m with 3/16" bore air and fluid lines with 1/4" NPS Connectors	270 bar
H-7507-150-SF	Twin SuperFlex Hose Assembly 15m with 3/16" bore air and fluid lines with 1/4" NPS Connectors	270 bar
H-7507-75	Twin Hose Assembly 7.5m with 1/8" bore air and fluid lines with 1/4" NPS Connectors	256 bar
H-7507-150	Twin Hose Assembly 15m with 1/8" bore air and fluid lines with 1/4" NPS Connectors	256 bar



Super-Flex Hose

Wide range of accessories...

DEVILBISS PRO VISOR AIR FED RESPIRATOR

The DeVilbiss purpose made air fed respirator for all spray operators.

The DeVilbiss Pro Visor air fed respiratory protection system has been purpose designed for use by sprayers.

- Purpose designed to provide best possible protection for all kinds of spray painting applications
- The most comfortable and lightweight air fed visor outfit
- Fully adjustable head band for best operator comfort
- Removable peak reduces spray booth light glare

- Lightweight, Ergonomic waist belt design allows right or left side use
- Wider peripheral view for excellent visibility
- Audible warning device – alerts operator to low air pressure.

Typical Applications

- DeVilbiss Pro Visor is recommended for all spray operators.

Part No.	Description
PROV-600	Complete visor, waist belt and hose outfit
PROV-22-K10	Peel off visors pack of 10
PROV-22-K50	Peel off visors pock of 50



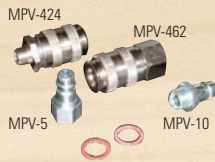
In-Line Air Adjusting Valve
Part No. HAV-501-B



DGi Pro Digital Air Pressure Adjuster
Part No. DGiPro-502-BAR



Quick Detach Fittings
Part No.



Cup Filters
Part No. KGP-5-K5



Gravity Cups
Part No's.



Suction Cup Lid Gaskets
Part No. KR-11-K3



Mixing Cups
Part No. MC-1-K50



Suction Cup Filters
Part No. KR-484-K10



Drip-Free Diaphragms
Part No. KR-115-K5



DeVilbiss "UNi" Swivel Fitting (Low Pressure)
Part No. MPV-60-K3



Gun Cleaning Brushes
Part No. 4900-5-1-K3



Suction Cup
Part No. KR-566-1-B



Air Blow Gun
Part No. DGD-505-E



Devilbiss Gun Mounted Paint Filters
Part No. VSA-512



Viscosity Cups
Part No. 7000-114-K2



Professional Spray Gun Cleaning Kit
Part No. KK-4584



Binks Disposable Pressure Tank Liners
Part No. PT-78-K10



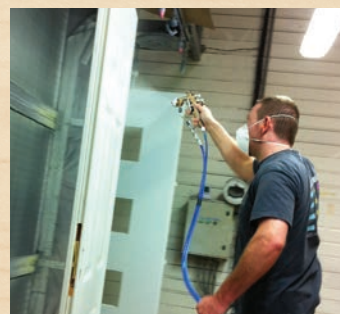
Spot Pots
Part No. KR-110-K3



Wood Master Training

Finishing Brands conducts regular training courses throughout the year in our fully equipped industrial training centres in the UK, France and Germany.

The "modular" training courses cover all aspects and technologies used in the field of Industrial Spray Finishing. Delegates are able to gain valuable "hands-on" and "theoretical" experience with the advanced range of finishing products available from Finishing Brands, featuring the world renowned brands of Binks, DeVilbiss and Ransburg. Training is also provided on the industry specific Health & Safety and statutory (ATEX/CE) requirements necessary in the demanding spray industry.



Wood Finishing Solutions with Global Manufacturing and R&D

Finishing Brands incorporating the world leading spray finishing Brands of Binks, DeVilbiss and Ransburg manufacture and supply all types of specialised Wood Finishing Equipment and Accessories. With facilities located in Europe, USA, China, Australia, Brazil, Japan, Mexico and India with long established Industrial Distributors serving all Countries around the World.



Selecting the right wood finishing system for the job...

Achieving the perfect finish for the “wood job” starts by matching the spray materials with the correct spray application method and equipment. This wood selection guide intends to provide the end user with the information to make an informed decision by taking into consideration influencing factors such as Finish quality, Spray atomisation technology, Transfer efficiency, Material, Equipment operation. Operator training, Environmental considerations and legislation. The products include an “application indicator” paint container which is colour coded to indicate which Binks, DeVilbiss or Ransburg product should be used with the appropriate spray material. This wood guide also explains in detail the type of atomisation technology to apply the paint material with the best and most efficient process.

For more information visit www.CarlisleFT.eu.



Sales and Service through our Global Network of Distributors

Carlisle Fluid Technologies Locations

Americas: **USA ■ Mexico ■ Brazil**

Europe/Asia/Africa: **United Kingdom ■ France ■ Germany ■ Switzerland ■ India**

Pacific Rim: **China ■ Japan ■ Australia**

www.CarlisleFT.com

